

Create This Elegant Friend Card with the Memorable Blooms Bundle

Mary Fish
maryfish@stampinpretty.com
<http://stampinpretty.com>



1. measure & cut:

card base:

- Basic White Thick Cardstock: 4 1/4 x 11, scored at 5 1/2

layers (from bottom to top): *size before die-cutting

- Night of Navy Cardstock: 4 1/4 x 4 1/4
- Boho Blue Cardstock: 4 x 4
- Basic White Cardstock: 3 3/4 x 3 3/4
- Night of Navy Cardstock*: 3 1/2 x 3 1/2
- Wild Wheat Cardstock*: 3 1/2 x 3 1/2
- Basic White Cardstock*: 3 x 3

envelope flap:

- Timeless Plaid Designer Series Paper: 5 3/4 x 2 1/2

Create This Elegant Friend Card with the Memorable Blooms Bundle

Mary Fish
maryfish@stampinpretty.com
<http://stampinpretty.com>



2. stamp & color:

- Use a [Mini MISTI](#) stamp tool to position and stamp the sentiment & flowers (Memorable Blooms Stamp Set) in Night of Navy Classic Ink onto the Basic White 3 x 3 layer.
- Color the floral image with Wild Wheat and Boho Blue Light & Dark Stampin' Blends.

3. crop & emboss:

- Tuck the larger Basic White layer inside the Forever Plaid 3D Embossing folder and zip through a [Stampin' Cut & Emboss Machine](#) (Standard).
- Crop the Night of Navy cardstock with a [Stampin' Cut & Emboss Machine](#) (Standard) and one octagon die nested inside the other. **TIP:** Keep in place with Post-It Note tape.
- Repeat the last step with the Wild Wheat cardstock. Rotate the inside die 180 degrees (the floral die-cuts will be on the opposite side) and zip through the die-cut again to create the frame.
- Closely snip the sentiment out and in half as shown.
- Crop the stamped floral image with a [Stampin' Cut & Emboss Machine](#) (Standard or Mini) and the coordinating Memorable Blooms dies.

Create This Elegant Friend Card with the Memorable Blooms Bundle

Mary Fish
maryfish@stampinpretty.com
<http://stampinpretty.com>



4. assemble & adhere:

- Layer and adhere the Night of Navy, Boho Blue and embossed layers together and to the card base with Multipurpose Liquid Glue.
- Adhere the Wild Wheat die-cut frame over the top of the Night of Navy die-cut as shown with Multipurpose Liquid Glue.
- Use Paper Snips to cut strips of Stampin' Dimensional from the edge of the Stampin' Dimensionals sheet. Adhere to the bottom of the frame and then to the card.
- Adhere the sentiment and flower die-cut as shown with Mini Stampin' Dimensionals.

5. embellish:

- Add three Night of Navy Ombre Matte Decorative Dots.

6. envelope:

- Adhere the 5 3/4 x 2 1/2 Designer Series Paper to a Basic White Medium envelope flap with Multipurpose Liquid Glue. Tip: Add glue to the flap, not the Designer Series Paper.

Create This Elegant Friend Card with the Memorable Blooms Bundle

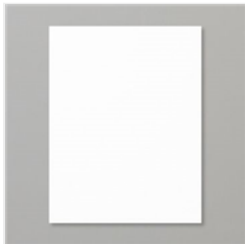
Mary Fish
maryfish@stampinpretty.com
<http://stampinpretty.com>

learn more:

- Not sure what Stampin' Blends are? Check out my Stampin' Blends resource page [here](#).
- Watch ALL my [1 Minute to WOW Video Tutorials](#) for quick paper crafting tips [here](#).

[CLICK FOR BLOG POST](#)

[CLICK TO SHOP](#)



[Basic White 8-1/2\" data-bbox="72 408 222 481"/>](#)

Price: \$11.25



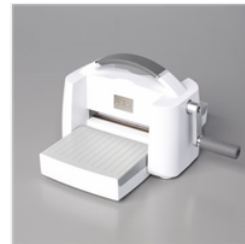
[Basic White 8-1/2\" data-bbox="247 408 398 462"/>](#)

Price: \$13.00



[Basic White\" data-bbox="420 408 577 462"/>](#)

Price: \$11.00



[Stampin' Cut &\" data-bbox="597 408 752 462"/>](#)

Price: \$130.00



[Paper Trimmer -\" data-bbox="781 408 929 443"/>](#)

Price: \$28.00



[Multipurpose\" data-bbox="94 641 201 694"/>](#)

Price: \$6.00



[Stampin'\" data-bbox="261 641 384 694"/>](#)

Price: \$4.25



[Mini Glue Dots -\" data-bbox="432 641 566 675"/>](#)

Price: \$7.25