

A Handmade Hello Card with Stampin' Up! Everyday Skies

Mary Fish
maryfish@stampinpretty.com
<http://stampinpretty.com>



1. measure & cut:

card base:

- Basic White Thick cardstock: 4 1/4 x 11, scored at 5 1/2

layers (from bottom to top):

- Everyday Skies Designer Series Paper: 4 x 5 1/4
- Night of Navy cardstock: 3 3/4 x 3
- Basic White cardstock: 4 x 5
- Everyday Skies Designer Series Paper: 3 1/2 x 4 1/2
- Everyday Skies Designer Series Paper: 3 1/2 x 1 1/4 and 3 x 3/4
- Basic White cardstock (sentiment): 3 x 1 1/2

envelope flap:

- Everyday Skies Designer Series Paper: 5 3/4 x 2 1/2

A Handmade Hello Card with Stampin' Up! Everyday Skies

Mary Fish
maryfish@stampinpretty.com
<http://stampinpretty.com>



2. stamp:

- Use a [Mini MISTI](#) stamp tool to position and stamp the sentiment (Everyday Arches Stamp Set) in Night of Navy Classic Ink onto the Basic White sentiment layer.

3. crop:

- Crop the sentiment with a [Stampin' Cut & Emboss Machine](#) (Standard) and the smallest (2 1/4 x 1) Everyday Arches die.
- Crop the Designer Series Paper and Basic White layers with the 3rd (4 1/4 x 3) and 4th (4 1/2 x 3 1/4) largest Everyday Arches dies.

4. assemble & adhere:

- Adhere the largest Designer Series Paper layer, Basic White & Designer Series Paper arches with Multipurpose Liquid Glue.
- Adhere all remaining pieces with Stampin' Dimensionals.

5. embellish:

- Wrap the two small pieces of Designer Series Paper with Night of Navy Natural Tones Linen Thread, securing with a bow on the left.
- Add three Two-Tone Sparkle Gems as shown.

6. envelope:

- Adhere the 5 3/4 x 2 1/2 Designer Series Paper to a Basic White Medium envelope flap with Multipurpose Liquid Glue. Flip to the inside of the flap and carefully snip away the excess with Paper Snips.

A Handmade Hello Card with Stampin' Up! Everyday Skies

Mary Fish
maryfish@stampinpretty.com
<http://stampinpretty.com>

learn more:

- Want to learn the art to layering sentiments like on this handmade hello card? Watch my 1 Minute to WOW! Video Tutorial [here!](#)
- Watch ALL my [1 Minute to WOW Video Tutorials](#) for quick paper crafting tips [here](#).

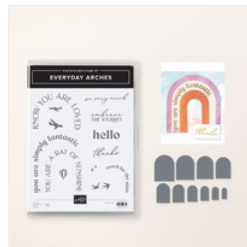
[CLICK FOR BLOG POST](#)

[CLICK TO SHOP](#)



[Everyday Skies Suite Collection \(English\) - 164635](#)

Price: \$76.50



[Everyday Arches Bundle \(English\) - 164630](#)

Price: \$45.00



[Everyday Arches Photopolymer Stamp Set \(English\) - 164623](#)

Price: \$21.00



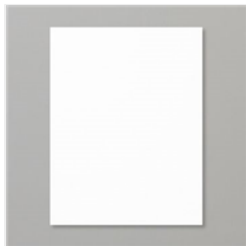
[Everyday Arches Dies - 164629](#)

Price: \$29.00



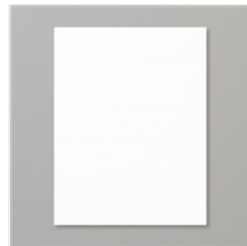
[Everyday Skies 6" X 6" \(15.2 X 15.2 Cm\) Designer Series Paper - 164622](#)

Price: \$12.50



[Basic White 8-1/2" X 11" Thick Cardstock - 159229](#)

Price: \$11.25



[Basic White 8-1/2" X 11" Cardstock - 159276](#)

Price: \$13.00



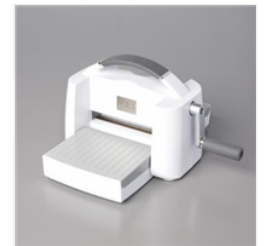
[Night Of Navy 8-1/2" X 11" Cardstock - 100867](#)

Price: \$11.50



[Basic White Medium Envelopes - 159236](#)

Price: \$11.00



[Stampin' Cut & Emboss Machine - 149653](#)

Price: \$130.00

A Handmade Hello Card with Stampin' Up! Everyday Skies

Mary Fish
maryfish@stampinpretty.com
<http://stampinpretty.com>



[Paper Trimmer -
152392](#)

Price: \$28.00



[Multipurpose
Liquid Glue -
110755](#)

Price: \$6.00



[Stampin'
Dimensionals -
104430](#)

Price: \$4.25



[Mini Glue Dots -
103683](#)

Price: \$7.25



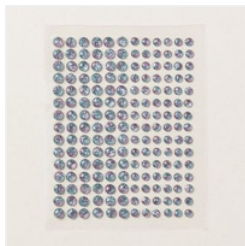
[Night Of Navy
Classic Stampin'
Pad - 147110](#)

Price: \$9.00



[Natural Tones
Linen Thread -
164071](#)

Price: \$9.00



[Two-Tone Sparkle
Gems - 164633](#)

Price: \$9.50