

A Handcrafted Valentine's Card with Stampin' Up! Pick a Season!

Mary Fish
maryfish@stampinpretty.com
<http://stampinpretty.com>


stampin' pretty
step-by-step tutorial



1. measure & cut:

card base:

- Basic White Thick Cardstock: 4 1/4 x 11, scored at 5 1/2

layers (from bottom to top):

- Basic White Cardstock: 3 3/4 x 5
- Real Red Cardstock: 3 x 4 1/2
- Granny Apple Green Cardstock: 2 3/4 x 4 1/2
- Basic White Cardstock: 2 3/4 x 4 1/4
- Real Red Cardstock: 2 3/4 x 1 1/4

envelope flap:

- Fruit Salad Designer Series Paper: 5 3/4 x 2 1/4

A Handcrafted Valentine's Card with Stampin' Up! Pick a Season!

Mary Fish
maryfish@stampinpretty.com
<http://stampinpretty.com>



2. stamp:

- Use a [Mini MISTI](#) stamp tool to position and stamp the sentiment (Hugs for Love Stamp Set) in Versamark Ink onto the smallest Real Red Cardstock.
- Cover with white Basics WOW! Embossing Powder. Tap to remove the excess and set with a Heat Tool.
- Use a [Mini MISTI](#) stamp tool to position and stamp the tree leaves and trunk (Pick a Season Stamp Set) in Granny Apple Green and Pecan Pie Classic Ink onto the Basic White 2 3/4 x 4 1/4 piece.

3. crop:

- Crop the sentiment with a [Stampin' Cut & Emboss Machine](#) (Standard or Mini) and the Delicate Forest Label die.

4. assemble & adhere:

- Adhere the Real Red layer to the Basic White layer with Multipurpose Liquid Glue.
- Wrap the stamped Basic White layer with Real Red & White Baker's Twine, securing with a bow.
- Adhere the remaining layers together as shown with Stampin' Dimensionals.

5. embellish:

- Add two Cherry Cobbler Adhesive-Backed Berries to the sentiment.

6. envelope:

- Adhere the 5 3/4 x 2 1/2 Designer Series Paper to a Basic White Medium envelope flap with Multipurpose Liquid Glue. **TIP:** Add Glue to the flap, not the Designer Series Paper.

A Handcrafted Valentine's Card with Stampin' Up! Pick a Season!

Mary Fish
maryfish@stampinpretty.com
<http://stampinpretty.com>

learn more:

- Watch my [1 Minute to WOW! Video Tutorial](#) sharing my favorite tips for Heat Embossing, used on this Handcrafted Valentine's Card, [here](#).
- Watch ALL my [1 Minute to WOW Video Tutorials](#) for quick paper crafting tips [here](#).

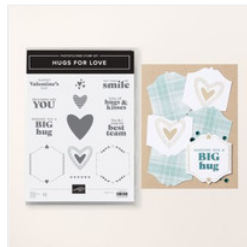
[CLICK FOR BLOG POST](#)

[CLICK TO SHOP](#)



[Pick A Season Photopolymer Stamp Set - 164969](#)

Price: \$0.00



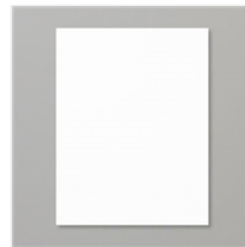
[Hugs For Love Stamp Set \(English\) - 164559](#)

Price: \$20.00



[Basic White 8-1/2" X 11" Thick Cardstock - 159229](#)

Price: \$11.25



[Basic White 8-1/2" X 11" Cardstock - 159276](#)

Price: \$13.00



[Real Red 8-1/2" X 11" Cardstock - 102482](#)

Price: \$11.50



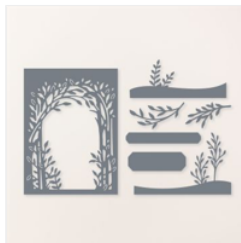
[Granny Apple Green 8-1/2" X 11" Cardstock - 146990](#)

Price: \$11.50



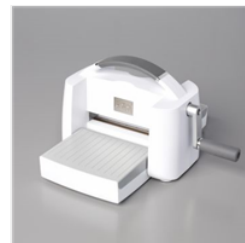
[Fruit Salad 6" X 6" \(15.2 X 15.2 Cm\) Designer Series Paper - 164943](#)

Price: \$0.00



[Delicate Forest Dies - 162679](#)

Price: \$38.00



[Stampin' Cut & Emboss Machine - 149653](#)

Price: \$130.00



[Paper Trimmer - 152392](#)

Price: \$28.00

A Handcrafted Valentine's Card with Stampin' Up! Pick a Season!

Mary Fish

maryfish@stampinpretty.com

<http://stampinpretty.com>



[Multipurpose
Liquid Glue -
110755](#)

Price: \$6.00



[Basic White
Medium Envelopes
- 159236](#)

Price: \$11.00



[Stampin'
Dimensionals -
104430](#)

Price: \$4.25



[Real Red Classic
Stampin' Pad -
147084](#)

Price: \$9.00



[Granny Apple
Green Classic
Stampin' Pad -
147095](#)

Price: \$9.00



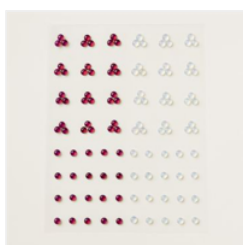
[Pecan Pie Classic
Stampin' Pad -
161665](#)

Price: \$9.00



[Real Red & White
Baker's Twine -
164051](#)

Price: \$5.00



[Cherry Cobbler &
Pearl Adhesive-
Backed Berries -
164119](#)

Price: \$9.00



[VersaMark Pad -
102283](#)

Price: \$9.50



[Embossing
Additions Tool Kit -
159971](#)

Price: \$27.00



[Heat Tool - 129053](#)

Price: \$32.00



[Basics Wow!
Embossing
Powder - 165679](#)

Price: \$21.00