

# Sweet Days of Autumn Card

Mary Fish  
[maryfish@stampinpretty.com](mailto:maryfish@stampinpretty.com)  
<http://stampinpretty.com>



## how to cut your card stock:

### card base:

- Thick Basic White card stock - 4 ¼ x 11, scored at 5 ½ (top)

### layers & card stock:

- Early Espresso card stock - 4 x 5 ¼
- Sweet Days of Autumn DSP grid pattern - 1 x 5
- Sweet Days of Autumn DSP critter pattern 3 x 5
- Basic White sentiment 3 ½ x 2 ½

### snipped envelope flap:

- Sweet Days of Autumn Designer Series Paper: - 5 ¾ x 2 ¼.

# Sweet Days of Autumn Card

Mary Fish

[maryfish@stampinpretty.com](mailto:maryfish@stampinpretty.com)

<http://stampinpretty.com>



## 2. stamp:

- Use a [Mini MISTI](#) stamp tool to position and stamp the sentiment (Autumn to Remember stamp set) in Copper Clay Classic Ink onto the Basic White layer.

## 3. crop:

- Crop the sentiment with a [Stampin' Cut & Emboss Machine](#) (Standard or Mini) and the coordinating die from Autumn Expressions Dies .

## 4. assemble & adhere:

- Burnish the fold of the card base with a Bone Folder.
- Assemble and adhere layers with MultiPurpose Liquid glue as shown.
- Wrap Early Espresso and DSP layers with Copper Clay twine (Natural Tones Linen Thread) and tie in a bow.
- Add Stampin' Dimensionals to adhere sentiment and Early Espresso layer

## 5. embellish:

- Embellish as shown with 3 Cajun Craze Faux Glass Dots

## 6. envelope:

- Adhere the 5 3/4 x 2 1/4 Designer Series Paper to a Basic White Medium envelope flap with Multipurpose Liquid Glue. Flip to the inside of the flap and carefully snip away the excess with Paper Snips.
- **TIP:** I intentionally left a border of white showing at the top of the flap to mimic the white border on the card..

# Sweet Days of Autumn Card

Mary Fish

[maryfish@stampinpretty.com](mailto:maryfish@stampinpretty.com)

<http://stampinpretty.com>

## learn more:

- Watch my [1 Minute to WOW Video Tutorial](#) for tips on adding dsp to the envelope flap of my sweet days of autumn card [here](#).
- Watch ALL my [1 Minute to WOW Video Tutorials](#) for quick paper crafting tips [here](#).

[CLICK FOR BLOG POST](#)

[CLICK TO SHOP](#)



[Autumn To Remember Photopolymer Stamp Set \(English\) - 166500](#)

Price: \$24.00



[Autumn Expressions Dies - 164055](#)

Price: \$32.00



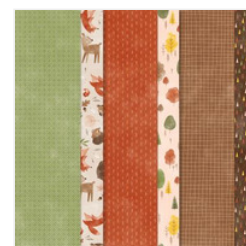
[Basic White 8-1/2 X 11 Cardstock - 159276](#)

Price: \$13.00



[Early Espresso 8-1/2 X 11 Cardstock - 119686](#)

Price: \$11.50



[Sweet Days Of Autumn 12" X 12" \(30.5 X 30.5 Cm\) Designer Series Paper - 166498](#)

Price: \$12.50



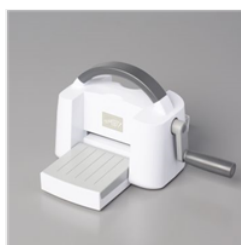
[Copper Clay Classic Stampin' Pad - 161647](#)

Price: \$9.00



[Stampin' Cut & Emboss Machine - 149653](#)

Price: \$130.00



[Mini Stampin' Cut & Emboss Machine - 150673](#)

Price: \$66.00



[Bone Folder - 102300](#)

Price: \$8.00



[Multipurpose Liquid Glue - 110755](#)

Price: \$6.00

# Sweet Days of Autumn Card

Mary Fish  
[maryfish@stampinpretty.com](mailto:maryfish@stampinpretty.com)  
<http://stampinpretty.com>



[Stampin' Dimensionals - 104430](#)

Price: \$4.25



[Mini Glue Dots - 103683](#)

Price: \$7.25



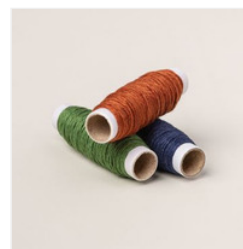
[Basic White Medium Envelopes - 159236](#)

Price: \$11.00



[Paper Snips Scissors - 103579](#)

Price: \$12.00



[Natural Tones Linen Thread - 164071](#)

Price: \$9.00



[Faux Glass Dots - 164060](#)

Price: \$8.50