

Make a Simple Country Woods Friend Card

Mary Fish
maryfish@stampinpretty.com
<http://stampinpretty.com>



how to cut your card stock:

portrait card base:

- Night of Navy card stock – 4 ¼ x 11, scored at 5 ½ (top)

layers & card stock:

- Crumb Cake card stock – 4 x 5 ¼
- Basic White card stock – 3 ¾ x 5
- Cut Country Woods DSP into ½" strips in random lengths from 3 ½ to 4 ¾
- Sentiment - 1 ¾ x ¾
- Misty Moonlight, Night of Navy, Petal Pink and Basic White card stock - scraps for flowers

snipped envelope flap:

- Designer Series Paper: – 5 ¾ x 2 ½

Make a Simple Country Woods Friend Card

Mary Fish
maryfish@stampinpretty.com
<http://stampinpretty.com>



2. stamp:

- Use a [Mini MISTI](#) stamp tool to position and stamp the sentiment (Country Birdhouse) in Night of Navy Classic Ink onto the Basic White layer. Watch my [1 Minute to WOW video](#): The Magic of the Mini MISTI for a quick product demonstration [here](#).

3. crop:

- Crop flowers and leaves using the Country Birdhouse Dies in Night of Navy, Mist Moonlight, Petal Pink and Basic White with the [Stampin' Cut & Emboss Machine](#) (Standard or Mini).

4. assemble & adhere:

- Burnish the fold of the card base with a Bone Folder.
- Assemble and adhere die cut flowers/leaves, "planks" and card stock layers with MultiPurpose Liquid Glue as shown. Adhere the sentiment with Stampin' Dimensionals

5. embellish:

- Embellish as shown with adhesive backed Petal Pink foiled gems (Petal Pink & Pretty Peacock Foiled Gems)
- Tie Petal Pink ¼" ribbon (Petal Pink & White ¼ Diagonal Trim Combo Pack) in a bow and adhere with a Mini Glue Dot

6. envelope:

- Adhere 5 3/4 x 2 1/2 Designer Series Paper to a Basic White Medium envelope flap with Multipurpose Liquid Glue. Flip to the inside of the flap and carefully snip away the excess with Paper Snips.

Make a Simple Country Woods Friend Card

Mary Fish
maryfish@stampinpretty.com
<http://stampinpretty.com>

learn more:

- Watch my [1 Minute to WOW! Video Tutorial](#) for tips on adding DSP to the envelope flap of my Country Woods friend card [here](#).
- Watch ALL my [1 Minute to WOW Video Tutorials](#) for quick paper crafting tips [here](#).

[CLICK FOR BLOG POST](#)

[CLICK TO SHOP](#)



[Country Woods Suite Collection \(English\) - 163418](#)

Price: \$152.25



[Country Birdhouse Bundle \(English\) - 163401](#)

Price: \$46.75



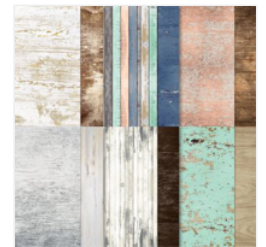
[Country Birdhouse Photopolymer Stamp Set \(English\) - 163395](#)

Price: \$20.00



[Country Birdhouse Dies - 163400](#)

Price: \$32.00



[Country Woods 12" X 12" \(30.5 X 30.5 Cm\) Designer Series Paper - 163393](#)

Price: \$12.50



[Night Of Navy Classic Stampin' Pad - 147110](#)

Price: \$9.00



[Basic White 8-1/2" X 11" Cardstock - 159276](#)

Price: \$13.00



[Night Of Navy 8-1/2" X 11" Cardstock - 100867](#)

Price: \$11.50



[Misty Moonlight 8-1/2" X 11" Cardstock - 153081](#)

Price: \$11.50

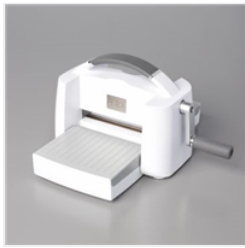


[Petal Pink 8-1/2" X 11" Cardstock - 146985](#)

Price: \$11.50

Make a Simple Country Woods Friend Card

Mary Fish
maryfish@stampinpretty.com
<http://stampinpretty.com>



[Stampin' Cut & Emboss Machine - 149653](#)

Price: \$130.00



[Mini Stampin' Cut & Emboss Machine - 150673](#)

Price: \$66.00



[Bone Folder - 102300](#)

Price: \$8.00



[Multipurpose Liquid Glue - 110755](#)

Price: \$6.00



[Stampin' Dimensionals - 104430](#)

Price: \$4.25



[Petal Pink & Pretty Peacock Foiled Gems - 162587](#)

Price: \$8.00



[Petal Pink & White 1/4" \(6.4 Mm\) Diagonal Trim Combo Pack - 163417](#)

Price: \$10.00



[Mini Glue Dots - 103683](#)

Price: \$7.25



[Basic White Medium Envelopes - 159236](#)

Price: \$11.00



[Paper Snips Scissors - 103579](#)

Price: \$12.00