

A Simple Autumn Card That Expresses your Gratitude in Glorious Colors!

Mary Fish
maryfish@stampinpretty.com
<http://stampinpretty.com>


stampin' pretty
step-by-step tutorial



how to cut your cardstock & dimensions:

- Blackberry Bliss Card Stock:
Card Base – 4 1/4 x 11, scored at 5 1/2 (side)
- Wild Wheat Card Stock:
Layer – 4 x 5 1/4
Die-Cut Sentiment – 3 x 2 (before die-cutting)
- Splendid Autumn Designer Series Paper:
Layer – 3 3/4 x 5
Envelope Flap – 5 3/4 x 2 1/2 (before snipping)

A Simple Autumn Card That Expresses your Gratitude in Glorious Colors!

Mary Fish
maryfish@stampinpretty.com
<http://stampinpretty.com>



how to make this simple card:

1. Burnish the fold of the Blackberry Bliss card base with a Bone Folder.
2. Adhere the Splendid Autumn Designer Series Paper layer to the Wild Wheat layer with Multipurpose Liquid Glue.
3. Wrap with Blackberry Bliss & Gold 1/2 Textured Ribbon, adhering to the back with Mini Glue Dots.
4. Adhere the layer to the card base with Stampin' Dimensionals.
5. Use a [Mini MISTI](#) stamp tool to position and stamp the sentiment (Autumn Expressions Stamp Set) in Blackberry Bliss Classic Ink onto the Wild Wheat layer. Watch my [1 Minute to WOW video](#): The Magic of the Mini MISTI for a quick product demonstration [here](#).
6. Crop with a [Stampin' Cut & Emboss Machine](#) (Standard or Mini) and the coordinating Autumn Expressions label die.
7. Adhere 2 Woven Golden Leaves and a bow of Copper Clay Natural Linen Thread as shown with Mini Glue Dots.
8. **POP OF PERSONALITY!** Embellish with 3 Cajun Craze Faux Glass Dots.
9. **PERFECT POLISH!** Adhere the 5 3/4 x 2 1/2 Designer Series Paper to the Basic White Medium envelope flap with Multipurpose Liquid Glue. **PRETTY TIP!** Add glue to the flap, not the Designer Series Paper. Flip to the inside of the flap and carefully snip away the excess with Paper Snips. Watch my [1 Minute to WOW Video Tutorial](#) to learn how [here](#).

[CLICK FOR BLOG POST](#)

[CLICK TO SHOP](#)

A Simple Autumn Card That Expresses your Gratitude in Glorious Colors!

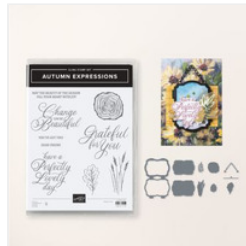
Mary Fish
maryfish@stampinpretty.com
<http://stampinpretty.com>



[Splendid Autumn Suite Collection \(English\) - 164062](#)

Price: \$89.75

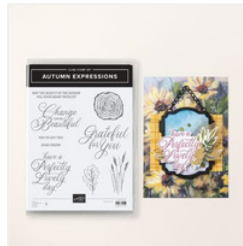
Add to Cart



[Autumn Expressions Bundle \(English\) - 164056](#)

Price: \$51.25

Add to Cart



[Autumn Expressions Cling Stamp Set \(English\) - 164174](#)

Price: \$25.00

Add to Cart



[Autumn Expressions Dies - 164055](#)

Price: \$32.00

Add to Cart



[Splendid Autumn 6" X 6" \(15.2 X 15.2 Cm\) Designer Series Paper - 164173](#)

Price: \$12.50

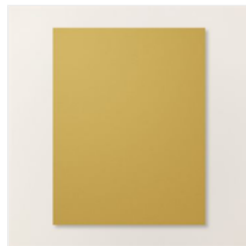
Add to Cart



[Blackberry Bliss 8-1/2" X 11" Cardstock - 133675](#)

Price: \$11.50

Add to Cart



[Wild Wheat 8-1/2" X 11" Cardstock - 161725](#)

Price: \$11.50

Add to Cart



[Blackberry Bliss Classic Stampin' Pad - 147092](#)

Price: \$9.00

Add to Cart



[Basic White Medium Envelopes - 159236](#)

Price: \$11.00

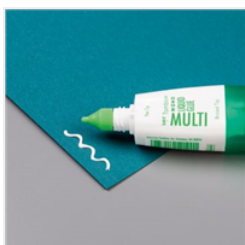
Add to Cart



[Bone Folder - 102300](#)

Price: \$8.00

Add to Cart



[Multipurpose Liquid Glue - 110755](#)

Price: \$6.00

Add to Cart



[Paper Snips Scissors - 103579](#)

Price: \$12.00

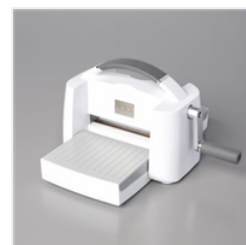
Add to Cart



[Paper Trimmer - 152392](#)

Price: \$28.00

Add to Cart



[Stampin' Cut & Emboss Machine - 149653](#)

Price: \$130.00

Add to Cart



[Stampin' Dimensionals - 104430](#)

Price: \$4.25

Add to Cart

A Simple Autumn Card That Expresses your Gratitude in Glorious Colors!

Mary Fish
maryfish@stampinpretty.com
<http://stampinpretty.com>



[Blackberry Bliss & Gold 1/2" \(1.3 Cm\) Textured Ribbon - 164039](#)

Price: \$10.00

[Add to Cart](#)



[Faux Glass Dots - 164060](#)

Price: \$8.50

[Add to Cart](#)