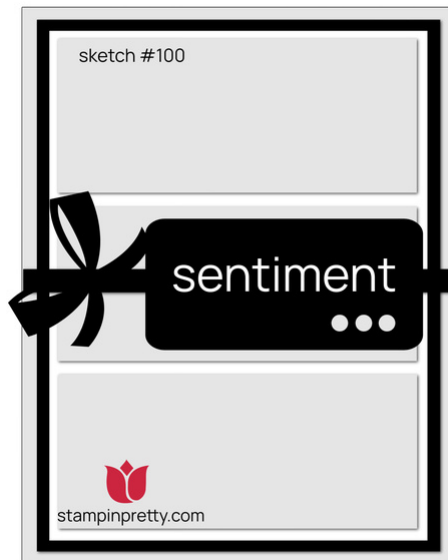


A Regal Winter Autumn Screen Card

Mary Fish
maryfish@stampinpretty.com
<http://stampinpretty.com>



how to cut your cardstock & dimensions:

- Wild Wheat Card Stock:
Card Base – 4 1/4 x 11, scored at 5 1/2 (top)
- Basic Black Card Stock:
Layer – 4 x 5 1/4
- Very Vanilla Card Stock:
Layer – 3 3/4 x 5
Sentiment Die-Cut – 3 1/2 x 1 3/4 (before die-cutting)
- Regal Winter Designer Series Paper:
Floral Strips (x 2) – 3 1/2 x 1 1/2
More Solid Strip (x1) – 3 1/2 x 1 1/2

A Regal Winter Autumn Screen Card

Mary Fish

maryfish@stampinpretty.com

<http://stampinpretty.com>



how to make this simple autumn screen card:

1. Begin by burnishing the fold of the Card Basic with a Bone Folder.
2. Adhere the Very Vanilla and Basic Black layers together with Multipurpose Liquid Glue.
3. Adhere the strips of Designer Series Paper to the Very Vanilla layer with Multipurpose Liquid Glue.
 - **PRETTY TIP!** Watch my 1 Minute to WOW! Video Tutorial: [3 Tips for Lining Up Strips](#).
4. Wrap the layers with Black & Very Vanilla 3/8" Large Check Ribbon, securing with a bow.
5. Tie a bow of Very Vanilla Baker's Twine and secure as shown with a Mini Glue Dot.
 - **PRETTY TIP!** Ball up the glue dot with your fingers so it doesn't show behind the knot
6. Adhere the layer to the card base as shown with Stampin' Dimensionals.
7. Use a [Mini MISTI](#) stamp tool to position and stamp the sentiment (Enjoying Little Things) in Tuxedo Black Memento Ink onto the Very Vanilla layer.
 - **PRETTY TIP!** Watch my [1 Minute to WOW video](#): The Magic of the Mini MISTI for a quick product demonstration [here](#).
8. Crop with a [Stampin' Cut & Emboss Machine](#) (Standard or Mini) and the 3 x 1 3/8 Countryside Corners die.
9. Adhere as shown with Stampin' Dimensionals.
10. **POP OF PERSONALITY!** Embellish with 3 Wild Wheat Faux Glass Dots.

[CLICK FOR BLOG POST](#)

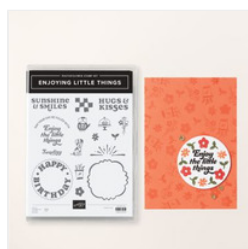
[CLICK TO SHOP](#)

A Regal Winter Autumn Screen Card

Mary Fish

maryfish@stampinpretty.com

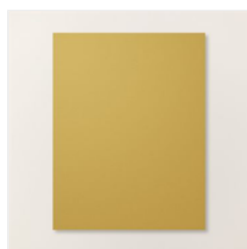
<http://stampinpretty.com>



[Enjoying Little Things Photopolymer Stamp Set \(English\) - 164263](#)

Price: \$20.00

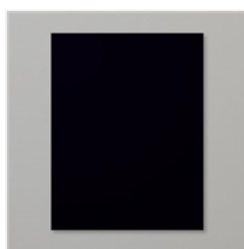
[Add to Cart](#)



[Wild Wheat 8-1/2" X 11" Cardstock - 161725](#)

Price: \$11.50

[Add to Cart](#)



[Basic Black 8-1/2" X 11" Cardstock - 121045](#)

Price: \$11.50

[Add to Cart](#)



[Very Vanilla 8-1/2" X 11" Cardstock - 101650](#)

Price: \$13.00

[Add to Cart](#)



[Regal Winter 12" X 12" \(30.5 X 30.5 Cm\) Designer Series Paper - 164156](#)

Price: \$12.50

[Add to Cart](#)



[Countryside Corners Dies - 161471](#)

Price: \$28.00

[Add to Cart](#)



[Black & Very Vanilla 3/8" \(1 Cm\) Large Check Ribbon - 161982](#)

Price: \$8.00

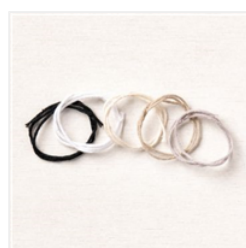
[Add to Cart](#)



[Faux Glass Dots - 164060](#)

Price: \$8.50

[Add to Cart](#)



[Baker's Twine Essentials Pack - 155475](#)

Price: \$11.00

[Add to Cart](#)



[Tuxedo Black Memento Ink Pad - 132708](#)

Price: \$8.00

[Add to Cart](#)



[Bone Folder - 102300](#)

Price: \$8.00

[Add to Cart](#)



[Multipurpose Liquid Glue - 110755](#)

Price: \$6.00

[Add to Cart](#)



[Stampin' Dimensionals - 104430](#)

Price: \$4.25

[Add to Cart](#)



[Paper Snips Scissors - 103579](#)

Price: \$12.00

[Add to Cart](#)



[Paper Trimmer - 152392](#)

Price: \$28.00

[Add to Cart](#)

A Regal Winter Autumn Screen Card

Mary Fish

maryfish@stampinpretty.com

<http://stampinpretty.com>



[Stampin' Cut &
Emboss Machine -
149653](#)

Price: \$130.00

Add to Cart