

Summer with Alphabet à la Mode!

Mary Fish
maryfish@stampinpretty.com
<http://stampinpretty.com>



CUT YOUR CARD STOCK – DIMENSIONS:

- Basic Black Card Stock:
 - Card Base – 5 1/2 x 8 1/2 scored at 4 1/4 (top)
 - Die-Cut Letters – 6 x 2 (before die-cutting all)
- Basic White Card Stock:
 - Layer – 5 1/4 x 4
- Summer Splash, Crushed Curry, Berry Burst, Pumpkin Pie, Real Red, Granny Apple Green:
 - Die-Cut Rectangles – 1 1/4 x 2 (before die-cutting)
- Summer Splash 2024-2026 In Color 6 x 6 Designer Series Paper :
 - Envelope Flap – 5 3/4 x 2 1/2 (before snipping)

Summer with Alphabet à la Mode!

Mary Fish

maryfish@stampinpretty.com

<http://stampinpretty.com>



PROJECT TUTORIAL:

1. Burnish the fold of the Basic Black Card base with a Bone Folder.
2. Use a [Mini MISTI](#) stamp tool to position and stamp the dragonfly (Happiest Day stamp set) in Tuxedo Black Memento Ink onto the Basic White layer as shown. Watch my [1 Minute to WOW video](#): The Magic of the Mini MISTI for a quick product demonstration [here](#).
3. Adhere the Basic White layer to the card base as shown with Multipurpose Liquid Glue.
4. Crop each color of card stock with a [Stampin' Cut & Emboss Machine](#) (Standard or Mini) and the 1 x 1 3/4 Nested Essentials die.
5. Crop the letters (SUMMER) from the Basic Black card stock using the Alphabet a La Mode dies and a [Stampin' Cut & Emboss Machine](#) (Standard or Mini).
6. Adhere the letters to the colored die-cut pieces with a small amount of Multipurpose Liquid Glue.
7. Adhere the "U", 2nd "M" and "R" to the Basic White layer with Multipurpose Liquid Glue and the "S", 1st "M" and "E" to the card with Stampin' Dimensionals.
8. **POP OF PERSONALITY!** Embellish with 3 Summer Splash 2024-2026 In Color Resin Dots.
9. **PERFECT POLISH!** Adhere the 5 3/4 x 2 1/2 Designer Series Paper to the Basic White Medium envelope flap with Multipurpose Liquid Glue. Add glue to the flap. Flip to the inside of the flap and carefully snip away the excess with Paper Snips. Learn how with my 1 Minute to WOW video [here](#).

Summer with Alphabet à la Mode!

Mary Fish

maryfish@stampinpretty.com

<http://stampinpretty.com>

[CLICK FOR BLOG POST](#)

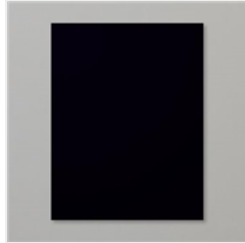
[CLICK TO SHOP](#)



Happiest Day
Photopolymer
Stamp Set
(English) - 163605

Price: \$20.00

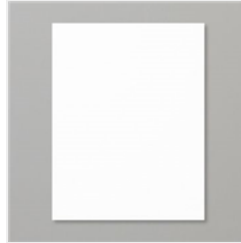
[Add to Cart](#)



Basic Black 8-1/2"
X 11" Cardstock -
121045

Price: \$11.50

[Add to Cart](#)



Basic White 8-1/2"
X 11" Cardstock -
159276

Price: \$13.00

[Add to Cart](#)



Tuxedo Black
Memento Ink Pad -
132708

Price: \$8.00

[Add to Cart](#)



Paper Trimmer -
152392

Price: \$28.00

[Add to Cart](#)



Bone Folder -
102300

Price: \$8.00

[Add to Cart](#)



Multipurpose
Liquid Glue -
110755

Price: \$6.00

[Add to Cart](#)



Stampin'
Dimensionals -
104430

Price: \$4.25

[Add to Cart](#)



Basic White
Medium Envelopes
- 159236

Price: \$11.00

[Add to Cart](#)



Paper Snips
Scissors - 103579

Price: \$12.00

[Add to Cart](#)



2024-2026 In
Color™ Resin Dots
- 163389

Price: \$8.00

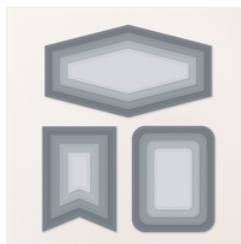
[Add to Cart](#)



Alphabet À la
Mode Dies -
160750

Price: \$42.00

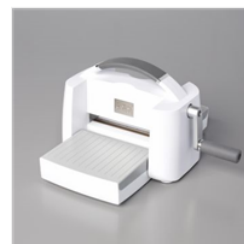
[Add to Cart](#)



Nested Essentials
Dies - 161597

Price: \$34.00

[Add to Cart](#)



Stampin' Cut &
Emboss Machine -
149653

Price: \$130.00

[Add to Cart](#)



Mini Stampin' Cut
& Emboss
Machine - 150673

Price: \$66.00

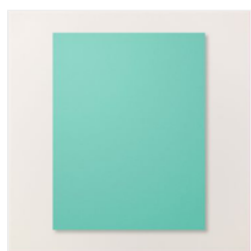
[Add to Cart](#)

Summer with Alphabet à la Mode!

Mary Fish

maryfish@stampinpretty.com

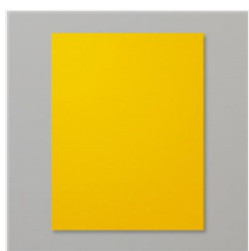
<http://stampinpretty.com>



Summer Splash 8-1/2" X 11" Cardstock - 163797

Price: \$11.50

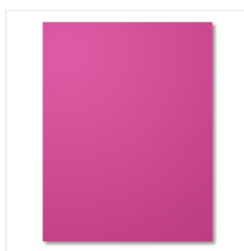
Add to Cart



Crushed Curry 8-1/2" X 11" Cardstock - 131199

Price: \$11.50

Add to Cart



Berry Burst 8-1/2" X 11" Cardstock - 144243

Price: \$11.50

Add to Cart



Pumpkin Pie 8-1/2" X 11" Cardstock - 105117

Price: \$11.50

Add to Cart



Real Red 8-1/2" X 11" Cardstock - 102482

Price: \$11.50

Add to Cart



Granny Apple Green 8-1/2" X 11" Cardstock - 146990

Price: \$11.50

Add to Cart



2024-2026 In Color™ 6" X 6" (15.2 X 15.2 Cm) Designer Series Paper - 163777

Price: \$12.50

Add to Cart