

# identify your embossing folders

standard

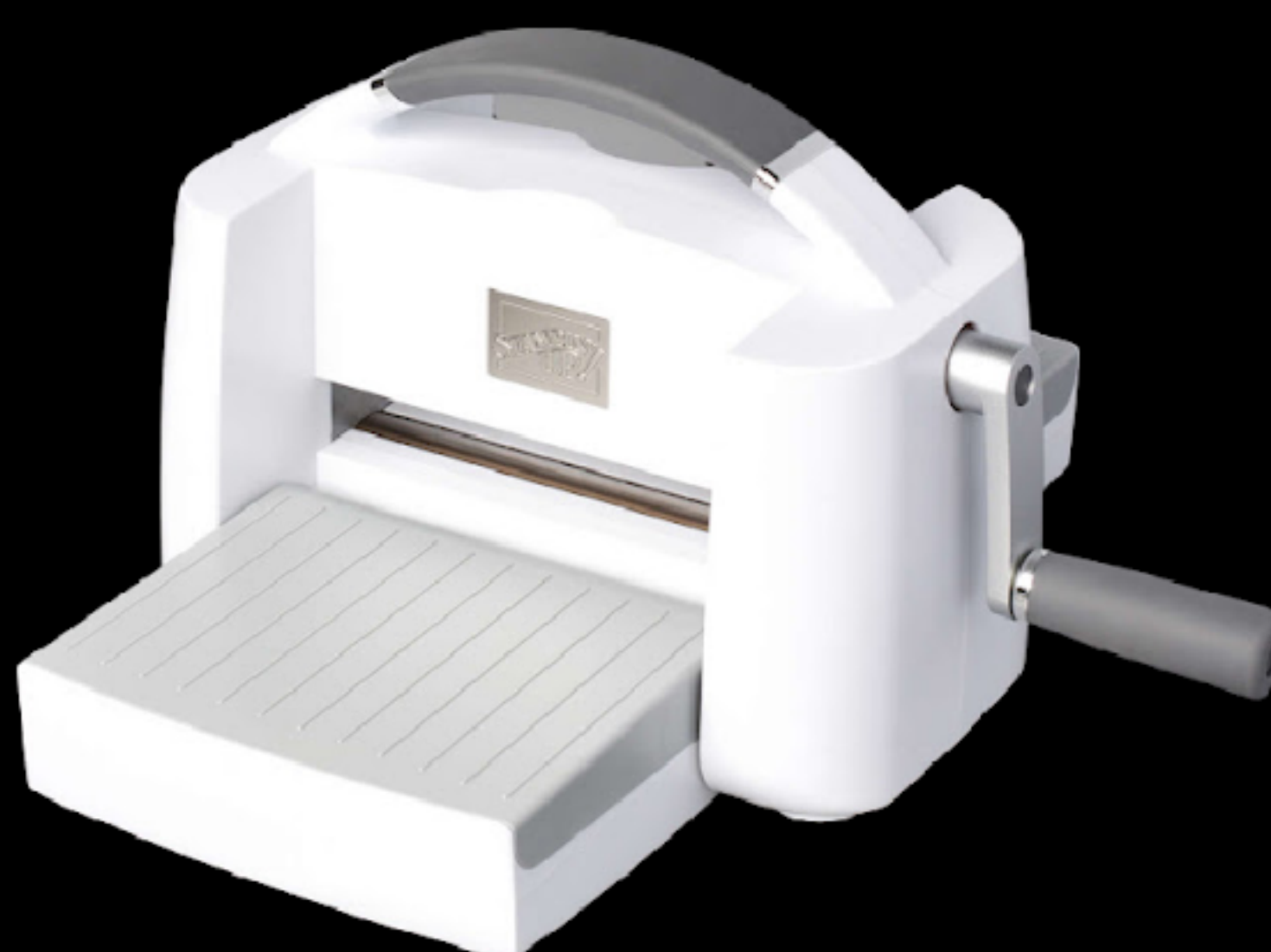
approx.  
1/16" total  
thickness

3D

approx.  
1/8" total  
thickness

dynamic  
(retired)

approx.  
3/16" total  
thickness



 stampinpretty.com

## IDENTIFY YOUR EMBOSSING FOLDER TYPE!

There are three types of folders that have been offered by Stampin' Up! Their thicknesses vary by design so it is ESSENTIAL to know what type of folder you have so you know what type of sandwich you will need.

### **TYPE 1: Standard Embossing Folders (Current)**

Approximately 1/16" Total Thickness

### **TYPE 2: 3D Embossing Folders (Current)**

Approximately 1/8" Total Thickness

### **TYPE 3: Dynamic Embossing Folders (Retired)**

Approximately 3/16" Total Thickness

**HOW TO IDENTIFY IT:** It will have both a SIZZIX & Stampin' Up! Logo

**PRETTY TIP:** Label or mark your folders so you know which type of embossing folder you are working with!