

Create This Quick So Swirly Happy Birthday Card

Mary Fish
maryfish@stampinpretty.com
<http://stampinpretty.com>


stampin' pretty
step-by-step tutorial



CUT YOUR CARD STOCK – DIMENSIONS:

- Basic White Thick Card Stock:
Card Base – 4 1/4 x 11, scored at 5 1/2 (side)
- Basic Black Card Stock:
Layer – 4 x 4 1/2
Die-Cut Tag – 1 x 4 3/4 (before die-cutting)
- Summer Splash Card Stock:
Embossed Layer – 4 x 4 1/2 (before trimming to size)
- Basic White Card Stock:
Stamped & Die-Cut Sentiment - 1 1/4 x 5 (before die-cutting)

Create This Quick So Swirly Happy Birthday Card

Mary Fish
maryfish@stampinpretty.com
<http://stampinpretty.com>



PROJECT TUTORIAL:

1. Burnish the fold of the Basic White Thick card base with a Bone Folder.
2. Tuck the Summer Splash layer inside the So Swirly Embossing Folder and zip through a the [Stampin' Cut and Emboss Machine](#) (Standard).
3. Use a Paper Trimmer to trim to 3 3/4 x 4 1/4.
4. Adhere to the Basic Black layer with Multipurpose Liquid Glue.
5. Wrap with Iridescent 1/2" Striped Trim, securing with a bow as shown.
6. Adhere to the card base with Stampin' Dimensionals.
7. Use a [Mini MISTI](#) stamp tool to position and stamp the sentiment (Sweetly Scripted Stamp Set) in Tuxedo Black Memento Ink onto the Basic White layer. Watch my [1 Minute to WOW video](#): The Magic of the Mini MISTI for a quick product demonstration [here](#).
8. Crop the stamped sentiment and the Basic Black layer with a [Stampin' Cut & Emboss Machine](#) (Standard or Mini) and the Greetings of the Season 3/4 x 4 1/2 tag die.
9. Thread a piece of black Baker's Twine Essentials through the hole of both the black and the white tag end.
10. Wrap around the center of the iridescent ribbon bow and secure in place with a bow.
11. Adhere both tags in place as shown with a Stampin' Dimensionals near the flagged end.
12. **POP OF PERSONALITY!** Embellish with 3 Coastal Cabana Ombre Matte Decorative Dots.
13. **PERFECT POLISH!** Adhere a 5 3/4 x 3 piece of Summer Splash Designer Series Paper (2024-2026 In Color 6 x 6) to the Basic White Medium Envelope. I used the "backside" of an Around the Bend Die (an [On-Line Exclusive](#)) to continue the "wave" design on the envelope flap. See it in action [here](#). Or consider using the So Swirly embossing folder on the envelope flap, too, as I demonstrated in this 1 Minute to WOW! Video Tutorial [here](#).

[CLICK FOR BLOG POST](#)

[CLICK TO SHOP](#)

Create This Quick So Swirly Happy Birthday Card

Mary Fish
maryfish@stampinpretty.com
<http://stampinpretty.com>



Sweetly Scripted Cling Stamp Set (English) - 163600

Price: \$24.00

Add to Cart



So Swirly Embossing Folder - 163791

Price: \$10.50

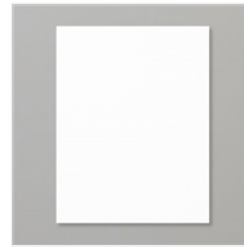
Add to Cart



Greetings Of The Season Dies - 164112

Price: \$32.00

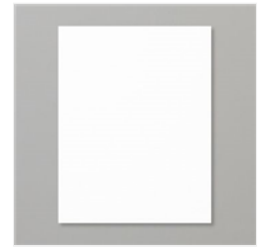
Add to Cart



Basic White 8-1/2" X 11" Thick Cardstock - 159229

Price: \$11.25

Add to Cart



Basic White 8-1/2" X 11" Cardstock - 159276

Price: \$13.00

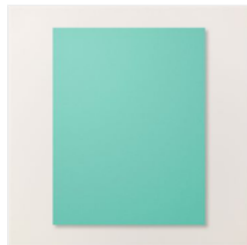
Add to Cart



Basic Black 8-1/2" X 11" Cardstock - 121045

Price: \$11.50

Add to Cart



Summer Splash 8-1/2" X 11" Cardstock - 163797

Price: \$11.50

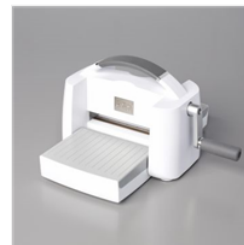
Add to Cart



Paper Trimmer - 152392

Price: \$28.00

Add to Cart



Stampin' Cut & Emboss Machine - 149653

Price: \$130.00

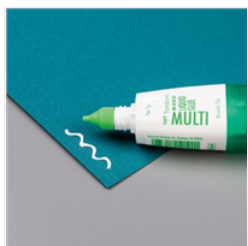
Add to Cart



Bone Folder - 102300

Price: \$8.00

Add to Cart



Multipurpose Liquid Glue - 110755

Price: \$6.00

Add to Cart



Paper Snips Scissors - 103579

Price: \$12.00

Add to Cart



Stampin' Dimensionals - 104430

Price: \$4.25

Add to Cart



Iridescent 1/2" (1.3 Cm) Striped Trim - 163299

Price: \$8.50

Add to Cart



Basic White Medium Envelopes - 159236

Price: \$11.00

Add to Cart

Create This Quick So Swirly Happy Birthday Card

Mary Fish
maryfish@stampinpretty.com
<http://stampinpretty.com>



Baker's Twine
Essentials Pack -
155475

Price: \$11.00

Add to Cart



Around The Bend
Dies - 160649

Price: \$33.00

Add to Cart



Ombre Matte
Decorative Dots -
161448

Price: \$8.00

Add to Cart