

# Simple Christmas Card with Greetings of the Season Bundle!

Mary Fish  
[maryfish@stampinpretty.com](mailto:maryfish@stampinpretty.com)  
<http://stampinpretty.com>



## CUT YOUR CARD STOCK – DIMENSIONS:

- Basic White Thick Card Stock:  
Card Base - 4 1/4 x 11, scored at 5 1/2 (top)
- Pecan Pie Card Stock:  
Layer - 3 3/4 x 5  
Sentiment - 1 1/2 x 1 (before die-cutting & snipping)
- Mossy Meadow Card Stock:  
Layer - 3 1/2 x 3 1/2
- Basic White Card Stock:  
Die-Cut Sentiment - 2 3/4 x 1 3/4 (before die-cutting)
- Iconic Celebrations 6 x 6 Designer Series Pap  
Tree Print Layer - 3 1/2 x 3 1/2  
Envelope Flap - 5 3/4 x 2 1/2 (before snipping)

# Simple Christmas Card with Greetings of the Season Bundle!

Mary Fish  
[maryfish@stampinpretty.com](mailto:maryfish@stampinpretty.com)  
<http://stampinpretty.com>



## PROJECT TUTORIAL:

1. Burnish the fold of the Basic White Thick card base with a Bone Folder.
2. Adhere the Pecan Pie layer to the card base with Multipurpose Liquid Glue.
3. Layer and adhere the Designer Series Paper to the Mossy Meadow layer together with Multipurpose Liquid Glue and to the card with Stampin' Dimensionals.
4. Use a [Mini MISTI](#) stamp tool to stamp the "Christmas" sentiment (Greetings of the Season stamp set) in Mossy Meadow Classic Ink onto the lower part of the Basic White layer. Watch my [1 Minute to WOW video](#): The Magic of the [Mini MISTI](#) for a quick demonstration [here](#).
5. Rub the Pecan Pie layer with an Embossing Buddy (Embossing Additions Tool Kit).
6. Use a [Mini MISTI](#) stamp tool to stamp the "MERRY" sentiment (Greetings of the Season stamp set) in Versamark Classic Ink (twice) onto the center of the Pecan Pie layer.
7. Cover the sentiment with white Basics WOW! Embossing Powder. Tap to remove the excess. Set with a Heat Tool.
8. Use the [Stampin' Cut and Emboss Machine](#) (Standard or Mini) to crop both sentiments with the coordinating Greetings of the Season dies.
9. Use Paper Snips to snip the end of each side of the "MERRY".
10. Tie a bow of Linen Thread through the hole on the left side of the sentiment.
11. Adhere the two sentiments together with Mini Stampin' Dimensionals.
12. Adhere the tag to the card with Stampin' Dimensionals (doubled on the top, single on side touching the tree layer).
13. **POP OF PERSONALITY!** Embellish as shown with 3 Pecan Pie Adhesive-Backed Swirl Dots.
14. **PERFECT POLISH!** Adhere the 5 3/4 x 2 1/2 Designer Series Paper to the Basic White Note Card envelope flap with Multipurpose Liquid Glue. Add glue to the flap. Flip to the inside of the flap and carefully snip away the excess with Paper Snips. Watch my [1 Minute to WOW Video Tutorial](#) to learn how [here](#).

[CLICK FOR BLOG POST](#)

[CLICK TO SHOP](#)

# Simple Christmas Card with Greetings of the Season Bundle!

Mary Fish  
[maryfish@stampinpretty.com](mailto:maryfish@stampinpretty.com)  
<http://stampinpretty.com>



Greetings Of The Season Bundle (English) - 164113

Price: \$51.25

Add to Cart



Greetings Of The Season Photopolymer Stamp Set (English) - 164325

Price: \$25.00

Add to Cart



Greetings Of The Season Dies - 164112

Price: \$32.00

Add to Cart



Basic White 8-1/2" X 11" Cardstock - 159276

Price: \$13.00

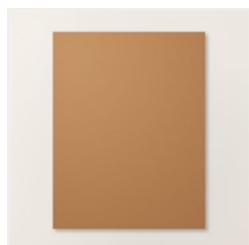
Add to Cart



Basic White 8-1/2" X 11" Thick Cardstock - 159229

Price: \$11.25

Add to Cart



Pecan Pie 8-1/2" X 11" Cardstock - 161717

Price: \$11.50

Add to Cart



Mossy Meadow 8-1/2" X 11" Cardstock - 133676

Price: \$11.50

Add to Cart



Iconic Celebrations 6" X 6" (15.2 X 15.2 Cm) Designer Series Paper - 164193

Price: \$12.50

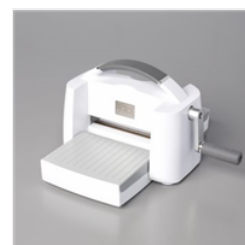
Add to Cart



Paper Trimmer - 152392

Price: \$28.00

Add to Cart



Stampin' Cut & Emboss Machine - 149653

Price: \$130.00

Add to Cart



Mini Stampin' Cut & Emboss Machine - 150673

Price: \$66.00

Add to Cart



Bone Folder - 102300

Price: \$8.00

Add to Cart



Multipurpose Liquid Glue - 110755

Price: \$6.00

Add to Cart



Paper Snips Scissors - 103579

Price: \$12.00

Add to Cart



Stampin' Dimensionals - 104430

Price: \$4.25

Add to Cart

# Simple Christmas Card with Greetings of the Season Bundle!

Mary Fish  
[maryfish@stampinpretty.com](mailto:maryfish@stampinpretty.com)  
<http://stampinpretty.com>



Basic White  
Medium Envelopes  
- 159236

Price: \$11.00

Add to Cart



Adhesive-Backed  
Swirl Dots -  
163464

Price: \$8.00

Add to Cart



Linen Thread -  
104199

Price: \$5.00

Add to Cart



Basics Wow!  
Embossing  
Powder - 165679

Price: \$21.00

Add to Cart



Embossing  
Additions Tool Kit -  
159971

Price: \$27.00

Add to Cart



Heat Tool - 129053

Price: \$32.00

Add to Cart



VersaMark Pad -  
102283

Price: \$9.50

Add to Cart



Mossy Meadow  
Classic Stampin'  
Pad - 147111

Price: \$9.00

Add to Cart