

# Make a Modern “Thanks” Message with Simply Zinnia

Mary Fish  
[maryfish@stampinpretty.com](mailto:maryfish@stampinpretty.com)  
<http://stampinpretty.com>



## CUT YOUR CARD STOCK – DIMENSIONS:

- Basic White Thick Card Stock:  
Card Base – 4 1/4 x 11, scored at 5 1/2
- Basic White Card Stock:  
Stamped Layer – 2 3/4 x 4 3/4
- Basic Black Card Stock:  
Layer & Die-Cut Thanks – 3 3/4 x 5
- Crushed Curry Card Stock:  
Die-Cut Thanks – 1 1/4 x 3 3/4 (before die-cutting)
- Crushed Curry Regals Designer Series Paper:  
Envelope Flap – 5 3/4 x 2 1/2

# Make a Modern “Thanks” Message with Simply Zinnia

Mary Fish

[maryfish@stampinpretty.com](mailto:maryfish@stampinpretty.com)

<http://stampinpretty.com>



## PROJECT TUTORIAL:

1. Burnish the fold of the Basic White Thick card base with a Bone Folder.
2. Use a [Stampin' Cut & Emboss Machine](#) (Standard) to crop the “Thanks” vertically from the center of the 3 3/4 x 5 Basic Black layer.
3. Layer and adhere the Basic Black die-cut layer to the Crushed Curry layer together and to the card base with Multipurpose Liquid Glue.
4. Use a [Mini MISTI](#) stamp tool to stamp and position the zinnia (Simply Zinnia stamp set) in Tuxedo Black Memento Ink onto the 2 3/4 x 4 3/4 Basic White card stock. Watch my [1 Minute to WOW video](#): The Magic of the Mini MISTI for a quick product demonstration [here](#).
5. Adhere to the card as shown with Multipurpose Liquid Glue.
6. Use a [Stampin' Cut & Emboss Machine](#) (Standard or Mini) to crop the Crushed Curry card stock with the “thanks” (Thanks & Beyond) die.
7. Adhere the Crushed Curry and Basic Black “thanks” together and slightly offset with Multipurpose Liquid Glue to create a drop shadow. See my WOW! Video for a quick demonstration [here](#).
8. Use a Paper Snips to cut Mini Stampin' Dimensionals in half and adhere the thanks die-cut to the card.
9. **POP OF PERSONALITY!** Embellish with 3 Crushed Curry Dots for Days as shown.
10. **PERFECT POLISH!** Adhere the 5 3/4 x 2 1/2 Designer Series Paper to the Basic White Note Card envelope flap with Multipurpose Liquid Glue. Add glue to the flap.

[CLICK FOR BLOG POST](#)

[CLICK TO SHOP](#)

# Make a Modern "Thanks" Message with Simply Zinnia

Mary Fish  
[maryfish@stampinpretty.com](mailto:maryfish@stampinpretty.com)  
<http://stampinpretty.com>

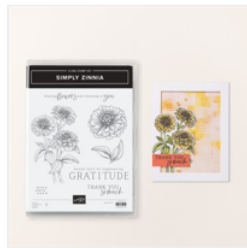


Simply Zinnia Bundle (English) - 163480

**Sale: \$46.25**

Price: \$52.00

Add to Cart



Simply Zinnia Cling Stamp Set (English) - 163472

Price: \$25.00

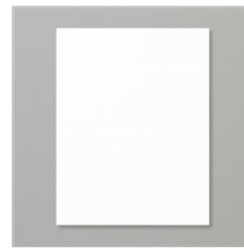
Add to Cart



Thanks & Beyond Dies - 164397

Price: \$12.00

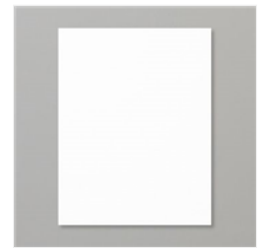
Add to Cart



Basic White 8-1/2" X 11" Thick Cardstock - 159229

Price: \$11.25

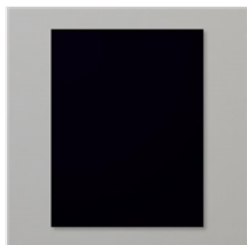
Add to Cart



Basic White 8-1/2" X 11" Cardstock - 159276

Price: \$13.00

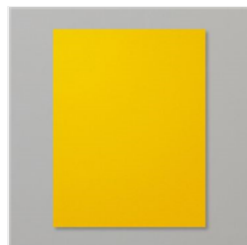
Add to Cart



Basic Black 8-1/2" X 11" Cardstock - 121045

Price: \$11.50

Add to Cart



Crushed Curry 8-1/2" X 11" Cardstock - 131199

Price: \$11.50

Add to Cart



Paper Trimmer - 152392

Price: \$28.00

Add to Cart



Bone Folder - 102300

Price: \$8.00

Add to Cart



Multipurpose Liquid Glue - 110755

Price: \$6.00

Add to Cart

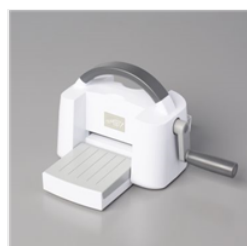


Stampin' Cut & Emboss Machine - 149653

**Sale: \$117.00**

Price: \$130.00

Add to Cart



Mini Stampin' Cut & Emboss Machine - 150673

**Sale: \$59.40**

Price: \$66.00

Add to Cart



Boho Blue Limited Edition Mini Stampin' Cut & Emboss Machine - 161104

**Sale: \$56.70**

Price: \$63.00

Add to Cart



Paper Snips Scissors - 103579

Price: \$12.00

Add to Cart



Basic White Medium Envelopes - 159236

Price: \$11.00

Add to Cart

# Make a Modern “Thanks” Message with Simply Zinnia

Mary Fish  
[maryfish@stampinpretty.com](mailto:maryfish@stampinpretty.com)  
<http://stampinpretty.com>



Mini Stampin'  
Dimensionals -  
144108

Price: \$4.25

Add to Cart



Adhesive-Backed  
Dots For Days -  
163779

Price: \$8.00

Add to Cart