

Design a Quick & Simple Penciled Pear Card

Mary Fish
maryfish@stampinpretty.com
<http://stampinpretty.com>


stampin' pretty
step-by-step tutorial



CUT YOUR CARD STOCK – DIMENSIONS:

- Pecan Pie Card Stock:
 - Card Base – 4 1/4 x 11, scored at 5 1/2
 - Die-Cut Octagon – 3 1/2 x 4 3/4 (before die-cutting)
- Old Olive Card Stock:
 - Layer – 4 x 5 1/4
 - Die-Cut Octagon – 3 1/4 x 4 1/2 (before die-cutting)
- Very Vanilla Card Stock:
 - Layer – 3 3/4 x 5
 - Sentiment – 1 3/4 x 1/2
- Pecan Pie Neutrals Designer Series Paper:
 - Envelope Flap – 5 3/4 x 2 1/2 (before snipping)

Design a Quick & Simple Penciled Pear Card

Mary Fish
maryfish@stampinpretty.com
<http://stampinpretty.com>



PROJECT TUTORIAL:

1. Burnish the fold of the Pecan Pie card base with a Bone Folder.
2. Layer and adhere the Very Vanilla and Old Olive layers together and to the card with Multipurpose Liquid Glue.
3. Use a [Mini MISTI](#) stamp tool to stamp and position the pear (Penciled Pear stamp set) in Pecan Pie Classic Ink onto the 3 1/4 x 4 1/2 Old Olive card stock. Watch my [1 Minute to WOW video](#): The Magic of the Mini MISTI for a quick product demonstration [here](#).
4. Use a [Stampin' Cut & Emboss Machine](#) (Standard or Mini) and the Countryside Corner dies to crop the Pecan Pie card stock with the 3 x 4 1/2 die and the Old Olive card stock with the 2 3/8 x 4 die.
5. Wrap the Pecan Pie die-cut with the Linen Thread, securing with a bow as shown.
6. Adhere to the card with Stampin' Dimensionals.
7. Use a [Mini MISTI](#) stamp tool to stamp and position the sentiment (Penciled Pear stamp set) in Pecan Pie Classic Ink onto the 1 3/4 x 1/2 piece of Very Vanilla card stock.
8. Adhere to the card as shown with Stampin' Dimensionals.
9. **POP OF PERSONALITY!** Embellish with 1 Pecan Pie Adhesive-Backed Swirl Dots.
10. **PERFECT POLISH!** Adhere the 5 3/4 x 2 1/2 Designer Series Paper to the Basic White Note Card envelope flap with Multipurpose Liquid Glue. Add glue to the flap. Flip to the inside of the flap and carefully snip away the excess with Paper Snips. Learn how with my 1 Minute to WOW video [here](#).

[CLICK FOR BLOG POST](#)

[CLICK TO SHOP](#)

Design a Quick & Simple Penciled Pear Card

Mary Fish

maryfish@stampinpretty.com

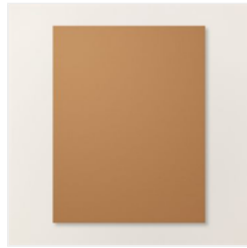
<http://stampinpretty.com>



Penciled Pear Cling Stamp Set (English) - 163526

Price: \$21.00

Add to Cart



Pecan Pie 8-1/2" X 11" Cardstock - 161717

Price: \$11.50

Add to Cart



Old Olive 8-1/2" X 11" Cardstock - 100702

Price: \$11.50

Add to Cart



Very Vanilla 8-1/2" X 11" Cardstock - 101650

Price: \$13.00

Add to Cart



Pecan Pie Classic Stampin' Pad - 161665

Price: \$9.00

Add to Cart



Paper Trimmer - 152392

Price: \$28.00

Add to Cart



Bone Folder - 102300

Price: \$8.00

Add to Cart



Stampin' Dimensionals - 104430

Price: \$4.25

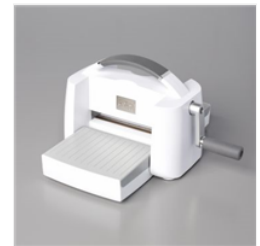
Add to Cart



Multipurpose Liquid Glue - 110755

Price: \$6.00

Add to Cart



Stampin' Cut & Emboss Machine - 149653

Sale: \$117.00

Price: \$130.00

Add to Cart



Mini Stampin' Cut & Emboss Machine - 150673

Sale: \$59.40

Price: \$66.00

Add to Cart



Boho Blue Limited Edition Mini Stampin' Cut & Emboss Machine - 161104

Sale: \$56.70

Price: \$63.00

Add to Cart



Countryside Corners Dies - 161471

Price: \$28.00

Add to Cart



Adhesive-Backed Swirl Dots - 163464

Price: \$8.00

Add to Cart



Paper Snips Scissors - 103579

Price: \$12.00

Add to Cart

Design a Quick & Simple Penciled Pear Card

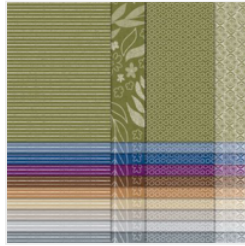
Mary Fish
maryfish@stampinpretty.com
<http://stampinpretty.com>



Basic White
Medium Envelopes
- 159236

Price: \$11.00

Add to Cart



Neutrals 6" X 6"
(15.2 X 15.2 Cm)
Designer Series
Paper - 163773

Price: \$12.50

Add to Cart



Linen Thread -
104199

Price: \$5.00

Add to Cart