

Mix & Match QUICK Happy Card!

Mary Fish
maryfish@stampinpretty.com
<http://stampinpretty.com>


stampin' pretty
step-by-step tutorial



CUT YOUR CARD STOCK – DIMENSIONS:

- Basic White Card Stock:
Die-Cut – 3 3/4 x 2 1/4 (before die-cutting)
- Shy Shamrock Card Stock:
Die-Cut – 4 1/4 x 2 3/4 (before die-cutting)

Mix & Match QUICK Happy Card!

Mary Fish

maryfish@stampinpretty.com

<http://stampinpretty.com>



PROJECT TUTORIAL:

1. Begin by burnishing the fold of the Sunny Springs card base with a Bone Folder.
2. Use a [Stampin' Cut & Emboss Machine](#) (Standard) to crop the following with the Countryside Corners dies:
 1. Basic White – 3 1/2 x 2 die
 - Shy Shamrock – 4 x 2 1/2 die
3. Use a Paper Trimmer to trim each hexagon top corner to bottom corner on the right side.
4. Adhere “Happy” (Saying Something Ephemera Pack) to the Basic White die-cut as shown.
5. Adhere the two die-cuts together and to the card with Stampin' Dimensionals.
6. Tie a bow of white Baker's Twine Essentials.
7. Adhere behind the die-cut corner, as shown, with a Mini Glue Dot
8. **POP OF PERSONALITY!** Embellish with 5 Shy Shamrock 2024-2026 In Color Resin Dots.

[CLICK FOR BLOG POST](#)

[CLICK TO SHOP](#)

Mix & Match QUICK Happy Card!

Mary Fish

maryfish@stampinpretty.com

<http://stampinpretty.com>



Saying Something
Mix & Match
Ephemera Pack
(English) - 163761

Price: \$8.00

[Add to Cart](#)



Sunny Springs Mix
& Match Cards &
Envelopes -
163754

Price: \$8.00

[Add to Cart](#)



Paper Trimmer -
152392

Price: \$28.00

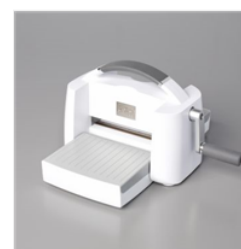
[Add to Cart](#)



Bone Folder -
102300

Price: \$8.00

[Add to Cart](#)



Stampin' Cut &
Emboss Machine -
149653

Price: \$130.00

[Add to Cart](#)



Countryside
Corners Dies -
161471

Price: \$28.00

[Add to Cart](#)



Stampin'
Dimensionals -
104430

Price: \$4.25

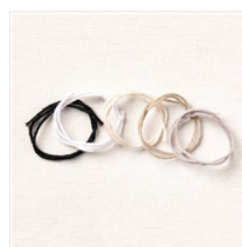
[Add to Cart](#)



2024-2026 In
Color™ Resin Dots
- 163389

Price: \$8.00

[Add to Cart](#)



Baker's Twine
Essentials Pack -
155475

Price: \$11.00

[Add to Cart](#)