

How to Build a Beautiful Birdhouse Birthday Card

Mary Fish
maryfish@stampinpretty.com
<http://stampinpretty.com>



CUT YOUR CARD STOCK – DIMENSIONS:

- Basic Black Card Stock:
 - Card Base – 4 1/4 x 11, scored at 5 1/2
 - Die-Cut Birdhouse Pieces- 4 1/4 x 5 1/2 (before die-cutting)
 - Die-Cut Envelope Flap – 5 3/4 x 4 1/4 (before die-cutting)
 - Piece Behind Entry Hole – 1 1/4 x 1 1/4
 - Perch – scraps
- Country Lace Designer Series Paper:
 - Stamped & Die-Cut Birdhouse – 4 1/4 x 4 1/2 (before die-cutting)
- Daffodil Delight Card Stock:
 - Layer – 4 1/4 x 3 1/2
 - Die-Cut Birdhouse Pieces – 3 1/2 x 2 1/2 (before die-cutting)
- Basic White Card Stock:
 - Layer – 3 3/4 x 5
 - Die-Cut Birdhouse Pieces -3 1/2 x 2 1/2 (before die-cutting)

How to Build a Beautiful Birdhouse Birthday Card

Mary Fish
maryfish@stampinpretty.com
<http://stampinpretty.com>

Stamped & Die-Cut Sentiment – 3 1/2 x 1 1/2 (before die-cutting)

Stamped & Die-Cut Bird – 2 1/2 x 2 (before die-cutting)



PROJECT TUTORIAL:

1. Begin by burnishing the fold of the Basic Black card base with a Bone Folder.
2. Adhere the Daffodil Delight layer to the center of the card base with Multipurpose Liquid Glue.
3. Adhere the Basic White layer to the card base with Stampin' Dimensionals.
4. Use a [Mini Misti](#) to stamp the sentiment, bird, and birdhouse (Country Birdhouse Stamp Set) in Tuxedo Black Memento Ink onto the Basic White and striped Designer Series Paper layers. Watch my [1 Minute to WOW video](#): The Magic of the Mini MISTI for a quick demonstration [here](#).
5. Use a [Stampin' Cut & Emboss Machine](#) (Standard or Mini) to crop the bird, birdhouse, and birdhouse hole with the coordinating Country Birdhouse die and the sentiment with the Happy Little Things die.
6. Color the bird with Light and Dark Daffodil Delight Stampin' Blends.
7. Crop the following with a [Stampin' Cut & Emboss Machine](#) (Standard) and the Country Birdhouse dies:
 - Basic Black – roof top, birdhouse base , two double leaves , curvy birdhouse pole, birdhouse perch
 - Daffodil Delight – roof accent, two flowers
 - Basic White – roof accent
8. Adhere the birdhouse pole to the card as shown with Multipurpose Liquid Glue.
9. Adhere the Basic Black layer behind the birdhouse opening with Multipurpose Liquid Glue.
10. Adhere the die-cut roof pieces and perch to the birdhouse as shown with Multipurpose Liquid Glue and the birdhouse to the card with Stampin' Dimensionals.
11. Adhere the flowers and leaves with Mini Glue Dots.

How to Build a Beautiful Birdhouse Birthday Card

Mary Fish
maryfish@stampinpretty.com
<http://stampinpretty.com>

- Adhere the base, bird and sentiment as shown with standard and Mini Stampin' Dimensionals.
- POP OF PERSONALITY!** Embellish the center of the flowers with one large and one small Smoky Slate pearl (Basic Gray & Smoky Slate Pearls).
- PERFECT POLISH!** Cover and adhere a 5 3/4 x 4 1/4 piece of Basic Black card stock to the envelope flap (add glue to the flap, not the card stock). Crop with the leaf die from Around the Bend Dies. Use Paper Snips to easily trim the very edges of the curve (die is just short) of the width of the envelope.

[CLICK FOR BLOG POST](#)

[CLICK TO SHOP](#)



Country Birdhouse Bundle (English) - 163401

Price: \$46.75

[Add to Cart](#)



Country Birdhouse Photopolymer Stamp Set (English) - 163395

Price: \$20.00

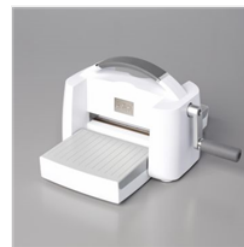
[Add to Cart](#)



Country Birdhouse Dies - 163400

Price: \$32.00

[Add to Cart](#)



Stampin' Cut & Emboss Machine - 149653

Price: \$130.00

[Add to Cart](#)



Multipurpose Liquid Glue - 110755

Price: \$6.00

[Add to Cart](#)



Stampin' Dimensionals - 104430

Price: \$4.25

[Add to Cart](#)



Paper Trimmer - 152392

Price: \$28.00

[Add to Cart](#)



Bone Folder - 102300

Price: \$8.00

[Add to Cart](#)



Basic White Medium Envelopes - 159236

Price: \$11.00

[Add to Cart](#)



Basic Black 8-1/2" X 11" Cardstock - 121045

Price: \$11.50

[Add to Cart](#)

How to Build a Beautiful Birdhouse Birthday Card

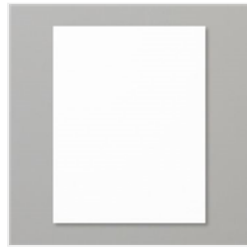
Mary Fish
maryfish@stampinpretty.com
<http://stampinpretty.com>



Daffodil Delight 8-1/2" X 11" Cardstock - 119683

Price: \$11.50

Add to Cart



Basic White 8-1/2" X 11" Cardstock - 159276

Price: \$13.00

Add to Cart



Country Lace 12" X 12" (30.5 X 30.5 Cm) Designer Series Paper - 163415

Price: \$12.50

Add to Cart



Tuxedo Black Memento Ink Pad - 132708

Price: \$8.00

Add to Cart



Daffodil Delight Stampin' Blends Combo Pack - 154883

Price: \$11.00

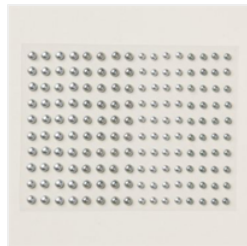
Add to Cart



Happy Little Things Dies - 163709

Price: \$12.00

Add to Cart



Basic Gray & Smoky Slate Pearls - 163416

Price: \$7.50

Add to Cart



Mini Glue Dots - 103683

Price: \$7.25

Add to Cart



Around The Bend Dies - 160649

Price: \$33.00

Add to Cart



Paper Snips Scissors - 103579

Price: \$12.00

Add to Cart



Clear Translucent Medium Envelopes - 102619

Price: \$7.50

Add to Cart