

A Wildly Flowering Fun Fold!

Mary Fish
maryfish@stampinpretty.com
<http://stampinpretty.com>


stampin' pretty
step-by-step tutorial



CUT YOUR CARD STOCK – DIMENSIONS:

- Pebbled Path Card Stock:
 - Card Base – 8 1/4 x 4 1/4, scored at 5 1/2 (side)
 - Top Panel – 4 1/4 x 3 1/4 (left-over from card base cut)
- Basic White Card Stock:
 - Card Interior – 5 1/4 x 4
 - Left Panel Layer – 2 1/4 x 4
 - Top Panel Layer – 4 x 3
 - Stamped & Die-Cut Sentiment –
- Wildly Flowering Designer Series Paper:
 - Left Panel Layer (Moody Mauve) – 2 1/4 x 3 3/4
 - Main Panel Layer (Wild Wheat Floral) – 3 3/4 x 2 3/4
 - Envelope Flap – 5 3/4 x 2 1/2

A Wildly Flowering Fun Fold!

Mary Fish

maryfish@stampinpretty.com

<http://stampinpretty.com>



PROJECT TUTORIAL:

1. Burnish the fold of the Pebbled Path fun fold card base with a Bone Folder.
2. Use a [Mini MISTI](#) to stamp the sentiments (Country Birdhouse stamp set) in Pebbled Path onto the coordinating Basic White layers. Watch my [1 Minute to WOW video](#): The Magic of the Mini MISTI for a quick demonstration [here](#).
3. Adhere all the Basic White layers to the coordinating Pebbled Path panels with Multipurpose Liquid Glue.
4. Adhere the Designer Series Paper layers to the coordinating Basic White layers as shown with Multipurpose Liquid Glue.
5. Adhere the top panel as shown to the left panel as shown with Multipurpose Liquid Glue. (TIP: Be sure to only add glue where the two panels meet and not over the opening).
6. Use your fingers to divide the Pebbled Path 2023-2025 In Color Jute Trim into three separate strands. Watch my Stampin' Pretty 1 Minute to WOW Video for tips on separating jute [here](#).
7. Wrap two of the three strands (save the other for a future project) around all layers as shown, securing with a bow.
8. Use a [Stampin' Cut & Emboss Machine](#) (Standard or Mini) to crop the "happy birthday" sentiment with the coordinating Country Birdhouse die.
9. Adhere as shown with Mini Stampin' Dimensionals.
10. **POP OF PERSONALITY!** Embellish with 3 Moody Mauve 2023 – 2025 In Color Opaque Sparkle Dots.
11. **PERFECT POLISH!** Adhere the 5 3/4 x 2 1/2 Designer Series Paper to the Basic White Medium envelope flap with Multipurpose Liquid Glue. Add glue to the flap first, not the Designer Series Paper.

[CLICK FOR BLOG POST](#)

[CLICK TO SHOP](#)

A Wildly Flowering Fun Fold!

Mary Fish

maryfish@stampinpretty.com

<http://stampinpretty.com>



Country Birdhouse Bundle (English) - 163401

Price: \$46.75

Add to Cart



Country Birdhouse Photopolymer Stamp Set (English) - 163395

Price: \$20.00

Add to Cart



Country Birdhouse Dies - 163400

Price: \$32.00

Add to Cart



Wildly Flowering 12" X 12" (30.5 X 30.5 Cm) Designer Series Paper - 163323

Price: \$12.50

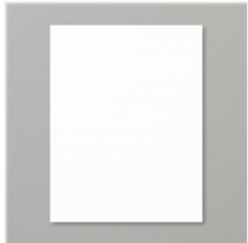
Add to Cart



Pebbled Path 8-1/2" X 11" Cardstock - 161722

Price: \$11.50

Add to Cart



Basic White 8-1/2" X 11" Cardstock - 159276

Price: \$13.00

Add to Cart



Basic White Medium Envelopes - 159236

Price: \$11.00

Add to Cart



Paper Trimmer - 152392

Price: \$28.00

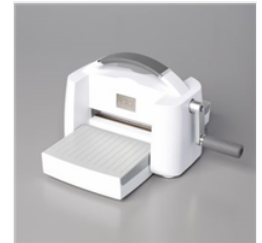
Add to Cart



Mini Stampin' Cut & Emboss Machine - 150673

Price: \$66.00

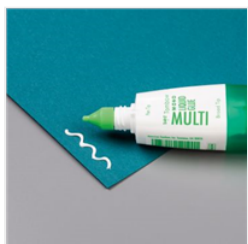
Add to Cart



Stampin' Cut & Emboss Machine - 149653

Price: \$130.00

Add to Cart



Multipurpose Liquid Glue - 110755

Price: \$6.00

Add to Cart



Mini Stampin' Dimensionals - 144108

Price: \$4.25

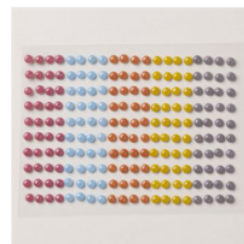
Add to Cart



Pebbled Path Classic Stampin' Pad - 161648

Price: \$9.00

Add to Cart



2023-2025 In Color™ Opaque Sparkle Dots - 163782

Price: \$8.00

Add to Cart



2023-2025 In Color Jute Trim - 161637

Price: \$8.00

Add to Cart