

# A Watercolor Wonder with the NEW Thoughtful Journey DSP!

Mary Fish  
[maryfish@stampinpretty.com](mailto:maryfish@stampinpretty.com)  
<http://stampinpretty.com>



## CUT YOUR CARD STOCK – DIMENSIONS:

- Basic Beige Card Stock:
  - Card Base – 4 1/4 x 11, scored at 5 1/2 (top)
  - Die-Cut Sentiment – 3 x 2 1/2 (before die-cutting)
- Mossy Meadow Card Stock:
  - Layer – 4 x 5 1/4
  - Die-Cut Label – 3 x 2 1/2 (before die-cutting)
- Petunia Pop Card Stock:
  - Layer – 3 3/4 x 5
- Thoughtful Journey Designer Series Paper:
  - Layer – 3 1/2 x 4 3/4
  - Envelope Flap – 5 3/4 x 2 1/2 (before die-cutting)

# A Watercolor Wonder with the NEW Thoughtful Journey DSP!

Mary Fish  
[maryfish@stampinpretty.com](mailto:maryfish@stampinpretty.com)  
<http://stampinpretty.com>



## PROJECT TUTORIAL:

1. Begin by burnishing the fold of the Basic Beige card base with a Bone Folder.
2. Adhere the Mossy Meadow layer to the card base with Multipurpose Liquid Glue.
3. Layer and adhere the Designer Series Paper to the Petunia Pop card stock together with Multipurpose Liquid Glue.
4. Double wrap with Linen Thread and secure with a bow.
5. Use a **Mini Misti** to stamp the sentiment (Unbounded Love Stamp Set) in Mossy Meadow Classic Ink onto the Basic Beige layer. Watch my [1 Minute to WOW video](#): The Magic of the Mini MISTI for a quick demonstration [here](#).
6. Use a **Stampin' Cut & Emboss Machine** (Standard) to crop the following with the Unbounded Love dies:
  - Sentiment – Coordinating Label Die
  - Mossy Meadow – Coordinating Stitched Label Die
7. Adhere the die-cuts together and to the card with Stampin' Dimensionals as shown.
8. **POP OF PERSONALITY!** Embellish with 2 Petunia Pop In Color Resin Dots.
9. **PERFECT POLISH!** Adhere the 5 3/4 x 2 1/2 Designer Series Paper to the Basic White Medium envelope flap with Multipurpose Liquid Glue. **IMPORTANT:** Add glue to the flap first, not the Designer Series Paper. Center and line up the Elegant Border edge die, tape to secure ([Post-It Tape](#)) and crop with a **Stampin' Cut & Emboss Machine** (Standard). Watch my Stampin' Pretty WOW Video [here](#).

# A Watercolor Wonder with the NEW Thoughtful Journey DSP!

Mary Fish  
[maryfish@stampinpretty.com](mailto:maryfish@stampinpretty.com)  
<http://stampinpretty.com>

[CLICK FOR BLOG POST](#)

[CLICK TO SHOP](#)



Unbounded Love Bundle (English) - 163384

Price: \$54.75

[Add to Cart](#)



Unbounded Love Photopolymer Stamp Set (English) - 163378

Price: \$25.00

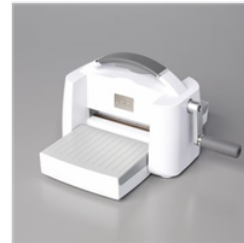
[Add to Cart](#)



Unbounded Love Dies - 163383

Price: \$36.00

[Add to Cart](#)



Stampin' Cut & Emboss Machine - 149653

Price: \$130.00

[Add to Cart](#)



Multipurpose Liquid Glue - 110755

Price: \$6.00

[Add to Cart](#)



Stampin' Dimensionals - 104430

Price: \$4.25

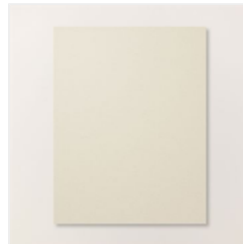
[Add to Cart](#)



Thoughtful Journey 6" X 6" (15.2 X 15.2 Cm) Designer Series Paper - 163303

Price: \$12.50

[Add to Cart](#)



Basic Beige 8-1/2" X 11" Cardstock - 164511

Price: \$11.50

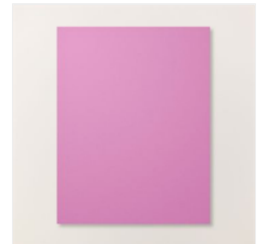
[Add to Cart](#)



Mossy Meadow 8-1/2" X 11" Cardstock - 133676

Price: \$11.50

[Add to Cart](#)



Petunia Pop 8-1/2" X 11" Cardstock - 163801

Price: \$11.50

[Add to Cart](#)

# A Watercolor Wonder with the NEW Thoughtful Journey DSP!

Mary Fish  
[maryfish@stampinpretty.com](mailto:maryfish@stampinpretty.com)  
<http://stampinpretty.com>



Paper Trimmer -  
152392

Price: \$28.00

Add to Cart



Bone Folder -  
102300

Price: \$8.00

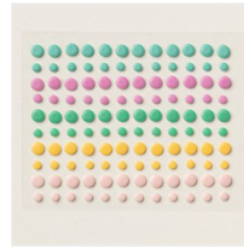
Add to Cart



Mossy Meadow  
Classic Stampin'  
Pad - 147111

Price: \$9.00

Add to Cart



2024-2026 In  
Color™ Resin Dots  
- 163389

Price: \$8.00

Add to Cart



Basic White  
Medium Envelopes  
- 159236

Price: \$11.00

Add to Cart



Elegant Borders  
Dies - 161593

Price: \$32.00

Add to Cart



Linen Thread -  
104199

Price: \$5.00

Add to Cart