

Simple & Chic Basic Beige Thank You Card

Mary Fish
maryfish@stampinpretty.com
<http://stampinpretty.com>


stampin' pretty
step-by-step tutorial



CUT YOUR CARD STOCK - DIMENSIONS:

- Basic Beige Card Stock:
Card Base – 4 1/8 x 11, scored at 5 1/2 (top) (NOTE: the card is 4 1/8 wide, not 4 1/4)
Die-Cut Thanks - 1 1/4 x 3 3/4 (before die-cutting)
- Basic White Card Stock:
Die-Cut Layer - 4 1/8 x 5 1/2
Strip - 1 1/4 x 3 3/4

Simple & Chic Basic Beige Thank You Card

Mary Fish

maryfish@stampinpretty.com

<http://stampinpretty.com>



PROJECT TUTORIAL:

1. Begin by burnishing the fold of the Basic Beige card base with a Bone Folder.
2. Use a [Stampin' Cut & Emboss Machine](#) (Standard) to crop the Basic White layer with the Gorgeous Garden die.
3. Adhere the die-cut layer to the card base with dabs Multipurpose Liquid Glue.
4. Wrap the Basic White strip with Linen Thread, securing with a bow as shown.
5. Adhere to the card with Stampin' Dimensionals.
6. Use a [Stampin' Cut & Emboss Machine](#) (Standard or Mini) to crop the Basic Beige layer with the Thanks & Beyond die.
7. Adhere to the card with Mini Stampin' Dimensionals.

[CLICK FOR BLOG POST](#)

[CLICK TO SHOP](#)

Simple & Chic Basic Beige Thank You Card

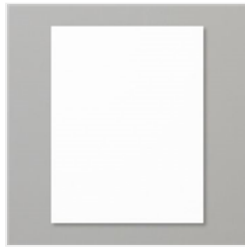
Mary Fish
maryfish@stampinpretty.com
<http://stampinpretty.com>



Thanks & Beyond Dies - 164397

Price: \$12.00

Add to Cart



Basic White 8-1/2" X 11" Thick Cardstock - 159229

Price: \$9.00

Add to Cart



Paper Trimmer - 152392

Price: \$26.00

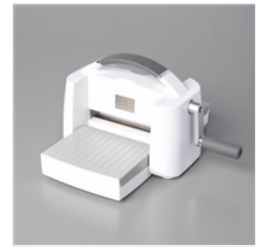
Add to Cart



Bone Folder - 102300

Price: \$7.00

Add to Cart



Stampin' Cut & Emboss Machine - 149653

Price: \$128.00

Add to Cart



Gorgeous Garden Dies - 161283

Sale: \$29.40

Price: \$42.00

Add to Cart



Multipurpose Liquid Glue - 110755

Price: \$5.50

Add to Cart



Stampin' Dimensionals - 104430

Price: \$4.25

Add to Cart



Basic White Medium Envelopes - 159236

Price: \$8.50

Add to Cart



Mini Stampin' Dimensionals - 144108

Price: \$4.25

Add to Cart



Linen Thread - 104199

Price: \$5.00

Add to Cart