

# 1 Minute to WOW! Video - Shutter Card Technique

Mary Fish  
[maryfish@stampinpretty.com](mailto:maryfish@stampinpretty.com)  
<http://stampinpretty.com>



## CUT YOUR CARD STOCK - DIMENSIONS:

- Basic White Thick Card Stock:  
Card Base – 4 1/4 x 11, scored at 5 1/2 (top)
- Gold Foil:  
Layer – 4 x 5 1/4  
Strips (qty 3)- 1/4 x 4 3/4 (before snipping)
- Forever Love Specialty Designer Series Paper:  
Layer – 3 3/4 x 5  
Envelope Flap – 5 3/4 x 2 1/4 (before die-cutting)
- Basic White Card Stock:  
Die-Cut Stitched Square – 2 1/4 x 2 1/4 (before die-cutting)  
Die-Cut Sentiment – 2 x 2 (before die-cutting)

# 1 Minute to WOW! Video - Shutter Card Technique

Mary Fish

[maryfish@stampinpretty.com](mailto:maryfish@stampinpretty.com)

<http://stampinpretty.com>



## PROJECT TUTORIAL:

1. Begin by burnishing the fold of the Basic White Thick card base with a Bone Folder.
2. Adhere the Gold Foil layer to the card base with Stampin' Dimensionals.
3. Use a [Stampin' Cut & Emboss Machine](#) (Standard or Mini) to crop the Basic White stock using the Stylish Shapes 1 7/8 stitched square die.
4. Adhere to the Designer Series Paper layer with Multipurpose Liquid Glue.
5. TIP: I used my [Victor Easy Read Ruler](#) to measure 1/2 from the top and two sides for perfect placement! View all things that I keep [ON MY DESK!](#)
6. Use Paper Snips to snip one of the Gold Foil strips in half.
7. Adhere all Gold Foil strips around the stitched square die-cut as shown with Multipurpose Liquid Glue. Watch my 1 Minute to WOW! Video: [Shutter Card Technique](#)
8. Use Paper Snips to snip the edges of the strips flush with the edges of the Designer Series Paper.
9. Adhere the Designer Series Paper layer to the Gold Foil layer with Multipurpose Liquid Glue.
10. Double wrap with gold Simply Elegant Trim, securing with a bow as shown.
11. Adhere to the card base with Stampin' Dimensionals.

# 1 Minute to WOW! Video - Shutter Card Technique

Mary Fish

[maryfish@stampinpretty.com](mailto:maryfish@stampinpretty.com)

<http://stampinpretty.com>



12. Use a Clear Block C or **Mini Misti** to stamp the sentiment (Charming Sentiments) in Pretty Peacock Classic Ink onto the Basic White layer.
13. Crop with a **Stampin' Cut & Emboss Machine** (Standard or Mini) and the coordinating Sentiment Silhouettes die.
14. Adhere as shown with Mini Stampin' Dimensionals.
15. **POP OF PERSONALITY!** Embellish with three small Pretty Peacock Tinsel Gems Four Pack.
16. **PERFECT POLISH!** Adhere the 5 3/4 x 2 1/4 A Little Latte Designer Series Paper to the Basic White Medium envelope flap with Multipurpose Liquid Glue. **IMPORTANT:** Add glue to the flap first, not the Designer Series Paper. Center and line up the Basic Borders curved edge die, tape to secure (**Post-It Tape**) and crop with a **Stampin' Cut & Emboss Machine** (Standard). Watch my Stampin' Pretty WOW Video [here](#).

[CLICK FOR BLOG POST](#)

[CLICK TO SHOP](#)

# 1 Minute to WOW! Video - Shutter Card Technique

Mary Fish

[maryfish@stampinpretty.com](mailto:maryfish@stampinpretty.com)

<http://stampinpretty.com>



Charming Sentiments Photopolymer Stamp Set (English) - 159985

Price: \$23.00

Add to Cart



Sentiment Silhouettes Dies - 158733

**Sale: \$17.50**

Price: \$35.00

Add to Cart



Forever Love 12" X 12" (30.5 X 30.5 Cm) Specialty Designer Series Paper - 162573

Price: \$16.50

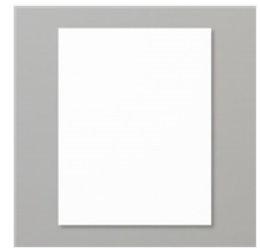
Add to Cart



Gold Foil Sheets - 132622

Price: \$5.00

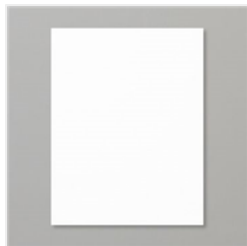
Add to Cart



Basic White 8-1/2" X 11" Thick Cardstock - 159229

Price: \$9.00

Add to Cart



Basic White 8-1/2" X 11" Cardstock - 159276

Price: \$10.50

Add to Cart



Paper Trimmer - 152392

Price: \$26.00

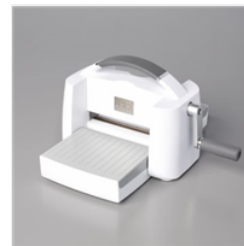
Add to Cart



Bone Folder - 102300

Price: \$7.00

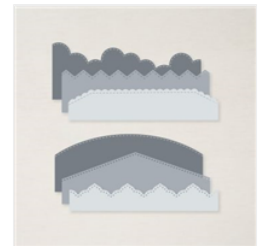
Add to Cart



Stampin' Cut & Emboss Machine - 149653

Price: \$128.00

Add to Cart



Basic Borders Dies - 155558

**Sale: \$17.40**

Price: \$29.00

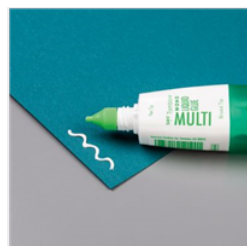
Add to Cart



Basic White Medium Envelopes - 159236

Price: \$8.50

Add to Cart



Multipurpose Liquid Glue - 110755

Price: \$5.50

Add to Cart



Stampin' Dimensionals - 104430

Price: \$4.25

Add to Cart



Pretty Peacock Classic Stampin' Pad - 150083

Price: \$9.00

Add to Cart



Clear Block C - 118486

Price: \$8.00

Add to Cart

# 1 Minute to WOW! Video - Shutter Card Technique

Mary Fish  
[maryfish@stampinpretty.com](mailto:maryfish@stampinpretty.com)  
<http://stampinpretty.com>



Simply Elegant  
Trim - 155766

Price: \$7.50

Add to Cart



Petal Pink & Pretty  
Peacock Foiled  
Gems - 162587

Price: \$8.00

Add to Cart