

# Groovy Kind of Love Card

Mary Fish  
[maryfish@stampinpretty.com](mailto:maryfish@stampinpretty.com)  
<http://stampinpretty.com>

  
stampin' pretty  
step-by-step tutorial



## CUT YOUR CARD STOCK:

- Very Vanilla Thick Card Stock:  
Card Base – 4 1/4 x 11, scored at 5 1/2
- Very Vanilla Card Stock:  
Layer – 4 x 5 1/4  
Layer Below Die-Cut Layers – 3 1/8 x 4 5/8  
Die-Cut “Love” – 2 1/2 x 1 1/2 (before die-cutting) – **Adhered to an Adhesive Sheet**
- Petal Pink, Early Espresso, Coastal Cabana and Very Vanilla Card Stock:  
Die-Cut Layer (one of each color)- 3 1/2 x 5 (before die-cutting)
- Early Espresso Card Stock:  
Die-Cut “Love” Base – 2 3/4 x 2 1/2 (before die-cutting)

# Groovy Kind of Love Card

Mary Fish

[maryfish@stampinpretty.com](mailto:maryfish@stampinpretty.com)

<http://stampinpretty.com>



## PROJECT TUTORIAL:

1. Begin by burnishing the fold of the Very Vanilla Thick card base with a Bone Folder.
2. Adhere the largest 4 x 5 1/4 Very Vanilla layer to the card base with Stampin' Dimensionals.
3. Use the Patchwork Pieces die and a [Stampin' Cut & Emboss Machine](#) (Standard) to crop a layer of Petal Pink, Early Espresso, Coastal Cabana and Very Vanilla.
4. Adhere the die-cut pieces as shown (you will have extra to use on other cards) to the 3 1/8 x 4 5/8 Very Vanilla layer with Multipurpose Liquid Glue.
5. Adhere to the card with Stampin' Dimensionals.
6. Crop the Very Vanilla (adhered to an Adhesive Sheet) and the Early Espresso pieces with a [Stampin' Cut & Emboss Machine](#) (Standard or Mini) and the Love For You dies.
7. Remove the Adhesive Sheet backing from the Very Vanilla die-cut and adhere to the Early Espresso die-cut.
8. Adhere to the card with Stampin' Dimensionals.
9. **POP OF PERSONALITY!** Embellish with Petal Pink Rainbow Adhesive-Backed Dots as shown.

[CLICK FOR BLOG POST](#)

[CLICK TO SHOP](#)

# Groovy Kind of Love Card

Mary Fish

[maryfish@stampinpretty.com](mailto:maryfish@stampinpretty.com)

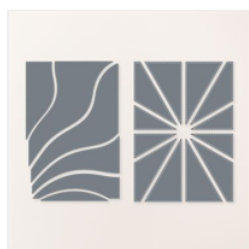
<http://stampinpretty.com>



Love For You Dies  
(English) - 160403

Price: \$32.00

Add to Cart



Patchwork Pieces  
Dies - 161592

Price: \$35.00

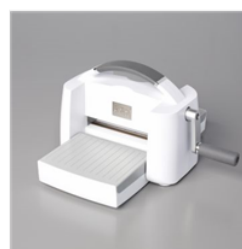
Add to Cart



Paper Trimmer -  
152392

Price: \$26.00

Add to Cart



Stampin' Cut &  
Emboss Machine -  
149653

Price: \$128.00

Add to Cart



Mini Stampin' Cut  
& Emboss  
Machine - 150673

Price: \$66.00

Add to Cart



Stampin'  
Dimensionals -  
104430

Price: \$4.25

Add to Cart



Multipurpose  
Liquid Glue -  
110755

Price: \$5.50

Add to Cart



Very Vanilla 8-1/2"  
X 11" Thick  
Cardstock -  
144237

Price: \$9.00

Add to Cart



Very Vanilla 8-1/2"  
X 11" Cardstock -  
101650

Price: \$10.50

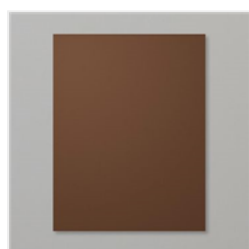
Add to Cart



Petal Pink 8-1/2" X  
11" Cardstock -  
146985

Price: \$10.00

Add to Cart



Early Espresso 8-  
1/2" X 11"  
Cardstock -  
119686

Price: \$10.00

Add to Cart



Coastal Cabana 8-  
1/2" X 11"  
Cardstock -  
131297

Price: \$10.00

Add to Cart



Adhesive Sheets -  
152334

Price: \$11.50

Add to Cart