

# A Quick Thanks with Tropical Leaf!

Mary Fish  
[maryfish@stampinpretty.com](mailto:maryfish@stampinpretty.com)  
<http://stampinpretty.com>

  
stampin' pretty  
step-by-step tutorial



## CUT YOUR CARD STOCK:

- Basic White Thick Card Stock:  
Card Base – 4 1/4 x 11 – scored at 5 1/2
- Basic Black Card Stock:  
Layer – 4 1/4 x 3  
Punched Circle – 3 x 2 1/4 (before punching)
- Lemon Lime Twist Card Stock:  
Layer – 4 3/4 x 3 1/2
- Basic White Card Stock:  
Punched /Stamped Leaves – 4 x 2 1/2 (before punching)

# A Quick Thanks with Tropical Leaf!

Mary Fish  
[maryfish@stampinpretty.com](mailto:maryfish@stampinpretty.com)  
<http://stampinpretty.com>



## PROJECT TUTORIAL:

1. Burnish the folds of the Basic White Thick card base with a Bone Folder.
2. Adhere the Lemon Lime Twist layer to the card base with Stampin' Dimensionals.
3. Wrap the Basic Black layer with white Baker's Twine Essentials, securing with a bow.
4. Adhere to the card with Stampin' Dimensionals.
5. Use Clear Block D to stamp the large leaves (Tropical Leaf Stamp Set), one in Granny Apple Green Classic Ink and the other in Lemon Lime Twist onto the Basic White layer.
6. Stamp the veins in Tuxedo Black Memento ink onto the leaves as shown.
7. Crop with the coordinating Tropical Leaf Punch.
8. Rub the 3 x 2 1/4 piece of Basic Black card stock with an Embossing Buddy from the Embossing Additions Tool Kit.
9. Use Clear Block C to stamp the sentiment (Tropical Leaf Stamp Set) in Versamark Ink onto the Basic Black layer. Cover with white Basics Embossing Powder. Set with a Heat Tool.
10. Crop with the 2 Circle Punch.
11. Adhere all pieces to the card as shown with Multipurpose Liquid Glue and Stampin' Dimensionals.
12. **POP OF PERSONALITY!** Embellish with Lemon Lime Twist Tinsel Gems (Four-Pack).

Mary Fish  
Independent  
Stampin' UP! Demonstrator

[CLICK FOR BLOG POST](#)

[CLICK TO SHOP](#)

# A Quick Thanks with Tropical Leaf!

Mary Fish

[maryfish@stampinpretty.com](mailto:maryfish@stampinpretty.com)

<http://stampinpretty.com>



Tropical Leaf Bundle (English) - 161249

Price: \$37.75

Add to Cart



Tropical Leaf Photopolymer Stamp Set (English) - 161242

Price: \$20.00

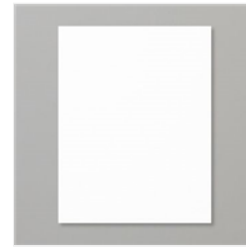
Add to Cart



Tropical Leaf Punch - 161248

Price: \$22.00

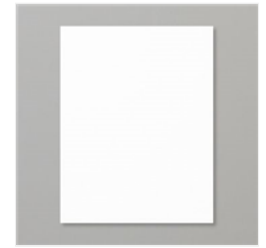
Add to Cart



Basic White 8-1/2" X 11" Thick Cardstock - 159229

Price: \$9.00

Add to Cart



Basic White 8-1/2" X 11" Cardstock - 159276

Price: \$10.50

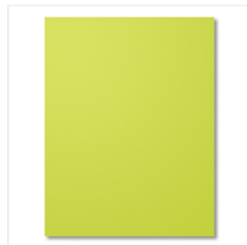
Add to Cart



Basic Black 8-1/2" X 11" Cardstock - 121045

Price: \$10.00

Add to Cart



Lemon Lime Twist 8-1/2" X 11" Cardstock - 144245

Price: \$10.00

Add to Cart



Clear Block C - 118486

Price: \$8.00

Add to Cart



Clear Block D - 118485

Price: \$9.50

Add to Cart



Granny Apple Green Classic Stampin' Pad - 147095

Price: \$9.00

Add to Cart



Lemon Lime Twist Classic Stampin' Pad - 147145

Price: \$9.00

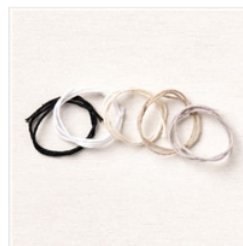
Add to Cart



Tuxedo Black Memento Ink Pad - 132708

Price: \$6.50

Add to Cart



Baker's Twine Essentials Pack - 155475

Price: \$11.00

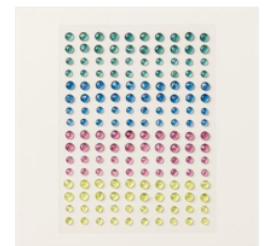
Add to Cart



Stampin' Dimensionals - 104430

Price: \$4.25

Add to Cart



Tinsel Gems Four-Pack - 161623

Price: \$8.00

Add to Cart

# A Quick Thanks with Tropical Leaf!

Mary Fish  
[maryfish@stampinpretty.com](mailto:maryfish@stampinpretty.com)  
<http://stampinpretty.com>



VersaMark Pad -  
102283

Price: \$9.50

Add to Cart



Embossing  
Additions Tool Kit -  
159971

Price: \$27.00

Add to Cart



Basics Embossing  
Powders - 155554

Price: \$18.00

Add to Cart