

# Wanted to Say Dies for a Darling Birthday Card!

Mary Fish  
[maryfish@stampinpretty.com](mailto:maryfish@stampinpretty.com)  
<http://stampinpretty.com>

  
stampin' pretty  
step-by-step tutorial



## CUT YOUR CARD STOCK:

- Basic White Thick Card Stock:  
Card Base – 5 1/2 x 8 1/2, scored at 4 1/4
- Melon Mambo Card Stock:  
Layers – 5 1/4 x 4, 5 x 1 1/2  
Die-cut Sentiment – 3 1/4 x 2 (before die-cutting)
- Basic White Card Stock:  
Die-Cut Layer – 4 x 2 3/4 (before die-cutting)  
Die-cut Sentiment- 3 1/4 x 2 (before die-cutting)
- Merry Bold & Bright Designer Series Paper:  
Layer – 5 x 3 3/4  
Envelope Flap – 5 3/4 x 2 1/4

# Wanted to Say Dies for a Darling Birthday Card!

Mary Fish

[maryfish@stampinpretty.com](mailto:maryfish@stampinpretty.com)

<http://stampinpretty.com>



## PROJECT TUTORIAL:

1. Begin by burnishing the fold of the Basic White Thick card base with a Bone Folder.
2. Adhere the Designer Series Paper to the large Melon Mambo layer with Multipurpose Liquid Glue.
3. Adhere the Melon Mambo card stock strip to the layer as shown with Multipurpose Liquid Glue.
4. Double wrap with white Baker's Twine Essentials, securing with a bow on the left.
5. Adhere to the card base with Stampin' Dimensionals.
6. Crop the 4 x 2 3/4 Basic White layer with a [Stampin' Cut & Emboss Machine](#) (Standard or Mini) and the 3 3/4 x 2 1/4 Scalloped Contours Die.
7. Adhere as shown with Stampin' Dimensionals.
8. Adhere the 3 1/4 x 2 Melon Mambo layer to an Adhesive Sheet.
9. Crop the Melon Mambo and Basic White layers with a [Stampin' Cut & Emboss Machine](#) (Standard or Mini) and the "Happy Birthday" Wanted to Say dies.
10. Remove the Adhesive Sheet protective backing from the Melon Mambo die-cut and adhere to the Basic White die-cut.
11. Adhere to the card with Stampin' Dimensionals.
12. **POP OF PERSONALITY!** Embellish with white Classic Matte Dots.
13. **PERFECT POLISH!** Use Multipurpose Liquid Glue to adhere the Designer Series Paper to the outside flap of a Basic White Medium Envelope flap.

[CLICK FOR BLOG POST](#)

[CLICK TO SHOP](#)

# Wanted to Say Dies for a Darling Birthday Card!

Mary Fish

[maryfish@stampinpretty.com](mailto:maryfish@stampinpretty.com)

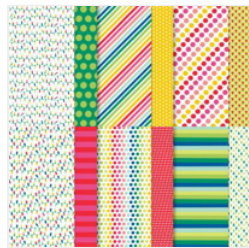
<http://stampinpretty.com>



Wanted To Say Dies - 161594

Price: \$39.00

Add to Cart



Merry Bold & Bright 12" X 12" (30.5 X 30.5 Cm) Designer Series Paper - 161945

Price: \$12.50

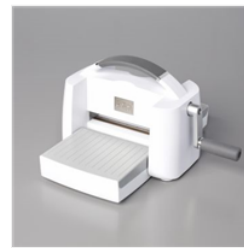
Add to Cart



Paper Trimmer - 152392

Price: \$26.00

Add to Cart



Stampin' Cut & Emboss Machine - 149653

Price: \$128.00

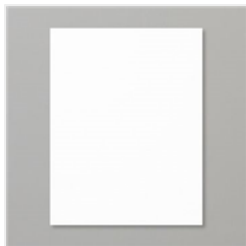
Add to Cart



Mini Stampin' Cut & Emboss Machine - 150673

Price: \$66.00

Add to Cart



Basic White 8-1/2" X 11" Thick Cardstock - 159229

Price: \$9.00

Add to Cart



Basic White 8-1/2" X 11" Cardstock - 159276

Price: \$10.50

Add to Cart



Melon Mambo 8-1/2" X 11" Cardstock - 115320

Price: \$10.00

Add to Cart



Stampin' Dimensionals - 104430

Price: \$4.25

Add to Cart



Multipurpose Liquid Glue - 110755

Price: \$5.50

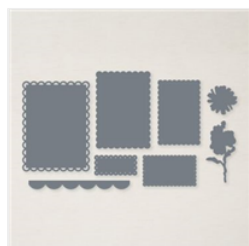
Add to Cart



Baker's Twine Essentials Pack - 155475

Price: \$11.00

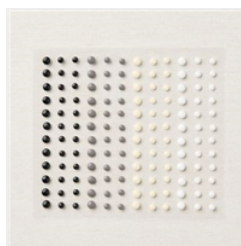
Add to Cart



Scalloped Contours Dies - 155560

Price: \$35.00

Add to Cart



Classic Matte Dots - 158146

Price: \$7.00

Add to Cart



Adhesive Sheets - 152334

Price: \$11.50

Add to Cart



Basic White Medium Envelopes - 159236

Price: \$8.50

Add to Cart