

How to Build the Merriest Tree!

Mary Fish
maryfish@stampinpretty.com
<http://stampinpretty.com>


stampin' pretty
step-by-step tutorial



CUT YOUR CARD STOCK:

- Pecan Pie Card Stock:
Card Base – 4 1/4 x 11, scored at 5 1/2
- Basic White Card Stock:
Layer & Die-Cuts – 3 3/2 x 5 1/4 (Qty 3)
Sentiment – 2 3/4 x 3/4
- A Walk in the Forest Designer Series Paper
Layer – 4 x 5 1/4
Envelope Flap – 5 3/4 x 2 1/4

How to Build the Merriest Tree!

Mary Fish

maryfish@stampinpretty.com

<http://stampinpretty.com>



PROJECT TUTORIAL:

1. Begin by burnishing the fold of the Pecan Pie card base with a Bone Folder.
2. Layer and adhere a Basic White layer to the Designer Series Paper together and to the card base with Multipurpose Liquid Glue.
3. Use a Stampin' Cut & Emboss Machine (Standard or Mini) and the Merriest Tree dies to crop a full tree from a Basic White layer. (This will be your canvas to build the layered tree).
4. Use a Clear Block E to stamp the full tree image in Granny Apple Green Classic Ink and the tree accents in Old Olive Classic Ink onto a Basic White layer.
5. Crop the tree sections with the coordinating Merriest Tree dies, starting with the top of the tree (smallest die) first, working your way down to the bottom.
6. **NOTE:** Your dies will go beyond the image you are cutting. This saves on ink and card stock.
7. Starting with the bottom die-cut, adhere the tree canvas (created in step 3) with Stampin' Dimensionals on the bottom half and Multipurpose Liquid Glue on the top edge. Continue this process until the top piece, which is adhered with a Stampin' Dimensional.

How to Build the Merriest Tree!

Mary Fish

maryfish@stampinpretty.com

<http://stampinpretty.com>



8. Use a Clear Block A to stamp the tree trunk in Pecan Pie Classic Ink and the star in Daffodil Delight Classic Ink onto scraps of Basic White card stock.
9. Crop with a Stampin' Cut & Emboss Machine (Standard or Mini) and the coordinating Merriest Tree dies.
10. Adhere the tree trunk with snipped-to-size Stampin' Dimensionals and star with Multipurpose Liquid Glue.
11. Use a Clear Block G to stamp the sentiment (Merriest Trees Stamp Set) in Balmy Blue Classic Ink onto the Basic White Sentiment piece.
12. Adhere as shown with Stampin' Dimensionals.
13. Tie a bow of white Baker's Twine Essentials and adhere tucked under the sentiment as shown with a Mini Glue Dot.
14. **POP OF PERSONALITY!** Embellish the tree with Old Olive Ombre Matte Decorative Dots.

Mary Fish
Independent
Stampin' UP! Demonstrator

[CLICK FOR BLOG POST](#)

[CLICK TO SHOP](#)

How to Build the Merriest Tree!

Mary Fish

maryfish@stampinpretty.com

<http://stampinpretty.com>



Merriest Trees Bundle (English) - 162048

Price: \$55.75

[Add to Cart](#)



Merriest Trees Photopolymer Stamp Set (English) - 162043

Price: \$25.00

[Add to Cart](#)



Merriest Trees Dies - 162047

Price: \$37.00

[Add to Cart](#)



Pecan Pie 8-1/2" X 11" Cardstock - 161717

Price: \$10.00

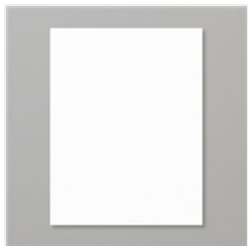
[Add to Cart](#)



A Walk In The Forest 12" X 12" (30.5 X 30.5 Cm) Designer Series Paper - 162377

Price: \$12.50

[Add to Cart](#)



Basic White 8-1/2" X 11" Cardstock - 159276

Price: \$10.50

[Add to Cart](#)



Granny Apple Green Classic Stampin' Pad - 147095

Price: \$9.00

[Add to Cart](#)



Old Olive Classic Stampin' Pad - 147090

Price: \$9.00

[Add to Cart](#)



Balmy Blue Classic Stampin' Pad - 147105

Price: \$9.00

[Add to Cart](#)



Stampin' Dimensionals - 104430

Price: \$4.25

[Add to Cart](#)



Mini Stampin' Dimensionals - 144108

Price: \$4.25

[Add to Cart](#)



Paper Trimmer - 152392

Price: \$26.00

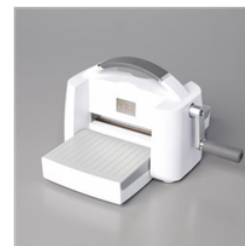
[Add to Cart](#)



Mini Stampin' Cut & Emboss Machine - 150673

Price: \$66.00

[Add to Cart](#)



Stampin' Cut & Emboss Machine - 149653

Price: \$128.00

[Add to Cart](#)



Baker's Twine Essentials Pack - 155475

Price: \$11.00

[Add to Cart](#)

How to Build the Merriest Tree!

Mary Fish

maryfish@stampinpretty.com

<http://stampinpretty.com>



Ombre Matte
Decorative Dots -
161448

Price: \$8.00

Add to Cart



Clear Block E -
118484

Price: \$13.00

Add to Cart



Clear Block A -
118487

Price: \$5.00

Add to Cart



Clear Block G -
118489

Price: \$5.50

Add to Cart



Basic White
Medium Envelopes
- 159236

Price: \$8.50

Add to Cart



Multipurpose
Liquid Glue -
110755

Price: \$5.50

Add to Cart