

# A Get Well Card with Garden Walk Flair

Mary Fish  
[maryfish@stampinpretty.com](mailto:maryfish@stampinpretty.com)  
<http://stampinpretty.com>



## CUT YOUR CARD STOCK:

- Very Vanilla Thick Card Stock:
  - Card Base – 4 1/4 x 11, scored at 5 1/2
  - Die-Cut Layer – 3 1/4 x 2 1/4 (before die-cutting)
- Mossy Meadow Card Stock:
  - Layers – 4 x 5 1/4, 3 x 5
  - Die-Cut Sentiment – 3 x 2 (before die-cutting)
- Garden Walk Designer Series Paper:
  - Layers – 3 3/4 x 5, 2 3/4 x 5
  - Envelope Flap – 5 3/4 x 2 1/4

# A Get Well Card with Garden Walk Flair

Mary Fish

[maryfish@stampinpretty.com](mailto:maryfish@stampinpretty.com)

<http://stampinpretty.com>



## PROJECT TUTORIAL:

1. Begin by burnishing the fold of the Very Vanilla Thick card base with a Bone Folder.
2. Layer and adhere the both Designer Series Paper layers to their respective Mossy Meadow layer together with Multipurpose Liquid Glue.
3. Wrap the larger layer with Calypso Coral 3/16 Braided Linen Trim, securing on the left with a bow.
4. Adhere to the card base with Stampin' Dimensionals.
5. Adhere to the smaller layer to the center of the card as shown with Stampin' Dimensionals.
6. Crop the Very Vanilla layer with a [Stampin' Cut & Emboss Machine](#) (Standard or Mini) and the larger "feel better soon" Wanted to Say die.
7. Adhere to the card with Mini Stampin' Dimensionals.
8. Adhere the Mossy Meadow layer to an Adhesive Sheet, then crop with a [Stampin' Cut & Emboss Machine](#) (Standard or Mini) and the detailed "feel better soon" Wanted to Say die.
9. Remove the adhesive backing and adhere to the Very Vanilla die-cut layer.
10. **POP OF PERSONALITY!** Embellish with Calypso Coral Iridescent Pastel Gems.
11. **PERFECT POLISH!** Use Multipurpose Liquid Glue to adhere the Designer Series Paper to the outside flap of a Very Vanilla Medium Envelope flap.

Mary Fish

Independent  
Stampin' UP! Demonstrator

[CLICK FOR BLOG POST](#)

[CLICK TO SHOP](#)

# A Get Well Card with Garden Walk Flair

Mary Fish

[maryfish@stampinpretty.com](mailto:maryfish@stampinpretty.com)

<http://stampinpretty.com>



Wanted To Say  
Dies - 161594

Price: \$39.00

Add to Cart



Paper Trimmer -  
152392

Price: \$26.00

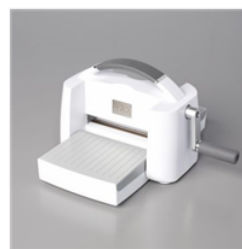
Add to Cart



Mini Stampin' Cut  
& Emboss  
Machine - 150673

Price: \$66.00

Add to Cart



Stampin' Cut &  
Emboss Machine -  
149653

Price: \$128.00

Add to Cart



Iridescent Pastel  
Gems - 160429

Price: \$8.00

Add to Cart



Calypso Coral  
3/16" (4.8 Mm)  
Braided Linen Trim  
- 162239

Price: \$8.00

Add to Cart



Garden Walk 6" X  
6" (15.2 X 15.2  
Cm) Designer  
Series Paper -  
162227

Price: \$12.50

Add to Cart



Very Vanilla 8-1/2"  
X 11" Cardstock -  
101650

Price: \$10.50

Add to Cart



Very Vanilla 8-1/2"  
X 11" Thick  
Cardstock -  
144237

Price: \$9.00

Add to Cart



Mossy Meadow 8-  
1/2" X 11"  
Cardstock -  
133676

Price: \$10.00

Add to Cart



Very Vanilla  
Medium Envelopes  
- 107300

Price: \$8.50

Add to Cart



Adhesive Sheets -  
152334

Price: \$11.50

Add to Cart



Multipurpose  
Liquid Glue -  
110755

Price: \$5.50

Add to Cart



Stampin'  
Dimensionals -  
104430

Price: \$4.25

Add to Cart



Mini Stampin'  
Dimensionals -  
144108

Price: \$4.25

Add to Cart