

The Stars are Brightly Shining with O Holy Night!

Mary Fish
maryfish@stampinpretty.com
<http://stampinpretty.com>


stampin' pretty
step-by-step tutorial



CUT YOUR CARD STOCK:

- Basic White Thick Card Stock:
Card Base – 4 1/4 x 11, scored at 5 1/2
- Night of Navy Card Stock:
Layer – 4 x 5 1/4
- Basic Black Card Stock:
Die-Cut Scene – 4 1/4 x 5 1/2 (before die-cutting)
- Basic White Card Stock:
Sentiment – 2 3/4 x 2 3/4 (before punching)
Die-Cut Star – 1 3/4 x 1 3/4 (before die-cutting)
- Oh Holy Night Designer Series Paper:
Layer – 3 3/4 x 5
Envelope Flap – 5 3/4 x 2 1/4

The Stars are Brightly Shining with O Holy Night!

Mary Fish

maryfish@stampinpretty.com

<http://stampinpretty.com>



PROJECT TUTORIAL:

1. Begin by burnishing the fold of the Basic White card base with a Bone Folder.
2. Adhere the Designer Series Paper to the Night of Navy layer together with Multipurpose Liquid Glue and to the card with Stampin' Dimensionals.
3. Use a Clear Block D to stamp the sentiment (Night Divine Stamp Set) in Night of Navy Classic Ink onto the Basic White layer.
4. Crop with the 2 3/8 Circle Punch, leaving the sentiment closet to an edge (rather than centered).
5. Crop the Basic Black layer with a [Stampin' Cut & Emboss Machine](#) (Standard or Mini) and Night Divine Dies.
6. Adhere the card as shown with snipped-to-size Stampin' Dimensionals.
7. Use a Paper Trimmer to cut 5/8 off the top of the punched sentiment.
8. Adhere to the card as shown with Multipurpose Liquid Glue.
9. Crop the Basic White layer with a [Stampin' Cut & Emboss Machine](#) (Standard or Mini) and 1 1/2 (approx) Stars at Night Die.
10. Adhere to the card as shown with a Mini Stampin' Dimensionals.
11. **POP OF PERSONALITY!** Embellish with Rhinestone Basic Jewels.
12. **PERFECT POLISH!** Use Multipurpose Liquid Glue to adhere the Designer Series Paper to the outside flap of a Basic White Medium Envelope.

[CLICK FOR BLOG POST](#)

[CLICK TO SHOP](#)

The Stars are Brightly Shining with O Holy Night!

Mary Fish

maryfish@stampinpretty.com

<http://stampinpretty.com>



Night Divine
Bundle (English) -
161997

Price: \$48.50

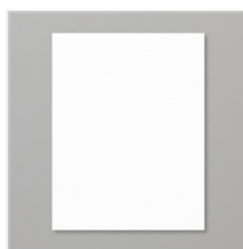
[Add to Cart](#)



Stars At Night
Hybrid Embossing
Folder - 162006

Price: \$39.00

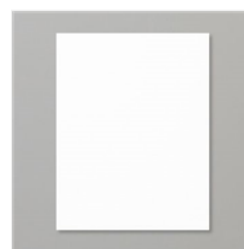
[Add to Cart](#)



Basic White 8-1/2"
X 11" Thick
Cardstock -
159229

Price: \$9.00

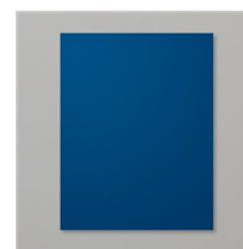
[Add to Cart](#)



Basic White 8-1/2"
X 11" Cardstock -
159276

Price: \$10.50

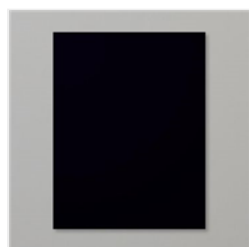
[Add to Cart](#)



Night Of Navy 8-
1/2" X 11"
Cardstock -
100867

Price: \$10.00

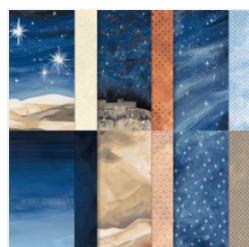
[Add to Cart](#)



Basic Black 8-1/2"
X 11" Cardstock -
121045

Price: \$10.00

[Add to Cart](#)



O Holy Night 12" X
12" (30.5 X 30.5
Cm) Designer
Series Paper -
161986

Price: \$12.50

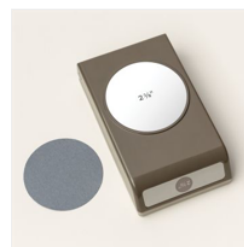
[Add to Cart](#)



Paper Trimmer -
152392

Price: \$26.00

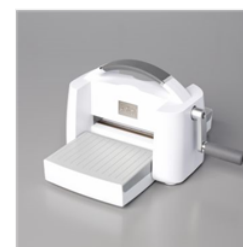
[Add to Cart](#)



2-3/8" (6 Cm)
Circle Punch -
161354

Price: \$22.00

[Add to Cart](#)



Stampin' Cut &
Emboss Machine -
149653

Price: \$128.00

[Add to Cart](#)



Mini Stampin' Cut
& Emboss
Machine - 150673

Price: \$66.00

[Add to Cart](#)



Stampin'
Dimensionals -
104430

Price: \$4.25

[Add to Cart](#)



Clear Block D -
118485

Price: \$9.50

[Add to Cart](#)



Rhinestone Basic
Jewels - 144220

Price: \$6.00

[Add to Cart](#)



Multipurpose
Liquid Glue -
110755

Price: \$5.50

[Add to Cart](#)

The Stars are Brightly Shining with O Holy Night!

Mary Fish

maryfish@stampinpretty.com

<http://stampinpretty.com>



Night Of Navy
Classic Stampin'
Pad - 147110

Price: \$9.00

Add to Cart



Basic White
Medium Envelopes
- 159236

Price: \$8.50

Add to Cart