

# It's Your Day Card with Handcrafted Essentials Dies

Mary Fish

[maryfish@stampinpretty.com](mailto:maryfish@stampinpretty.com)

<http://stampinpretty.com>



## CUT YOUR CARD STOCK:

- Very Vanilla Thick Card Stock:  
Card Base – 4 1/4 x 11, scored at 5 1/2
- Basic Black Card Stock:  
Die-Cut Rectangle - 3 1/4 x 4 1/2 (before die-cutting)  
Detailed Die-Cut - 3 x 3 1/2 (before die-cutting)
- Wild Wheat Card Stock:  
Die-Cut Rectangle - 3 x 4 1/4 (before die-cutting)
- Pretty Peacock Card Stock:  
Detailed Die-Cut - 3 x 3 1/2 (before die-cutting)
- Very Vanilla Card Stock:  
Die-Cut Sentiment - 3 x 1 1/2 (before die-cutting)

# It's Your Day Card with Handcrafted Essentials Dies

Mary Fish

[maryfish@stampinpretty.com](mailto:maryfish@stampinpretty.com)

<http://stampinpretty.com>



## PROJECT TUTORIAL:

1. Begin by burnishing the fold of the Very Vanilla Thick card base with a Bone Folder.
2. Use a Clear Block G to stamp the sentiment (Modern Garden Stamp Set) in Tuxedo Black Memento Ink onto the Very Vanilla layer.
3. Use a [Stampin' Cut & Emboss Machine](#) (Standard or Mini) and to crop the following with the Deckled Rectangle Dies:
  - Basic Black - 3 x 4 3/8
  - Wild Wheat - 2 5/8 x 4
  - Very Vanilla Sentiment - 2 3/8 x 1 - crop the top of the sentiment, reposition and crop the bottom
4. Adhere the Basic Black die-cut to the card base with Multipurpose Liquid Glue.
5. Adhere the Wild Wheat die-cut with Stampin' Dimensionals.
6. Adhere the Pretty Peacock layer to a piece of an Adhesive Sheet.
7. Crop the Basic Black and Pretty Peacock layer with a [Stampin' Cut & Emboss Machine](#) (Standard or Mini) and the coordinating Handmade Elements dies.
8. Remove the protective backing from the Peacock die-cut and adhere to the Basic Black die-cut as shown.
9. Adhere the die-cut layer to the card with Mini Stampin' Dimensionals.
10. Tie a bow of Linen Thread and adhere as shown with a Mini Glue Dot.
11. Adhere the cropped sentiment with Stampin' Dimensionals.
12. **POP OF PERSONALITY!** Embellish the a large Pretty Peacock Blooming Pearl.

[CLICK FOR BLOG POST](#)

[CLICK TO SHOP](#)

# It's Your Day Card with Handcrafted Essentials Dies

Mary Fish

[maryfish@stampinpretty.com](mailto:maryfish@stampinpretty.com)

<http://stampinpretty.com>



Modern Garden  
Photopolymer  
Stamp Set  
(English) - 162228

Price: \$24.00

Add to Cart



Handcrafted  
Elements Dies -  
162330

Price: \$38.00

Add to Cart



Deckled  
Rectangles Dies -  
159173

Price: \$30.00

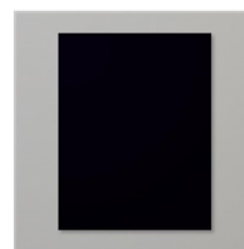
Add to Cart



Very Vanilla 8-1/2"  
X 11" Thick  
Cardstock -  
144237

Price: \$9.00

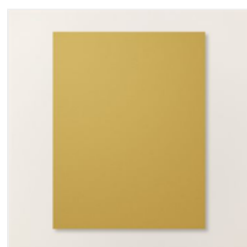
Add to Cart



Basic Black 8-1/2"  
X 11" Cardstock -  
121045

Price: \$10.00

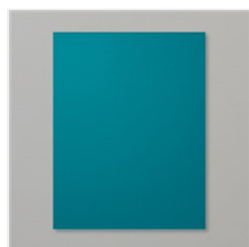
Add to Cart



Wild Wheat 8-1/2"  
X 11" Cardstock -  
161725

Price: \$10.00

Add to Cart



Pretty Peacock 8-  
1/2" X 11"  
Cardstock -  
150880

Price: \$10.00

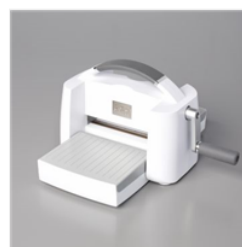
Add to Cart



Tuxedo Black  
Memento Ink Pad -  
132708

Price: \$6.50

Add to Cart



Stampin' Cut &  
Emboss Machine -  
149653

Price: \$128.00

Add to Cart



Mini Stampin' Cut  
& Emboss  
Machine - 150673

Price: \$66.00

Add to Cart



Paper Trimmer -  
152392

Price: \$26.00

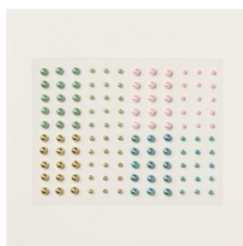
Add to Cart



Multipurpose  
Liquid Glue -  
110755

Price: \$5.50

Add to Cart



Blooming Pearls -  
162238

Price: \$8.00

Add to Cart



Linen Thread -  
104199

Price: \$5.00

Add to Cart



Mini Glue Dots -  
103683

Price: \$5.75

Add to Cart

# It's Your Day Card with Handcrafted Essentials Dies

Mary Fish

[maryfish@stampinpretty.com](mailto:maryfish@stampinpretty.com)

<http://stampinpretty.com>



Stampin'  
Dimensionals -  
104430

Price: \$4.25

Add to Cart



Mini Stampin'  
Dimensionals -  
144108

Price: \$4.25

Add to Cart