

Gorgeous Garden Dies Grab the Holiday Spotlight

Mary Fish
maryfish@stampinpretty.com
<http://stampinpretty.com>



CUT YOUR CARD STOCK:

- Shaded Spruce Card Stock:
Card Base – 4 1/4 x 11, scored at 5 1/2
- Real Red Card Stock:
Die-Cut Layer – 4 1/4 x 5 1/2 (before die-cutting)
Interior Layer – 4 x 5 1/4
- Basic White Card Stock:
Die-Cut Sentiment (Exterior) – 2 1/2 x 1 3/4 (before die-cutting)
Die-Cut Sentiment (Interior) – 2 1/2 x 4 3/4 (before die-cutting)
- Joy of Christmas Designer Series Paper:
Envelope Flap – 5 3/4 x 2 1/4

Gorgeous Garden Dies Grab the Holiday Spotlight

Mary Fish
maryfish@stampinpretty.com
<http://stampinpretty.com>



PROJECT TUTORIAL:

1. Begin by burnishing the fold of the Shaded Spruce card base with a Bone Folder.
2. Center the Gorgeous Garden die onto the 4 1/4 x 5 1/2 piece of Real Red card stock, then crop with a [Stampin' Cut & Emboss Machine](#) (Standard).
3. Adhere the die-cut with strategically placed Stampin' Dimensionals.
4. Use a Clear Block C to stamp the sentiments (Brightest Glow Stamp Set) in Shaded Spruce Classic Ink onto the coordinating Basic White layers.
5. Crop with a [Stampin' Cut & Emboss Machine](#) (Standard or Mini) and the 2 1/8 x 1 1/2 (exterior sentiment) and the 4 1/4 x 2 1/4 (interior sentiment) Nested Essentials Dies.
6. Adhere the exterior sentiment to the card as shown with Stampin' Dimensionals.
7. Adhere the 4 x 5 1/4 piece of Real Red card stock to the inside of the card with Multipurpose Liquid Glue.
8. Adhere the die-cut sentiment to the center of the Real Red layer with Multipurpose Liquid Glue.
9. **POP OF PERSONALITY!** Embellish as shown with gold Blooming Pearls as shown.
10. **PERFECT POLISH!** Use Multipurpose Liquid Glue to adhere the Designer Series Paper to the outside flap of a Basic White Medium Envelope.

[CLICK FOR BLOG POST](#)

[CLICK TO SHOP](#)

Gorgeous Garden Dies Grab the Holiday Spotlight

Mary Fish
maryfish@stampinpretty.com
<http://stampinpretty.com>



Brightest Glow Cling Stamp Set (English) - 159542

Price: \$25.00

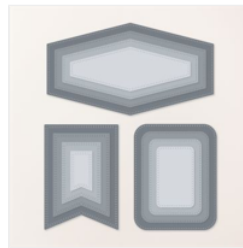
Add to Cart



Gorgeous Garden Dies - 161283

Price: \$42.00

Add to Cart



Nested Essentials Dies - 161597

Price: \$34.00

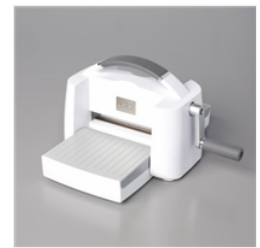
Add to Cart



Paper Trimmer - 152392

Price: \$26.00

Add to Cart



Stampin' Cut & Emboss Machine - 149653

Price: \$128.00

Add to Cart



Mini Stampin' Cut & Emboss Machine - 150673

Price: \$66.00

Add to Cart



Shaded Spruce 8-1/2" X 11" Cardstock - 146981

Price: \$10.00

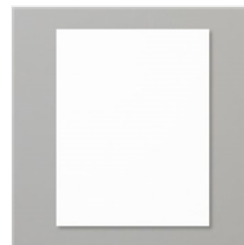
Add to Cart



Real Red 8-1/2" X 11" Cardstock - 102482

Price: \$10.00

Add to Cart



Basic White 8-1/2" X 11" Cardstock - 159276

Price: \$10.50

Add to Cart



Shaded Spruce Classic Stampin' Pad - 147088

Price: \$9.00

Add to Cart



Multipurpose Liquid Glue - 110755

Price: \$5.50

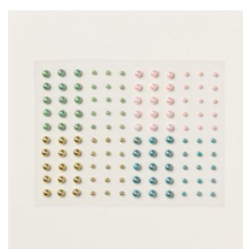
Add to Cart



Stampin' Dimensionals - 104430

Price: \$4.25

Add to Cart



Blooming Pearls - 162238

Price: \$8.00

Add to Cart



Basic White Medium Envelopes - 159236

Price: \$8.50

Add to Cart



Joy Of Christmas 12" X 12" (30.5 X 30.5 Cm) Designer Series Paper - 161958

Price: \$12.50

Add to Cart

Gorgeous Garden Dies Grab the Holiday Spotlight

Mary Fish

maryfish@stampinpretty.com

<http://stampinpretty.com>



Clear Block D -
118485

Price: \$9.50

Add to Cart