

Wishing You a Very Merry Christmas with Handcrafted Elements Dies

Mary Fish
maryfish@stampinpretty.com
<http://stampinpretty.com>


stampin' pretty
step-by-step tutorial



CUT YOUR CARD STOCK:

- Very Vanilla Thick Card Stock:
 - Card Base – 4 1/4 x 11, scored at 5 1/2
 - Layer – 3 1/2 x 4 3/4
- Very Vanilla Card Stock:
 - Die-Cut Ornament Layer – 2 3/4 x 2 (before die-cutting)
 - Die-Cut Sentiment – 3 x 2 (before die-cutting)
- Night of Navy Card Stock:
 - Layer – 3 x 3
 - Die-Cut Ornament – 3 1/2 x 3 (before die-cutting)
- Night of Navy Neutrals Designer Series Paper:
 - Envelope Flap – 5 3/4 x 2 1/4

Wishing You a Very Merry Christmas with Handcrafted Elements Dies

Mary Fish

maryfish@stampinpretty.com

<http://stampinpretty.com>



PROJECT TUTORIAL:

1. Begin by burnishing the fold of the card base with a Bone Folder.
2. Layer and adhere the Very Vanilla Thick to the Night of Navy together with Multipurpose Liquid Glue and to the card base with Stampin' Dimensionals.
3. Use a Clear Block D to stamp the sentiment (Joy To You) in Night of Navy Classic Ink onto the Very Vanilla sentiment layer.
4. Crop with a [Stampin' Cut & Emboss Machine](#) (Standard or Mini) and the Something Fancy label die.
5. Adhere to the card with Stampin' Dimensionals.
6. Use a [Stampin' Cut & Emboss Machine](#) (Standard or Mini) and the Handcrafted Elements dies to crop the Very Vanilla ornament layer and Night of Navy ornament.
7. Adhere together with Multipurpose Liquid Glue and to the card with Stampin' Dimensionals.
8. Adhere to the card with Stampin' Dimensionals.
9. Tie a bow of Very Vanilla Baker's Twine Essentials through the loop at the top of the ornament.
10. **POP OF PERSONALITY!** Embellish with Night of Navy Ombre Matte Decorative Dots.
11. **PERFECT POLISH!** Use Multipurpose Liquid Glue to adhere the Designer Series Paper to the outside flap of a Very Vanilla Medium Envelope. You can see my video demonstration with tips on adding designer paper to an envelope flap [here](#).

Mary Fish
Independent
Stampin' UP! Demonstrator

[CLICK FOR BLOG POST](#)

[CLICK TO SHOP](#)

Wishing You a Very Merry Christmas with Handcrafted Elements Dies

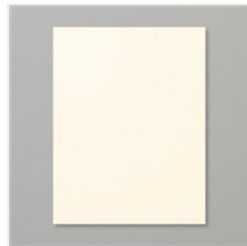
Mary Fish
maryfish@stampinpretty.com
<http://stampinpretty.com>



Joy To You Cling Stamp Set (English) - 162090

Price: \$24.00

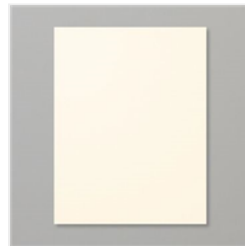
Add to Cart



Very Vanilla 8-1/2" X 11" Thick Cardstock - 144237

Price: \$9.00

Add to Cart



Very Vanilla 8-1/2" X 11" Cardstock - 101650

Price: \$10.50

Add to Cart



Night Of Navy 8-1/2" X 11" Cardstock - 100867

Price: \$10.00

Add to Cart



Clear Block D - 118485

Price: \$9.50

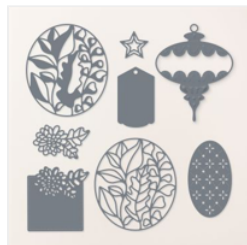
Add to Cart



Night Of Navy Classic Stampin' Pad - 147110

Price: \$9.00

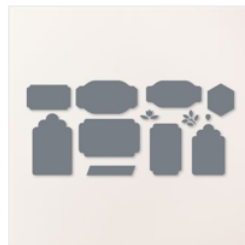
Add to Cart



Handcrafted Elements Dies - 162330

Price: \$38.00

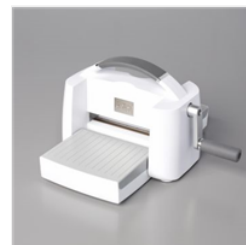
Add to Cart



Something Fancy Dies - 160424

Price: \$28.00

Add to Cart



Stampin' Cut & Emboss Machine - 149653

Price: \$128.00

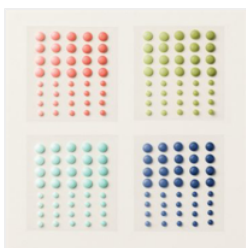
Add to Cart



Mini Stampin' Cut & Emboss Machine - 150673

Price: \$66.00

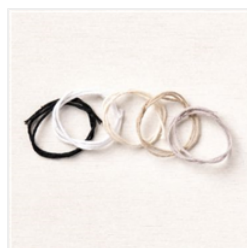
Add to Cart



Ombre Matte Decorative Dots - 161448

Price: \$8.00

Add to Cart



Baker's Twine Essentials Pack - 155475

Price: \$11.00

Add to Cart



Stampin' Dimensionals - 104430

Price: \$4.25

Add to Cart



Multipurpose Liquid Glue - 110755

Price: \$5.50

Add to Cart



Paper Trimmer - 152392

Price: \$26.00

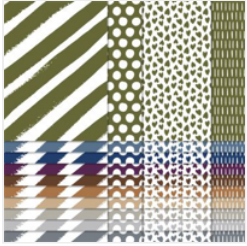
Add to Cart

Wishing You a Very Merry Christmas with Handcrafted Elements Dies

Mary Fish

maryfish@stampinpretty.com

<http://stampinpretty.com>



Neutrals 6" X 6"
(15.2 X 15.2 Cm)
Designer Series
Paper - 161641

Price: \$12.50

Add to Cart



Very Vanilla
Medium Envelopes
- 107300

Price: \$8.50

Add to Cart