

# The Art of Mixing Patterns with Shining Christmas Specialty Designer Series Paper

Mary Fish  
[maryfish@stampinpretty.com](mailto:maryfish@stampinpretty.com)  
<http://stampinpretty.com>

  
stampin' pretty  
step-by-step tutorial



## CUT YOUR CARD STOCK:

- Basic White Thick Card Stock:  
Card Base – 4 1/4 x 11, scored at 5 1/2
- Cherry Cobbler Card Stock:  
Layer – 4 x 5 1/4  
Die-cut Square – 3 x 3 (before die-cutting)
- Mossy Meadow Card Stock:  
Layer – 3 3/4 x 5
- Shining Christmas Specialty Designer Series Paper:  
Argyle Layer – 3 1/2 x 4 3/4  
Tree Die-cut Square – 2 1/2 x 2 1/2 (before die-cutting)  
Envelope Flap – 5 3/4 x 2 1/4

# The Art of Mixing Patterns with Shining Christmas Specialty Designer Series Paper

Mary Fish  
[maryfish@stampinpretty.com](mailto:maryfish@stampinpretty.com)  
<http://stampinpretty.com>



## PROJECT TUTORIAL:

1. Begin by burnishing the fold of the Basic White Thick card base with a Bone Folder.
2. Adhere the Cherry Cobbler layer to the card base with Multipurpose Liquid Glue.
3. Adhere the Shining Brightly Argyle Designer Series Paper layer to the Mossy Meadow layer together with Multipurpose Liquid Glue and to the card base with Stampin' Dimensionals.
4. Use a Stampin' Cut & Emboss Machine (Standard or Mini) to crop the Cherry Cobbler with the Stylish Shapes 2 3/4 stitched square die and the Shining Christmas Designer Series Paper with the 2 3/8 stitched square die.
5. Adhere together with Multipurpose Liquid Glue.
6. Wrap with Basic White Baker's Twine Essentials, securing with a bow.
7. Adhere to the card as shown with Stampin' Dimensionals.
8. Use a Clear Block A and a Clear Block C to stamp the sentiments in Cherry Cobbler and Mossy Meadow Classic Inks as shown.
9. Crop with a [Stampin' Cut & Emboss Machine](#) (Standard or Mini) and the 2 3/4 x 1 1/4 Tailor Made Tags die.
10. Adhere to the card as shown with Stampin' Dimensionals.
11. **POP OF PERSONALITY!** Embellish with Cherry Cobbler Festive Pearls.
12. **PERFECT POLISH!** Use Multipurpose Liquid Glue to adhere the Designer Series Paper to the outside flap of a Basic White Medium Envelope. You can see my video demonstration with tips on adding designer paper to an envelope flap [here](#).

Mary Fish  
Independent  
Stampin' UP! Demonstrator

[CLICK FOR BLOG POST](#)

[CLICK TO SHOP](#)

# The Art of Mixing Patterns with Shining Christmas Specialty Designer Series Paper

Mary Fish  
[maryfish@stampinpretty.com](mailto:maryfish@stampinpretty.com)  
<http://stampinpretty.com>



Christmas Classics  
Photopolymer  
Stamp Set  
(English) - 161970

Price: \$21.00

Add to Cart



Shining Christmas  
12" X 12" (30.5 X  
30.5 Cm) Specialty  
Designer Series  
Paper - 162354

Price: \$15.00

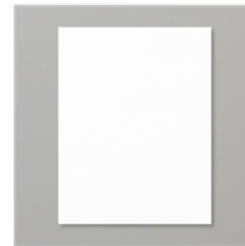
Add to Cart



Basic White 8-1/2"  
X 11" Thick  
Cardstock -  
159229

Price: \$9.00

Add to Cart



Basic White 8-1/2"  
X 11" Cardstock -  
159276

Price: \$10.50

Add to Cart



Cherry Cobbler 8-  
1/2" X 11"  
Cardstock -  
119685

Price: \$10.00

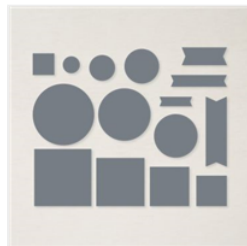
Add to Cart



Mossy Meadow 8-  
1/2" X 11"  
Cardstock -  
133676

Price: \$10.00

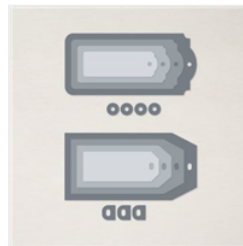
Add to Cart



Stylish Shapes  
Dies - 159183

Price: \$30.00

Add to Cart



Tailor Made Tags  
Dies - 155563

Price: \$22.00

Add to Cart



Cherry Cobbler  
Classic Stampin'  
Pad - 147083

Price: \$9.00

Add to Cart



Mossy Meadow  
Classic Stampin'  
Pad - 147111

Price: \$9.00

Add to Cart



Clear Block A -  
118487

Price: \$5.00

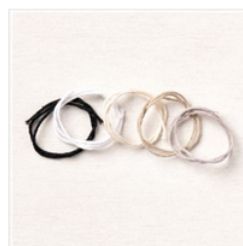
Add to Cart



Clear Block C -  
118486

Price: \$8.00

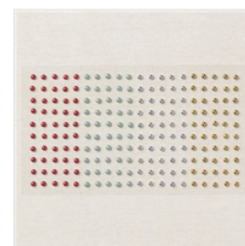
Add to Cart



Baker's Twine  
Essentials Pack -  
155475

Price: \$11.00

Add to Cart



Festive Pearls -  
159963

Price: \$7.00

Add to Cart



Basic White  
Medium Envelopes  
- 159236

Price: \$8.50

Add to Cart

# The Art of Mixing Patterns with Shining Christmas Specialty Designer Series Paper

Mary Fish

[maryfish@stampinpretty.com](mailto:maryfish@stampinpretty.com)

<http://stampinpretty.com>



Multipurpose  
Liquid Glue -  
110755

Price: \$5.50

Add to Cart



Stampin'  
Dimensionals -  
104430

Price: \$4.25

Add to Cart