

A Sympathy Card with Sincerity & Style

Mary Fish
maryfish@stampinpretty.com
<http://stampinpretty.com>


stampin' pretty
step-by-step tutorial



CUT YOUR CARD STOCK:

- Lost Lagoon Card Stock:
 - Card Base – 4 1/4 x 11, scored at 5 1/2
 - Die-cut – 2 1/2 x 2 1/2 (before die-cutting)
- Pebbled Path Card Stock:
 - Layer – 4 x 5 1/4
- Basic White Card Stock:
 - Layers – 3 3/4 x 5 and 2 3/4 x 3 3/4
 - Sentiment – 3 x 2 1/4 (before punching)
- Tartan Foil Specialty Designer Series Paper:
 - Lost Lagoon Layer – 3 1/4 x 4 3/4
 - Pebbled Path Layer – 3 1/2 x 2 1/4
 - Pebbled Path Flagged Strip – 4 1/4 x 3/4 (before flagging)

A Sympathy Card with Sincerity & Style

Mary Fish
maryfish@stampinpretty.com
<http://stampinpretty.com>



PROJECT TUTORIAL:

1. Begin by burnishing the fold of the Lost Lagoon card base with a Bone Folder.
2. Adhere the Pebbled Path layer to the card base with Multipurpose Liquid Glue.
3. Adhere the Lost Lagoon Designer Series Paper layer to the Basic White layer together with Multipurpose Liquid Glue and to the card base with Stampin' Dimensionals.
4. Adhere the Pebbled Path Designer Series Paper layer to the Basic White layer together with Multipurpose Liquid Glue and to the card base with Stampin' Dimensionals.
5. Flag the end of the Pebbled Path Designer Series Paper strip with the Banner's Pick a Punch.
6. Wrap with Basic White Baker's Twine Essentials, securing with a bow.
7. Adhere to the card as shown with snipped-to-size Stampin' Dimensionals.
8. Crop the Lost Lagoon layer with a [Stampin' Cut & Emboss Machine](#) (Standard or Mini) and the Stylish Shapes 2 3/8 stitched square die.
9. Adhere to the card as shown with Multipurpose Liquid Glue.
10. Use Clear Blocks A and D to stamp the sentiment, heart, and stitched border (Heartfelt Hexagons Stamp Set) in Lost Lagoon Classic Ink onto the Basic White layer as shown.
11. Crop with the coordinating Heartfelt Hexagons Punch.
12. Adhere to the card base with Stampin' Dimensionals.
13. **POP OF PERSONALITY!** Embellish with Pebbled Path 2023-2025 In Color Dots.
14. **PERFECT POLISH!** Use Multipurpose Liquid Glue to adhere the Designer Series Paper to the outside flap of a Basic White Medium Envelope. You can see my video demonstration with tips on adding designer paper to an envelope flap [here](#).

Mary Fish
Independent
Stampin' UP! Demonstrator

[CLICK FOR BLOG POST](#)

[CLICK TO SHOP](#)

A Sympathy Card with Sincerity & Style

Mary Fish

maryfish@stampinpretty.com

<http://stampinpretty.com>



Heartfelt Hexagon Bundle (English) - 162889

Price: \$37.75

Add to Cart



Heartfelt Hexagon Photopolymer Stamp Set (English) - 162882

Price: \$20.00

Add to Cart



Heartfelt Hexagon Punch - 162888

Price: \$22.00

Add to Cart



Lost Lagoon 8-1/2 X 11 Cardstock - 133679

Price: \$10.00

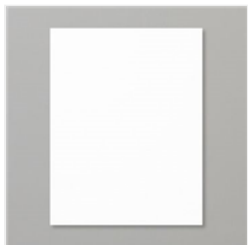
Add to Cart



Pebbled Path 8-1/2 X 11 Cardstock - 161722

Price: \$10.00

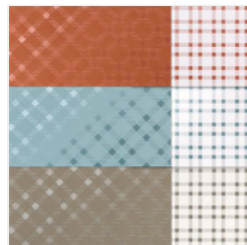
Add to Cart



Basic White 8-1/2 X 11 Cardstock - 159276

Price: \$10.50

Add to Cart



Tartan Foil 12 X 12 (30.5 X 30.5 Cm) Specialty Designer Series Paper - 162332

Price: \$10.00

Add to Cart



Lost Lagoon Classic Stampin' Pad - 161678

Price: \$9.00

Add to Cart



Clear Block D - 118485

Price: \$9.50

Add to Cart



Clear Block A - 118487

Price: \$5.00

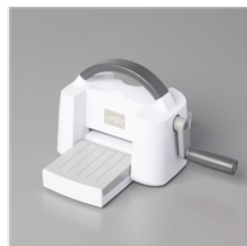
Add to Cart



Stampin' Cut & Emboss Machine - 149653

Price: \$128.00

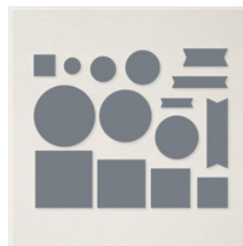
Add to Cart



Mini Stampin' Cut & Emboss Machine - 150673

Price: \$66.00

Add to Cart



Stylish Shapes Dies - 159183

Price: \$30.00

Add to Cart



Banners Pick A Punch - 153608

Price: \$27.00

Add to Cart



Baker's Twine Essentials Pack - 155475

Price: \$11.00

Add to Cart

A Sympathy Card with Sincerity & Style

Mary Fish

maryfish@stampinpretty.com

<http://stampinpretty.com>



Multipurpose
Liquid Glue -
110755

Price: \$5.50

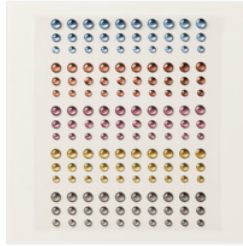
Add to Cart



Stampin'
Dimensionals -
104430

Price: \$4.25

Add to Cart



2023-2025 In
Color™ Dots -
161620

Price: \$8.00

Add to Cart