

Say "Hello" to the Stampin' Up! Them Bones Suite

Mary Fish
maryfish@stampinpretty.com
<http://stampinpretty.com>



CUT YOUR CARD STOCK:

- Basic Black Card Stock:
 - Card Base – 4 1/4 x 11, scored at 5 1/2, then cut at 2 3/4
 - Layer – 4 1/4 x 2 3/4 (cut from card base above)
 - Stamped & Die-Cut Layers – 4 1/4 x 5 1/2 for ALL (before die-cutting)
 - Interior Layer – 4 1/4 x 2 3/4
- Cajun Craze Card Stock:
 - Layers – 2 1/2 x 4 (Qty 2)
 - Interior Layer – 4 x 5 1/4
- Glow-in-the-Dark 6 x 6 Specialty Paper:
 - Stamped Interior Layer – 4 x 2 1/2
- Them Bones Designer Series Paper:
 - Layers – 2 1/4 x 3 3/4 (1 each of two designs)
 - Interior Layer – 5 x 3 3/4
 - Envelope Flap – 5 3/4 x 2 1/4

Say "Hello" to the Stampin' Up! Them Bones Suite

Mary Fish

maryfish@stampinpretty.com

<http://stampinpretty.com>



PROJECT TUTORIAL:

1. Begin by burnishing the fold of the Basic Black card base with a Bone Folder.
2. Adhere the three Cajun Craze card stock layers to the card base & Basic Black layer that was cut from the card base with Multipurpose Liquid Glue.
3. Adhere the three Them Bones Designer Series Paper layers to the Cajun Craze layers with Multipurpose Liquid Glue.
4. Adhere only the left side of the Basic Black layer that was cut from the card base to the card base flap as shown with Stampin' Dimensionals.
5. Rub the 4 1/4 x 5 1/2 Basic Black layer with an Embossing Buddy (Embossing Additions Tool Kit).
6. Use Clear Blocks C & D to stamp the images and sentiment (Bag of Bones Stamp Set) in Versamark Ink onto the Basic Black layer. Cover with white Basics Embossing Powder. Tap to remove the excess and set with a Heat Tool.
7. Use a [Stampin' Cut & Emboss Machine](#) (Standard or Mini) to crop the images with the coordinating Bag of Bones dies and the sentiment with the 2 7/8 x 1 1/4 Countryside Corners die.

Say "Hello" to the Stampin' Up! Them Bones Suite

Mary Fish
maryfish@stampinpretty.com
<http://stampinpretty.com>



8. Adhere to the card as shown with Stampin' Dimensionals.
9. Use a Clear Block B to stamp the sentiment (Bag of Bones) in Jet Black Stazon Ink onto the center of the Glow-in-the-Dark Specialty Designer Series Paper layer.
10. Adhere to the Basic Black layer and card interior with Multipurpose Liquid Glue.
11. **POP OF PERSONALITY!** Embellish the Glow-in-the-Dark Bats & Ghosts.
12. **PERFECT POLISH!** Use Multipurpose Liquid Glue to adhere the Designer Series Paper to the outside flap of a Basic White Medium Envelope. You can see my video demonstration with tips on adding designer paper to an envelope flap [here](#).

Mary Fish
Independent
Stampin' UP! Demonstrator

[CLICK FOR BLOG POST](#)

[CLICK TO SHOP](#)

Say "Hello" to the Stampin' Up! Them Bones Suite

Mary Fish

maryfish@stampinpretty.com

<http://stampinpretty.com>



Basic Black 8-1/2"
X 11" Cardstock -
121045

Price: \$10.00

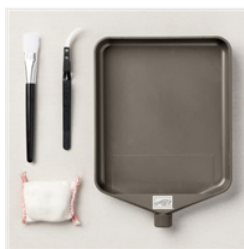
Add to Cart



Cajun Craze 8-1/2"
X 11" Cardstock -
119684

Price: \$10.00

Add to Cart



Embossing
Additions Tool Kit -
159971

Price: \$27.00

Add to Cart



VersaMark Pad -
102283

Price: \$9.50

Add to Cart



Basics Embossing
Powders - 155554

Price: \$18.00

Add to Cart



Heat Tool - 129053

Price: \$31.00

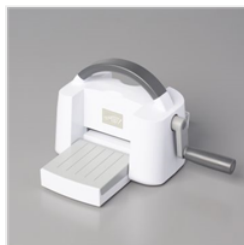
Add to Cart



Stampin' Cut &
Emboss Machine -
149653

Price: \$128.00

Add to Cart



Mini Stampin' Cut
& Emboss
Machine - 150673

Price: \$66.00

Add to Cart



Countryside
Corners Dies -
161471

Price: \$28.00

Add to Cart



Jet Black Stazon
Pad - 101406

Price: \$10.00

Add to Cart



Multipurpose
Liquid Glue -
110755

Price: \$5.50

Add to Cart



Stampin'
Dimensionals -
104430

Price: \$4.25

Add to Cart



Basic White
Medium Envelopes
- 159236

Price: \$8.50

Add to Cart



Clear Block B -
117147

Price: \$7.00

Add to Cart



Clear Block C -
118486

Price: \$8.00

Add to Cart

Say "Hello" to the Stampin' Up! Them Bones Suite

Mary Fish

maryfish@stampinpretty.com

<http://stampinpretty.com>



Clear Block D -
118485

Price: \$9.50

Add to Cart