

Make Christmas Magic with the Tiny Christmas Trees Die!

Mary Fish
maryfish@stampinpretty.com
<http://stampinpretty.com>



CUT YOUR CARD STOCK:

- Very Vanilla Thick Card Stock:
Card Base – 4 1/4 x 11, scored at 5 1/2
- Very Vanilla Card Stock:
Bottom Die-Cut Layer – 4 1/4 x 5 1/2 (before die-cutting)
Tree Die-Cut Layer – 3 1/4 x 4 3/4 (before die-cutting)
Die-cut Circle – 2 3/4 x 2 3/4 (before die-cutting)
Stamped & Die-Cut Sentiment – 2 3/4 x 2 3/4 (before die-cutting)
- Gold Foil Sheets:
Layer – 3 1/4 x 4 5/8
Die-Cut Circle – 3 1/4 x 3 1/4 (before die-cutting)
Sprigs – 4 x 2 1/4 (before die-cutting)

Make Christmas Magic with the Tiny Christmas Trees Die!

Mary Fish
maryfish@stampinpretty.com
<http://stampinpretty.com>



PROJECT TUTORIAL:

1. Begin by burnishing the fold of the Very Vanilla Thick card base with a Bone Folder.
2. Crop the largest Very Vanilla layer with a [Stampin' Cut & Emboss Machine](#) (Standard) and the 3 3/4 x 5 1/8 Deckled Rectangle die.
3. Adhere to the card base with Stampin' Dimensionals.
4. Adhere the Gold Foil layer to the card base with Multipurpose Liquid Glue.
5. Use a [Stampin' Cut & Emboss Machine](#) (Standard) to crop the Very Vanilla layer, first with Tiny Christmas Trees die, then with the 3 x 4 3/8 Deckled Rectangle die.
6. Wrap with Gold & Vanilla 3/8 Sating Edged Ribbon, securing with a bow.
7. Adhere to the card base with Stampin' Dimensionals.
8. Use a [Stampin' Cut & Emboss Machine](#) (Standard or Mini) to crop the Gold Foil with the Joy of Noel sprigs die (qty 2).
9. Adhere as shown with Mini Glue Dots.

Make Christmas Magic with the Tiny Christmas Trees Die!

Mary Fish
maryfish@stampinpretty.com
<http://stampinpretty.com>



10. Use a [Stampin' Cut & Emboss Machine](#) (Standard or Mini) to crop the Gold Foil and Very Vanilla layer with the 2 7/8 and 2 7/16 Deckled Circle dies respectively.
11. Adhere the circle die-cuts together with Multipurpose Liquid Glue and to the card with Stampin' Dimensionals.
12. Use a Clear Block D to stamp the sentiment (Joy of Noel Stamp Set) in Versamark Ink onto the Very Vanilla layer that has been rubbed with an Embossing Buddy (Embossing Additions Tool Kit). Cover with gold Metallics Embossing Powder. Tap to remove the excess. Set with a Heat Tool.
13. Crop with a [Stampin' Cut & Emboss Machine](#) (Standard or Mini) and the coordinating Joy of Noel dies.
14. Adhere to the die-cut circle as shown with Stampin' Dimensionals.
15. **POP OF PERSONALITY!** Embellish with gold Festive Pearls.

Mary Fish
Independent
Stampin' UP! Demonstrator

[CLICK FOR BLOG POST](#)

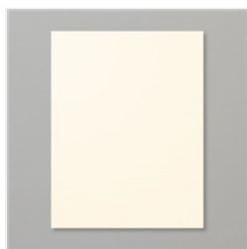
[CLICK TO SHOP](#)

Make Christmas Magic with the Tiny Christmas Trees Die!

Mary Fish

maryfish@stampinpretty.com

<http://stampinpretty.com>



Very Vanilla 8-1/2" X 11" Thick Cardstock - 144237

Price: \$9.00

Add to Cart



Very Vanilla 8-1/2" X 11" Cardstock - 101650

Price: \$10.50

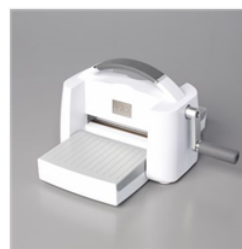
Add to Cart



Gold Foil Sheets - 132622

Price: \$5.00

Add to Cart



Stampin' Cut & Emboss Machine - 149653

Price: \$128.00

Add to Cart



Deckled Rectangles Dies - 159173

Price: \$30.00

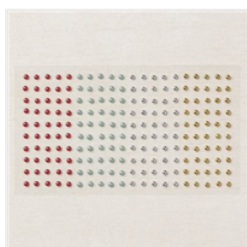
Add to Cart



Gold & Vanilla 3/8" (1 Cm) Satin Edged Ribbon - 159555

Price: \$8.00

Add to Cart



Festive Pearls - 159963

Price: \$7.00

Add to Cart



Embossing Additions Tool Kit - 159971

Price: \$27.00

Add to Cart



VersaMark Pad - 102283

Price: \$9.50

Add to Cart



Metallics Embossing Powders - 155555

Price: \$18.00

Add to Cart



Heat Tool - 129053

Price: \$31.00

Add to Cart