

# Stampin' Up! Inked Botanicals DSP Meets Nested Essentials Dies

Mary Fish  
[maryfish@stampinpretty.com](mailto:maryfish@stampinpretty.com)  
<http://stampinpretty.com>



## CUT YOUR CARD STOCK:

- Very Vanilla Thick Card Stock:  
Card Base – 5 1/2 x 8 1/2, scored at 4 1/4
- Very Vanilla Card Stock  
Layer – 5 1/2 x 3  
Die-Cut Sentiment- 4 3/4 x 1/2 (before die-cutting)
- Inked Botanicals 6 x 6 Designer Series Paper  
Layer – 5 1/2 x 3 1/2  
Die-cut Flags – 5 1/2 x 3 (dots), 5 x 2 1/4 (flowers)(before die-cutting)  
Envelope Flap – 5 3/4 x 2 1/4

# Stampin' Up! Inked Botanicals DSP Meets Nested Essentials Dies

Mary Fish  
[maryfish@stampinpretty.com](mailto:maryfish@stampinpretty.com)  
<http://stampinpretty.com>



## PROJECT TUTORIAL:

1. Begin by burnishing the fold of the Very Vanilla Thick card base with a Bone Folder.
2. Layer and adhere the Very Vanilla and Inked Botanicals layer together and to the card base with Multipurpose Liquid Glue.
3. Use a [Stampin' Cut & Emboss Machine](#) (Standard or Mini) and the 1 5/8 x 2 3/8 Nested Essentials flag die to crop the dots Inked Botanicals Designer Series Paper (Qty 3).
4. Use a [Stampin' Cut & Emboss Machine](#) (Standard or Mini) and the 1 1/8 x 1 3/4 Nested Essentials flag die to crop the floral Inked Botanicals Designer Series Paper (Qty 3).
5. Adhere the flags together and to the card as shown with Stampin' Dimensionals.
6. Loop a bow of Vanilla Baker's Twine Essentials and adhere to the flag die-cut with a Mini Glue Dot.
7. Use a Clear Block H to stamp the sentiment (Wonderful Thoughts Stamp Set) in Calypso Coral Classic Ink.
8. Crop with a [Stampin' Cut & Emboss Machine](#) (Standard or Mini) and the coordinating Wonderful Thoughts dies.
9. Adhere to the floral die-cuts with snipped-to-size Stampin' Dimensionals.
10. **POP OF PERSONALITY!** Embellish with Calypso Coral Ombre Matte Decorative Dots.
11. **PERFECT POLISH!** Use Multipurpose Liquid Glue to adhere the Designer Series Paper to the outside flap of a Very Vanilla Medium Envelope. You can see my video demonstration with tips on adding designer paper to an envelope flap [here](#).

Mary Fish  
Independent  
Stampin' UP! Demonstrator

[CLICK FOR BLOG POST](#)

[CLICK TO SHOP](#)

# Stampin' Up! Inked Botanicals DSP Meets Nested Essentials Dies

Mary Fish

[maryfish@stampinpretty.com](mailto:maryfish@stampinpretty.com)

<http://stampinpretty.com>



Wonderful  
Thoughts Bundle  
(English) - 161494

Price: \$53.00

Add to Cart



Wonderful  
Thoughts  
Photopolymer  
Stamp Set  
(English) - 161899

Price: \$25.00

Add to Cart



Wonderful  
Thoughts Dies  
(English) - 161491

Price: \$34.00

Add to Cart



Inked Botanicals 6"  
X 6" (15.2 X 15.2  
Cm) Designer  
Series Paper -  
161157

Price: \$12.50

Add to Cart



Very Vanilla 8-1/2"  
X 11" Thick  
Cardstock -  
144237

Price: \$9.00

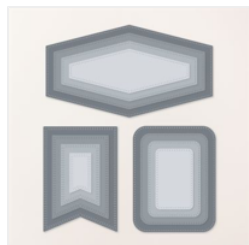
Add to Cart



Very Vanilla 8-1/2"  
X 11" Cardstock -  
101650

Price: \$10.50

Add to Cart



Nested Essentials  
Dies - 161597

Price: \$34.00

Add to Cart



Stampin' Cut &  
Emboss Machine -  
149653

Price: \$128.00

Add to Cart



Mini Stampin' Cut  
& Emboss  
Machine - 150673

Price: \$66.00

Add to Cart



Paper Trimmer -  
152392

Price: \$26.00

Add to Cart



Stampin'  
Dimensionals -  
104430

Price: \$4.25

Add to Cart



Multipurpose  
Liquid Glue -  
110755

Price: \$5.50

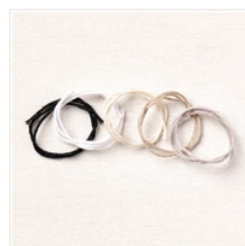
Add to Cart



Bone Folder -  
102300

Price: \$7.00

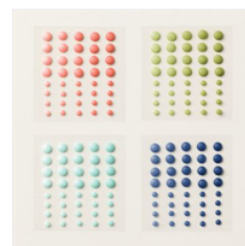
Add to Cart



Baker's Twine  
Essentials Pack -  
155475

Price: \$11.00

Add to Cart



Ombre Matte  
Decorative Dots -  
161448

Price: \$8.00

Add to Cart

# Stampin' Up! Inked Botanicals DSP Meets Nested Essentials Dies

Mary Fish

[maryfish@stampinpretty.com](mailto:maryfish@stampinpretty.com)

<http://stampinpretty.com>



Mini Glue Dots -  
103683

Price: \$5.75

Add to Cart



Very Vanilla  
Medium Envelopes  
- 107300

Price: \$8.50

Add to Cart