

Simple Hello Card with the Stampin' Up! Tropical Leaf Bundle

Mary Fish
maryfish@stampinpretty.com
<http://stampinpretty.com>


stampin' pretty
step-by-step tutorial



CUT YOUR CARD STOCK:

- Basic White Thick Card Stock:
 - Card Base – 4 1/4 x 11 – scored at 5 1/2
 - Embossed Layer – 3 3/4 x 5
- Basic White Card Stock:
 - Die-Cut/Stamped Layer – 3 1/4 x 3 1/4 (before die-cutting)
 - Die-Cut Leaf – 2 1/4 x 2 1/4 (before die-cutting)

Simple Hello Card with the Stampin' Up! Tropical Leaf Bundle

Mary Fish
maryfish@stampinpretty.com
<http://stampinpretty.com>



PROJECT TUTORIAL:

1. Burnish the folds of the Basic White Thick card base with a Bone Folder.
2. Zip the 3 3/4 x 5 piece of Basic White Thick card stock through a [Stampin' Cut & Emboss Machine](#) (Standard) tucked inside the Hobnail-Glass Dots 3D Embossing Folder.
3. Adhere to the card with Stampin' Dimensionals.
4. Use a [Stampin' Cut & Emboss Machine](#) (Standard or Mini) to crop the 3 1/4 x 3 1/4 piece of Basic White card stock with largest Stylish Shapes stitched square die.
5. Use Clear Blocks B & C to stamp the small leaf in Granny Apple Green Classic Ink and the leaf vein and sentiment (Tropical Leaf Stamp Set) in Mossy Meadow Classic Ink onto the die-cut square as shown.
6. Use Clear Block D to stamp the large leaf in Granny Apple Green Classic Ink and the leaf vein in Mossy Meadow Classic Ink onto the Basic White layer.
7. Crop with the coordinating Tropical Leaf Punch.
8. Adhere to the card as shown with Stampin' Dimensionals.
9. Use a Mini Glue Dot to adhere a bow of White Baker's Twine under the bottom left corner of the die-cut square.
10. **POP OF PERSONALITY!** Embellish with white Classic Matte Dots.

Mary Fish
Independent
Stampin' UP! Demonstrator

[CLICK FOR BLOG POST](#)

[CLICK TO SHOP](#)

Simple Hello Card with the Stampin' Up! Tropical Leaf Bundle

Mary Fish

maryfish@stampinpretty.com

<http://stampinpretty.com>



Tropical Leaf Bundle (English) - 161249

Price: \$37.75

Add to Cart



Tropical Leaf Photopolymer Stamp Set (English) - 161242

Price: \$20.00

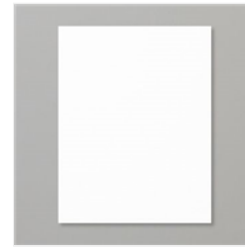
Add to Cart



Tropical Leaf Punch - 161248

Price: \$22.00

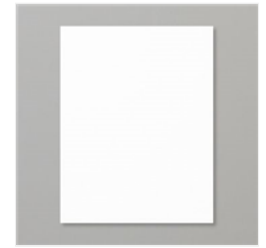
Add to Cart



Basic White 8-1/2" X 11" Thick Cardstock - 159229

Price: \$9.00

Add to Cart



Basic White 8-1/2" X 11" Cardstock - 159276

Price: \$10.50

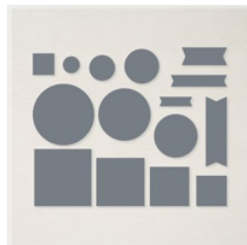
Add to Cart



Basics 3D Embossing Folders - 161598

Price: \$30.00

Add to Cart



Stylish Shapes Dies - 159183

Price: \$30.00

Add to Cart



Clear Block B - 117147

Price: \$7.00

Add to Cart



Clear Block C - 118486

Price: \$8.00

Add to Cart



Clear Block D - 118485

Price: \$9.50

Add to Cart



Granny Apple Green Classic Stampin' Pad - 147095

Price: \$9.00

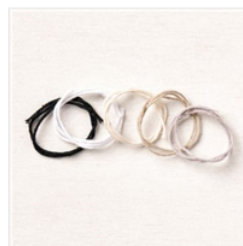
Add to Cart



Mossy Meadow Classic Stampin' Pad - 147111

Price: \$9.00

Add to Cart



Baker's Twine Essentials Pack - 155475

Price: \$11.00

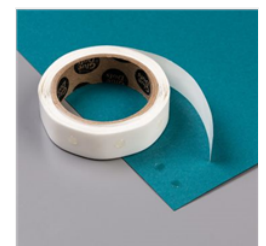
Add to Cart



Stampin' Dimensionals - 104430

Price: \$4.25

Add to Cart



Mini Glue Dots - 103683

Price: \$5.75

Add to Cart

Simple Hello Card with the Stampin' Up! Tropical Leaf Bundle

Mary Fish
maryfish@stampinpretty.com
<http://stampinpretty.com>



Stampin' Cut & Emboss Machine - 149653

Price: \$128.00

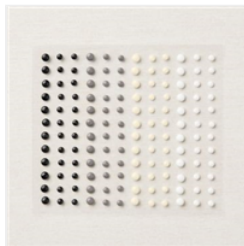
Add to Cart



Mini Stampin' Cut & Emboss Machine - 150673

Price: \$66.00

Add to Cart



Classic Matte Dots - 158146

Price: \$7.00

Add to Cart