

Show Sympathy with Kindest Expressions and Petal Patterns

Mary Fish
maryfish@stampinpretty.com
<http://stampinpretty.com>


stampin' pretty
step-by-step tutorial



CUT YOUR CARD STOCK:

- Very Vanilla Thick Card Stock:
 - Card Base – 5 1/2 x 11, scored at 5 1/2
 - Layer – 5 x 5
 - Die-Cut Layer- 5 x 5 (before die-cutting)
 - Die-Cut Label – 3 1/2 x 2 1/4 (before die-cutting)
- Very Vanilla Card Stock:
 - Sentiment Layer – 2 5/8 x 1 3/8
- Blackberry Bliss Card Stock:
 - Die-Cut Layer- 5 x 5 (before die-cutting)

Show Sympathy with Kindest Expressions and Petal Patterns

Mary Fish
maryfish@stampinpretty.com
<http://stampinpretty.com>



PROJECT TUTORIAL:

1. Begin by burnishing the fold of the Very Vanilla Thick card base with a Bone Folder.
2. Adhere the Very Vanilla Thick layer to the card base with Stampin' Dimensionals.
3. Use a [Stampin' Cut & Emboss Machine](#) (Standard) to crop the Blackberry Bliss card stock with the Petal Pattern die.
4. Use a [Stampin' Cut & Emboss Machine](#) (Standard) to crop the Very Vanilla Thick card stock that has been adhered to an Adhesive Sheet with the "outline" Petal Pattern die.
5. Remove the adhesive protective backing from the Very Vanilla die-cut and adhere to the Blackberry Bliss die-cut.
6. Adhere to the card base with Mini Stampin' Dimensionals.
7. Use a [Stampin' Cut & Emboss Machine](#) (Standard or Mini) to crop the Very Vanilla card stock with the 3 1/8 x 1 3/4 Scalloped Contours die.
8. Adhere to the card with Stampin' Dimensionals.
9. Use a Clear Block D to stamp the sentiment (Kindest Expressions Stamp Set) in Blackberry Bliss Classic Ink onto the Very Vanilla sentiment layer.
10. Loop Very Vanilla Baker's Twine into a bow shape and adhere it to the die-cut with Mini Glue Dots.
11. Adhere the sentiment to the card as shown with Stampin' Dimensionals.

Mary Fish
Independent
Stampin' UP! Demonstrator

[CLICK FOR BLOG POST](#)

[CLICK TO SHOP](#)

Show Sympathy with Kindest Expressions and Petal Patterns

Mary Fish

maryfish@stampinpretty.com

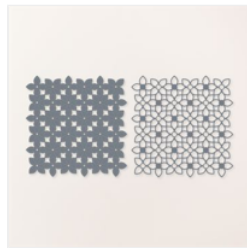
<http://stampinpretty.com>



Kindest Expressions Cling Stamp Set (English) - 161415

Price: \$24.00

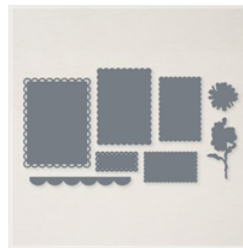
[Add to Cart](#)



Petal Patterns Dies - 161596

Price: \$45.00

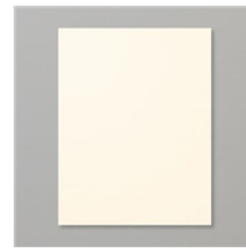
[Add to Cart](#)



Scalloped Contours Dies - 155560

Price: \$35.00

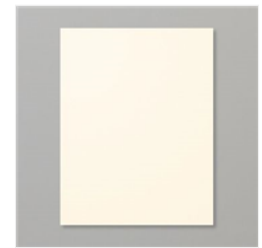
[Add to Cart](#)



Very Vanilla 8-1/2" X 11" Thick Cardstock - 144237

Price: \$9.00

[Add to Cart](#)



Very Vanilla 8-1/2" X 11" Cardstock - 101650

Price: \$10.50

[Add to Cart](#)



Blackberry Bliss 8-1/2" X 11" Cardstock - 133675

Price: \$10.00

[Add to Cart](#)



Clear Block D - 118485

Price: \$9.50

[Add to Cart](#)



Blackberry Bliss Classic Stampin' Pad - 147092

Price: \$9.00

[Add to Cart](#)



Adhesive Sheets - 152334

Price: \$11.50

[Add to Cart](#)



Stampin' Cut & Emboss Machine - 149653

Price: \$128.00

[Add to Cart](#)



Paper Trimmer - 152392

Price: \$26.00

[Add to Cart](#)



Bone Folder - 102300

Price: \$7.00

[Add to Cart](#)



Stampin' Dimensionals - 104430

Price: \$4.25

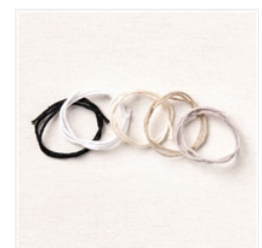
[Add to Cart](#)



Mini Stampin' Dimensionals - 144108

Price: \$4.25

[Add to Cart](#)



Baker's Twine Essentials Pack - 155475

Price: \$11.00

[Add to Cart](#)

Show Sympathy with Kindest Expressions and Petal Patterns

Mary Fish

maryfish@stampinpretty.com

<http://stampinpretty.com>



Mini Glue Dots -
103683

Price: \$5.75

Add to Cart