

# A Simple Lesson in Mixing Patterns from Delightfully Eclectic Designer Series Paper

Mary Fish

[maryfish@stampinpretty.com](mailto:maryfish@stampinpretty.com)

<http://stampinpretty.com>



## CUT YOUR CARD STOCK:

- Crushed Curry Card Stock:  
Card Base – 4 1/4 x 11, scored at 5 1/2
- Basic White Card Stock:  
Layers – 4 x 5 1/4 (qty 2) and 3 1/4 x 3 3/4  
Die-cut Sentiment – 1 3/4 x 1 3/4 (before die-cutting)
- Delightfully Eclectic Designer Series Paper:  
Layers – 3 3/4 x 5 (dots) and 3 x 3 1/2 (daisy)  
Envelope Flap – 5 3/4 x 2 1/4 (daisy)

# A Simple Lesson in Mixing Patterns from Delightfully Eclectic Designer Series Paper

Mary Fish  
[maryfish@stampinpretty.com](mailto:maryfish@stampinpretty.com)  
<http://stampinpretty.com>



## PROJECT TUTORIAL:

1. Burnish the fold of the Crushed Curry card base with a Bone Folder.
2. Layer and adhere the Designer Series Paper (dots) to the Basic White layer together with Multipurpose Liquid Glue and to the card with Stampin' Dimensionals.
3. Adhere the Designer Series Paper (daisies) to the Basic White layer together with Multipurpose Liquid Glue.
4. Double wrap with white Baker's Twine Essentials, securing with a bow on the left-side.
5. Adhere to the card with Stampin' Dimensionals as shown.
6. Use a Clear Block B to stamp the sentiment (Hope You Know) in Crushed Curry Classic Ink onto the small square.
7. Crop with a [Stampin' Cut & Emboss Machine](#) (Standard or Mini) and the largest Radiating Stitches circle die.
8. Adhere as shown with Stampin' Dimensionals.
9. Use a Clear Block D to stamp the sentiment (Hope You Know) in Crushed Curry Classic Ink onto the second 4 x 5 1/4 Basic White layer.
10. Adhere to the inside of the card base with Multipurpose Liquid Glue.
11. **POP OF PERSONALITY!** Embellish with white Classic Matte Dots.
12. **PERFECT POLISH!** Use Multipurpose Liquid Glue to adhere the Designer Series Paper to the outside flap of a Basic White Medium Envelope. You can see my video demonstration with tips on adding designer paper to an envelope flap [here](#).

Mary Fish  
Independent  
Stampin' UP! Demonstrator

[CLICK FOR BLOG POST](#)

[CLICK TO SHOP](#)

# A Simple Lesson in Mixing Patterns from Delightfully Eclectic Designer Series Paper

Mary Fish

[maryfish@stampinpretty.com](mailto:maryfish@stampinpretty.com)

<http://stampinpretty.com>



Hope You Know  
Cling Stamp Set  
(English) - 161409

Price: \$24.00

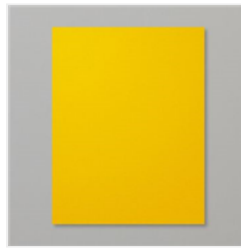
Add to Cart



Delightfully  
Eclectic 12" X 12"  
(30.5 X 30.5 Cm)  
Designer Series  
Paper - 161640

Price: \$30.00

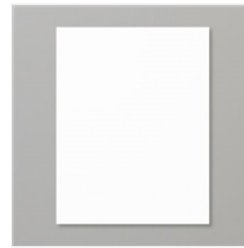
Add to Cart



Crushed Curry 8-  
1/2" X 11"  
Cardstock -  
131199

Price: \$10.00

Add to Cart



Basic White 8-1/2"  
X 11" Cardstock -  
159276

Price: \$10.50

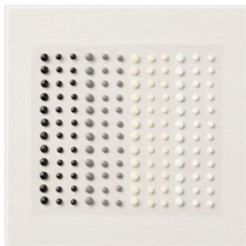
Add to Cart



Baker's Twine  
Essentials Pack -  
155475

Price: \$11.00

Add to Cart



Classic Matte Dots  
- 158146

Price: \$7.00

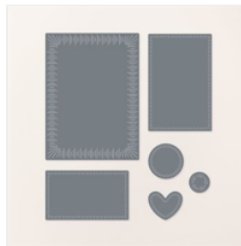
Add to Cart



Paper Trimmer -  
152392

Price: \$26.00

Add to Cart



Radiating Stitches  
Dies - 161595

Price: \$30.00

Add to Cart



Clear Block B -  
117147

Price: \$7.00

Add to Cart



Clear Block D -  
118485

Price: \$9.50

Add to Cart



Crushed Curry  
Classic Stampin'  
Pad - 147087

Price: \$9.00

Add to Cart



Multipurpose  
Liquid Glue -  
110755

Price: \$5.50

Add to Cart



Stampin'  
Dimensionals -  
104430

Price: \$4.25

Add to Cart



Bone Folder -  
102300

Price: \$7.00

Add to Cart



Stampin' Cut &  
Emboss Machine -  
149653

Price: \$128.00

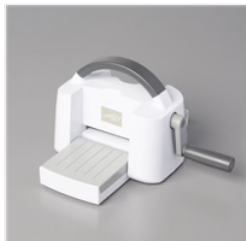
Add to Cart

# A Simple Lesson in Mixing Patterns from Delightfully Eclectic Designer Series Paper

Mary Fish

[maryfish@stampinpretty.com](mailto:maryfish@stampinpretty.com)

<http://stampinpretty.com>



Mini Stampin' Cut  
& Emboss  
Machine - 150673

Price: \$66.00

Add to Cart