

# A Hello There Card with Darling Details

Mary Fish  
[maryfish@stampinpretty.com](mailto:maryfish@stampinpretty.com)  
<http://stampinpretty.com>

  
stampin' pretty  
step-by-step tutorial



## CUT YOUR CARD STOCK:

- Boho Blue Card Stock:  
Card Base – 5 1/2 x 8 1/2, scored at 4 1/4
- Basic White Card Stock:  
Layer - 4 3/4 x 3 1/2  
Die-Cut Sentiment Layer - 2 x 1 1/2 (before die-cutting)
- Lemon Lolly Card Stock:  
Layer - 4 1/2 x 3 1/4
- Boho Blue 2023-2025 In Color Luster Specialty Paper  
Die-Cut Flowers Layer - 4 x 3 (before die-cutting)
- Boho Blue 2023-2025 In Color 6 x 6 Design  
Envelope Flap - 5 3/4 x 2 1/4

# A Hello There Card with Darling Details

Mary Fish  
[maryfish@stampinpretty.com](mailto:maryfish@stampinpretty.com)  
<http://stampinpretty.com>



## PROJECT TUTORIAL:

1. Begin by burnishing the fold of the Boho Blue card base with a Bone Folder.
2. Use a Blending Brush to blend Cajun Craze Classic Ink to the top and bottom of the Lemon Lolly card stock layer.
3. Adhere to the Basic White layer with Multipurpose Liquid Glue and to the card with Stampin' Dimensionals.
4. Crop two sets of flowers and a coordinating leaf from the Boho Blue Luster Specialty Paper with a [Stampin' Cut & Emboss Machine](#) (Standard or Mini) and the Darling Details dies.
5. Use a Clear Block A to stamp the sentiment (Darling Details) in Cajun Craze Classic Ink onto the Basic White layer.
6. Crop with a [Stampin' Cut & Emboss Machine](#) (Standard or Mini) and the All That oval die.
7. Adhere the three Boho Blue die-cuts to the back of the sentiment and to the card as shown with Stampin' Dimensionals.
8. **POP OF PERSONALITY!** Embellish with Lemon Lolly Adhesive-Backed Solid Gems.
9. **PERFECT POLISH!** Use Multipurpose Liquid Glue to adhere the Designer Series Paper to the outside flap of a Basic White Medium Envelope. You can see my video demonstration with tips on adding designer paper to an envelope flap

Mary Fish  
Independent  
Stampin' UP! Demonstrator

[CLICK FOR BLOG POST](#)

[CLICK TO SHOP](#)

# A Hello There Card with Darling Details

Mary Fish

[maryfish@stampinpretty.com](mailto:maryfish@stampinpretty.com)

<http://stampinpretty.com>



Darling Details Bundle - 161371

Price: \$54.00

Add to Cart



Darling Details Photopolymer Stamp Set (English) - 161368

Price: \$24.00

Add to Cart



Darling Details Dies - 161370

Price: \$36.00

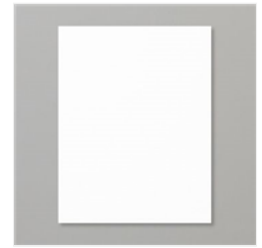
Add to Cart



Boho Blue 8-1/2" X 11" Cardstock - 161724

Price: \$10.00

Add to Cart



Basic White 8-1/2" X 11" Cardstock - 159276

Price: \$10.50

Add to Cart



Lemon Lolly 8-1/2" X 11" Cardstock - 161720

Price: \$10.00

Add to Cart



Blending Brushes - 153611

Price: \$13.00

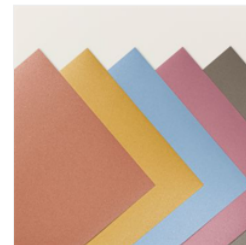
Add to Cart



Cajun Craze Classic Stampin' Pad - 147085

Price: \$9.00

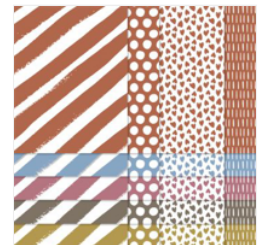
Add to Cart



2023-2025 In Color™ 12" X 12" (30.5 X 30.5 Cm) Luster Specialty Paper - 161746

Price: \$11.00

Add to Cart



2023-2025 In Color 6" X 6" (15.2 X 15.2 Cm) Designer Series Paper - 161646

Price: \$12.50

Add to Cart



Basic White Medium Envelopes - 159236

Price: \$8.50

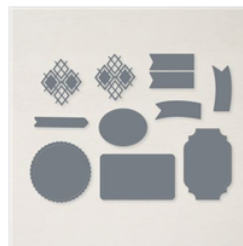
Add to Cart



Clear Block A - 118487

Price: \$5.00

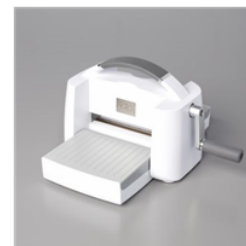
Add to Cart



All That Dies - 159078

Price: \$28.00

Add to Cart



Stampin' Cut & Emboss Machine - 149653

Price: \$128.00

Add to Cart



Mini Stampin' Cut & Emboss Machine - 150673

Price: \$66.00

Add to Cart

# A Hello There Card with Darling Details

Mary Fish

[maryfish@stampinpretty.com](mailto:maryfish@stampinpretty.com)

<http://stampinpretty.com>



Paper Trimmer -  
152392

Price: \$26.00

Add to Cart



Multipurpose  
Liquid Glue -  
110755

Price: \$5.50

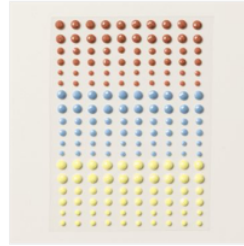
Add to Cart



Stampin'  
Dimensionals -  
104430

Price: \$4.25

Add to Cart



Adhesive-Backed  
Solid Gems -  
161300

Price: \$8.00

Add to Cart