

Create Pretty Patterns & Shapes with Stampin' Up! Nested Essentials Dies

Mary Fish

maryfish@stampinpretty.com

<http://stampinpretty.com>



CUT YOUR CARD STOCK – DIMENSIONS:

- Pretty Peacock Card Stock:
 - Card Base – 5 1/2 x 8 1/2, scored at 4 1/4
 - Embossed Layer – 5 x 3 1/4
- Berry Burst Card Stock
 - Layer – 4 3/4 x 3 5/8
- Basic White Card Stock:
 - Layer – 5 1/4 x 4
 - Paper Piecing Layer – 5 1/2 x 4 1/4
 - Sentiment Die-Cut – 2 1/4 x 3/4 (before die-cutting)
- Masterfully Made Designer Series Paper:
 - Die-Cuts – 4 x 2 each die-cut (before die-cutting)

Create Pretty Patterns & Shapes with Stampin' Up! Nested Essentials Dies

Mary Fish
maryfish@stampinpretty.com
<http://stampinpretty.com>



PROJECT TUTORIAL:

1. Begin by burnishing the fold of the Pretty Peacock card base with a Bone Folder.
2. Adhere the Berry Burst and Basic White layers together as shown with Multipurpose Liquid Glue and to the card with Stampin' Dimensionals.
3. Zip the Pretty Peacock layer through a [Stampin' Cut & Emboss Machine](#) (Standard) tucked inside the Timeworn Type 3D Embossing Folder.
4. Adhere as shown with Multipurpose Liquid Glue.
5. Use a [Stampin' Cut & Emboss Machine](#) (Standard) and the smallest Nested Essentials label die to crop the 7 pieces of Masterfully Made Designer Series Paper (4 Pretty Peacock, 2 Fresh Freesia, 1 Berry Burst).
6. Use a Paper Trimmer or Paper Snips to cut two Pretty Peacock and one Berry Burst die-cuts in half.

Create Pretty Patterns & Shapes with Stampin' Up! Nested Essentials Dies

Mary Fish

maryfish@stampinpretty.com

<http://stampinpretty.com>



7. Adhere all die-cuts with Multipurpose Liquid Glue to the Basic White layer as shown.
8. Crop the paper-pieced layer with a [Stampin' Cut & Emboss Machine](#) (Standard) and two largest Nested Essentials dies (smaller die nested inside the larger die).
9. Adhere the "frame" die-cut to the card with Multipurpose Liquid Glue and the center to the card with Stampin' Dimensionals.
10. Use a Clear Block C to stamp the sentiment (Timeless Arrangements Bundle) in Berry Burst Classic Ink onto the Basic White layer.
11. Crop with a [Stampin' Cut & Emboss Machine](#) (Standard or Mini) and the smallest Timeless Arrangements label die.
12. Tie a bow of white Baker's Twine Essentials and adhere to the back of the label die with a Mini Glue Dot.
13. Adhere to the card with Stampin' Dimensionals.
14. **POP OF PERSONALITY!** Embellish with three white Adhesive-Backed Sequins Trio.

Mary Fish
Independent
Stampin' UP! Demonstrator

[CLICK FOR BLOG POST](#)

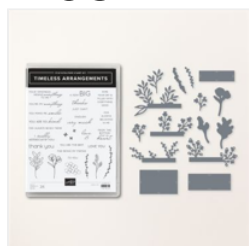
[CLICK TO SHOP](#)

Create Pretty Patterns & Shapes with Stampin' Up! Nested Essentials Dies

Mary Fish

maryfish@stampinpretty.com

<http://stampinpretty.com>



Timeless
Arrangements
Bundle (English) -
161526

Price: \$54.00

Add to Cart



Timeless
Arrangements
Photopolymer
Stamp Set
(English) - 161521

Price: \$25.00

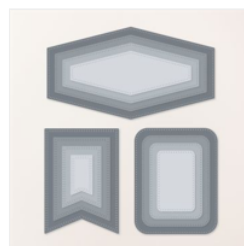
Add to Cart



Timeless
Arrangements Dies
- 161525

Price: \$35.00

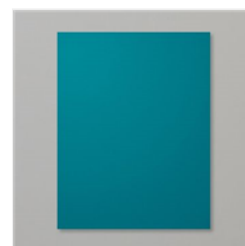
Add to Cart



Nested Essentials
Dies - 161597

Price: \$34.00

Add to Cart



Pretty Peacock 8-
1/2" X 11"
Cardstock -
150880

Price: \$10.00

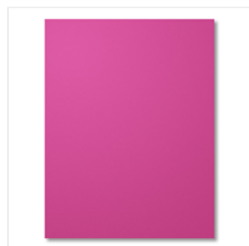
Add to Cart



Basic White 8-1/2"
X 11" Cardstock -
159276

Price: \$10.50

Add to Cart



Berry Burst 8-1/2"
X 11" Cardstock -
144243

Price: \$10.00

Add to Cart



Masterfully Made
12" X 12" (30.5 X
30.5 Cm) Designer
Series Paper -
161192

Sale: \$10.62

Price: \$12.50

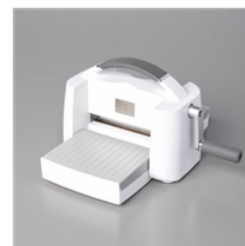
Add to Cart



Paper Trimmer -
152392

Price: \$26.00

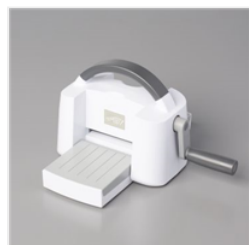
Add to Cart



Stampin' Cut &
Emboss Machine -
149653

Price: \$128.00

Add to Cart



Mini Stampin' Cut
& Emboss
Machine - 150673

Price: \$66.00

Add to Cart



Baker's Twine
Essentials Pack -
155475

Price: \$11.00

Add to Cart



Multipurpose
Liquid Glue -
110755

Price: \$5.50

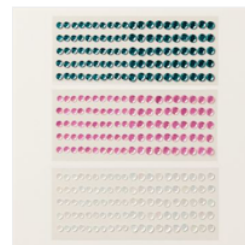
Add to Cart



Stampin'
Dimensionals -
104430

Price: \$4.25

Add to Cart



Adhesive-Backed
Sequins Trio -
161206

Price: \$8.00

Add to Cart

Create Pretty Patterns & Shapes with Stampin' Up! Nested Essentials Dies

Mary Fish

maryfish@stampinpretty.com

<http://stampinpretty.com>



Berry Burst Classic
Stampin' Pad -
147143

Price: \$9.00

Add to Cart



Clear Block C -
118486

Price: \$8.00

Add to Cart



Basic White
Medium Envelopes
- 159236

Price: \$8.50

Add to Cart