

Cheerful Daisies to Brighten Your Day!

Mary Fish
maryfish@stampinpretty.com
<http://stampinpretty.com>



CUT YOUR CARD STOCK – DIMENSIONS:

- Pebbled Path Card Stock:
 - Card Base – 5 1/2 x 8 1/2, scored at 4 1/4
 - Die-Cut Flowers – 4 x 3 (before die-cutting)
 - Die-cut Flag – 1 1/2 x 2 1/4 (before die-cutting)
- Azure Afternoon Card Stock:
 - Layer – 5 1/4 x 4
- Basic White Card Stock:
 - Embossed Layer – 4 3/4 x 3 1/2
 - Die-Cut Flowers – 4 x 3 (before die-cutting)
 - Stamped & Die-Cut Leaves & Flower Centers – 3 x 3 (before die-cutting)
- Lemon Lolly Card Stock:
 - Die-Cut Flowers – 4 x 3 (before die-cutting)
- Brights 6 x 6 Designer Series Paper:
 - Envelope Flap – 5 3/4 x 2 1/4

Cheerful Daisies to Brighten Your Day!

Mary Fish
maryfish@stampinpretty.com
<http://stampinpretty.com>



1. Begin by burnishing the fold of the Pebbled Path card base with a Bone Folder.
2. Adhere the Azure Afternoon layer to the card base with Stampin' Dimensionals.
3. Zip the Basic White layer through a [Stampin' Cut & Emboss Machine](#) tucked inside the crosshatch Basics 3D Embossing Folder.
4. Adhere to the card with Multipurpose Liquid Glue.
5. Stamp the flower centers (1 large & 2 small) and leaves (4) in Pebbled Path Classic Ink onto Basic White layer.
6. Use a [Stampin' Cut & Emboss Machine](#) (Standard or Mini) to crop the following:
 - Pebbled Path – Flagged Label – Nested Essentials Die, Bottom Daisy Layers – Cheerful Daisies Dies
 - Basic White – Connected Daisies – Cheerful Daisies Die -(snip the leaves off the large daisy)
 - Lemon Lolly – Detailed Daisy Leaves – Cheerful Daisies Dies
 - Stamped Leaves & Large Flower Center – Coordinating Cheerful Daisies Dies
7. Snip the two smaller flower centers closely with Paper Snips.

Cheerful Daisies to Brighten Your Day!

Mary Fish
maryfish@stampinpretty.com
<http://stampinpretty.com>



8. Adhere all daisy pieces together as shown with Multipurpose Liquid Glue.
9. Adhere all pieces to the card and the flower centers to daisies as shown with Stampin' Dimensionals.
10. Rub the Pebbled Path flagged die-cut with an Embossing Buddy.
11. Use masking paper to mask and stamp the sentiment in Versamark Ink as shown.
12. Cover with white Stampin' Emboss Powder, set with a Heat Tool.
13. **POP OF PERSONALITY!** Embellish with Pebbled Path 2023-2025 In Color Dots.
14. **PERFECT POLISH!** Use Multipurpose Liquid Glue to adhere the Designer Series Paper to the outside flap of a Basic White Medium Envelope. You can see my video demonstration with tips on adding designer paper to an envelope flap [here](#).

Mary Fish
Independent
Stampin' UP! Demonstrator

[CLICK FOR BLOG POST](#)

[CLICK TO SHOP](#)

Cheerful Daisies to Brighten Your Day!

Mary Fish

maryfish@stampinpretty.com

<http://stampinpretty.com>



Cheerful Daisies Bundle (English) - 161297

Price: \$53.00

[Add to Cart](#)



Cheerful Daisies Photopolymer Stamp Set (English) - 161290

Price: \$25.00

[Add to Cart](#)



Cheerful Daisies Dies - 161296

Price: \$34.00

[Add to Cart](#)



Paper Trimmer - 152392

Price: \$26.00

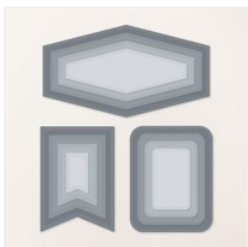
[Add to Cart](#)



Basics 3D Embossing Folders - 161598

Price: \$30.00

[Add to Cart](#)



Nested Essentials Dies - 161597

Price: \$34.00

[Add to Cart](#)



Stampin' Cut & Emboss Machine - 149653

Price: \$128.00

[Add to Cart](#)



Mini Stampin' Cut & Emboss Machine - 150673

Price: \$66.00

[Add to Cart](#)



Multipurpose Liquid Glue - 110755

Price: \$5.50

[Add to Cart](#)



Basic White Medium Envelopes - 159236

Price: \$8.50

[Add to Cart](#)



Stampin' Dimensionals - 104430

Price: \$4.25

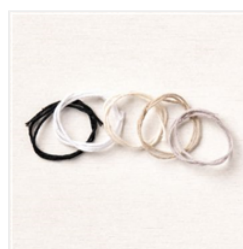
[Add to Cart](#)



Bone Folder - 102300

Price: \$7.00

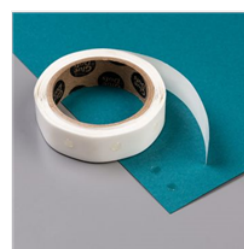
[Add to Cart](#)



Baker's Twine Essentials Pack - 155475

Price: \$11.00

[Add to Cart](#)



Mini Glue Dots - 103683

Price: \$5.75

[Add to Cart](#)



Pebbled Path 8-1/2" X 11" Cardstock - 161722

Price: \$10.00

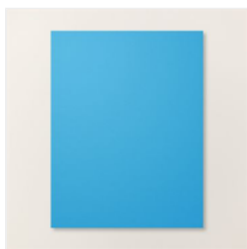
[Add to Cart](#)

Cheerful Daisies to Brighten Your Day!

Mary Fish

maryfish@stampinpretty.com

<http://stampinpretty.com>



Azure Afternoon 8-1/2" X 11" Cardstock - 161719

Price: \$10.00

[Add to Cart](#)



Lemon Lolly 8-1/2" X 11" Cardstock - 161720

Price: \$10.00

[Add to Cart](#)



Basic White 8-1/2" X 11" Cardstock - 159276

Price: \$10.50

[Add to Cart](#)



Pebbled Path Classic Stampin' Pad - 161648

Price: \$9.00

[Add to Cart](#)



Clear Block C - 118486

Price: \$8.00

[Add to Cart](#)



Clear Block G - 118489

Price: \$5.50

[Add to Cart](#)



VersaMark Pad - 102283

Price: \$9.50

[Add to Cart](#)



Embossing Additions Tool Kit - 159971

Price: \$27.00

[Add to Cart](#)



Heat Tool - 129053

Price: \$31.00

[Add to Cart](#)



Stampin' Up! Masking Paper - 155480

Price: \$7.00

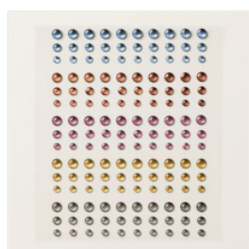
[Add to Cart](#)



Basics Embossing Powders - 155554

Price: \$18.00

[Add to Cart](#)



2023-2025 In Color™ Dots - 161620

Price: \$8.00

[Add to Cart](#)