

A Thank You Friend Card with the Darling Details Bundle

Mary Fish

maryfish@stampinpretty.com

<http://stampinpretty.com>



CUT YOUR CARD STOCK – DIMENSIONS:

- Very Vanilla Thick Card Stock:
Card Base – 5 1/2 x 8 1/2 – scored at 4 1/4
- Very Vanilla Card Stock:
Layer – 4 3/4 x 3 1/2
Stamped & Die-Cut Images – 5 1/2 x 4 1/4 (before die-cutting)
- Wild Wheat Card Stock:
Layer – 5 1/4 x 4
- Basic Black Card Stock:
Die-Cut Frame Layer – 4 7/8 x 3 5/8
Envelope Flap – 5 3/4 x 2 1/2 (before die-cutting)

A Thank You Friend Card with the Darling Details Bundle

Mary Fish

maryfish@stampinpretty.com

<http://stampinpretty.com>



1. Burnish the folds of the Very Vanilla card base with a Bone Folder.
2. Adhere the Wild Wheat layer to the card base with Multipurpose Liquid Glue.
3. Crop the Basic Black layer with a Stampin' Cut & Emboss Machine (Standard) and the largest Darling Details die.
4. Use a Clear Block C to stamp the sentiment in Tuxedo Black Memento Ink in the upper left corner of the Very Vanilla layer, as shown.
5. Adhere the frame to the Very Vanilla layer with a small amount of Multipurpose Liquid Glue.
6. Adhere to the card with Stampin' Dimensionals.
7. Use Clear Block B, C & D to stamp the "outline" images & sprigs in Tuxedo Black Memento Ink and "fill" images in Wild Wheat Classic Ink onto the Very Vanilla layer.
8. Crop the stamped images with a Stampin' Cut & Emboss Machine (Standard) and the coordinating Darling Details die.
9. Adhere together and to the card as shown with Stampin' Dimensionals.
10. **POP OF PERSONALITY!** Embellish with black Classic Matte Dots.
11. **PERFECT POLISH!** Crop the bottom edge of the Basic Black envelope flap layer with a Stampin' Cut & Emboss Machine (Standard) and the Darling Details edge die. Use Multipurpose Liquid Glue to adhere the Designer Series Paper to the outside flap of a Very Vanilla Medium Envelope.

Mary Fish
Independent
Stampin' UP! Demonstrator

[CLICK FOR BLOG POST](#)

[CLICK TO SHOP](#)

A Thank You Friend Card with the Darling Details Bundle

Mary Fish

maryfish@stampinpretty.com

<http://stampinpretty.com>



**Darling Details
Bundle - 161371**

Price: \$54.00

Add to Cart



**Darling Details
Photopolymer
Stamp Set
(English) - 161368**

Price: \$24.00

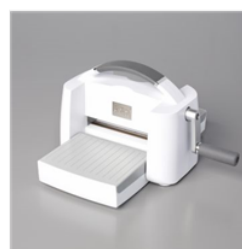
Add to Cart



**Darling Details
Dies - 161370**

Price: \$36.00

Add to Cart



**Stampin' Cut &
Emboss Machine -
149653**

Price: \$128.00

Add to Cart



**Paper Trimmer -
152392**

Price: \$26.00

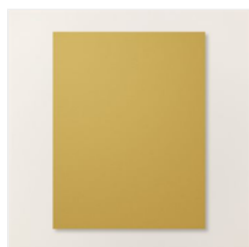
Add to Cart



**Very Vanilla 8-1/2"
X 11" Thick
Cardstock -
144237**

Price: \$9.00

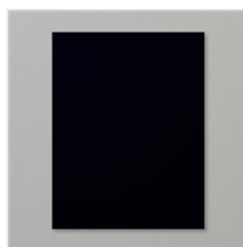
Add to Cart



**Wild Wheat 8-1/2"
X 11" Cardstock -
161725**

Price: \$10.00

Add to Cart



**Basic Black 8-1/2"
X 11" Cardstock -
121045**

Price: \$10.00

Add to Cart



**Very Vanilla 8-1/2"
X 11" Cardstock -
101650**

Price: \$10.50

Add to Cart



**Very Vanilla
Medium Envelopes
- 107300**

Price: \$8.50

Add to Cart



**Tuxedo Black
Memento Ink Pad -
132708**

Price: \$6.50

Add to Cart



**Wild Wheat
Classic Stampin'
Pad - 161651**

Price: \$9.00

Add to Cart



**Clear Block B -
117147**

Price: \$7.00

Add to Cart



**Clear Block C -
118486**

Price: \$8.00

Add to Cart



**Clear Block D -
118485**

Price: \$9.50

Add to Cart

A Thank You Friend Card with the Darling Details Bundle

Mary Fish

maryfish@stampinpretty.com

<http://stampinpretty.com>



Multipurpose
Liquid Glue -
110755

Price: \$5.50

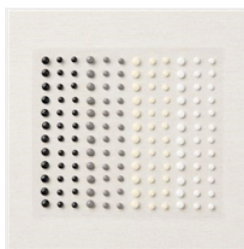
Add to Cart



Stampin'
Dimensionals -
104430

Price: \$4.25

Add to Cart



Classic Matte Dots
- 158146

Price: \$7.00

Add to Cart