

Minutes to a Modern Hello Card with Around the Bend

Mary Fish

maryfish@stampinpretty.com

<http://stampinpretty.com>



stampinpretty.com

Images © Stampin' Up!

CUT YOUR CARD STOCK – DIMENSIONS:

- Very Vanilla Thick Card Stock:
Card Base – 4 1/4 x 11, scored at 5 1/2
- Very Vanilla Card Stock:
Die-Cut Flower Centers – Scraps
Stamped Layer – 3 1/4 x 4 1/2
- Wild Wheat Card Stock:
Layer – 3 1/2 x 4 3/4
- Pretty Peacock Card Stock:
Die-Cut Flowers – 1 3/4 x 1 3/4 (qty 3)
- Bright & Beautiful Designer Series Paper:
Envelope Flap – 5 3/4 x 2 1/4
- Earthen Elegance Designer Series Paper:
Die-Cut Vase – 1 1/2 x 2

Minutes to a Modern Hello Card with Around the Bend

Mary Fish

maryfish@stampinpretty.com

<http://stampinpretty.com>



1. Begin by burnishing the fold of the Very Vanilla card base with a Bone Folder.
2. Adhere the Wild Wheat layer to the card base with Multipurpose Liquid Glue.
3. Use a Clear Block C to stamp the sentiment (Around the Bend) in Copper Clay Classic Ink onto the Very Vanilla layer as shown.
4. Adhere to the card with Stampin' Dimensionals.
5. Use a Stampin' Cut & Emboss Machine (Standard or Mini) to crop the following:
 - Earthen Elegance Designer Series Paper – Vase (Earthen Textures Dies)
 - Pretty Peacock – Flowers (Around the Bend Dies)
 - Very Vanilla – Flower Centers (Around the Bend Dies)
6. Adhere a strip of Stampin' Seal + adhesive to the back of the vase. Wrap several times with Very Vanilla Baker's Twine Essentials, securing with a bow as shown.
7. Adhere the Very Vanilla flower center to the flowers with Multipurpose Liquid Glue.
8. Adhere all pieces to the card with Stampin' Dimensionals as shown.
9. **POP OF PERSONALITY!** Embellish the flower centers with the smallest Copper Clay 2023-2025 In Color Dots.
10. **PERFECT POLISH!** Use Multipurpose Liquid Glue to adhere the Designer Series Paper to the outside flap of a Basic White Medium Envelope. You can see my video demonstration with tips on adding designer paper to an envelope flap [here](#).

Mary Fish
Independent
Stampin' UP! Demonstrator

[CLICK FOR BLOG POST](#)

[CLICK TO SHOP](#)

Minutes to a Modern Hello Card with Around the Bend

Mary Fish

maryfish@stampinpretty.com

<http://stampinpretty.com>



Around The Bend
Photopolymer
Stamp Set
(English) - 160648

Price: \$25.00

[Add to Cart](#)



Around The Bend
Dies - 160649

Price: \$33.00

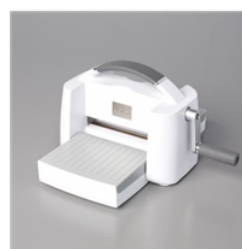
[Add to Cart](#)



Earthen Textures
Dies - 161513

Price: \$35.00

[Add to Cart](#)



Stampin' Cut &
Emboss Machine -
149653

Price: \$128.00

[Add to Cart](#)



Mini Stampin' Cut
& Emboss
Machine - 150673

Price: \$66.00

[Add to Cart](#)



Paper Trimmer -
152392

Price: \$26.00

[Add to Cart](#)



Multipurpose
Liquid Glue -
110755

Price: \$5.50

[Add to Cart](#)



Stampin'
Dimensionals -
104430

Price: \$4.25

[Add to Cart](#)



Bone Folder -
102300

Price: \$7.00

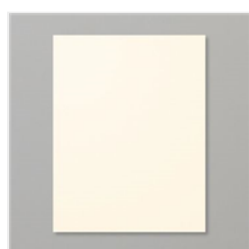
[Add to Cart](#)



Very Vanilla 8-1/2"
X 11" Thick
Cardstock -
144237

Price: \$9.00

[Add to Cart](#)



Very Vanilla 8-1/2"
X 11" Cardstock -
101650

Price: \$10.50

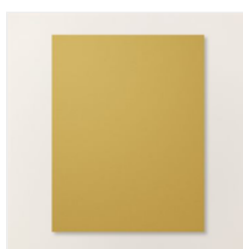
[Add to Cart](#)



Pretty Peacock 8-
1/2" X 11"
Cardstock -
150880

Price: \$10.00

[Add to Cart](#)



Wild Wheat 8-1/2"
X 11" Cardstock -
161725

Price: \$10.00

[Add to Cart](#)



Bright & Beautiful
6" X 6" (15.2 X
15.2 Cm) Designer
Series Paper -
161449

Price: \$12.50

[Add to Cart](#)



Fresh As A Daisy
12" X 12" (30.5 X
30.5 Cm) Designer
Series Paper -
161289

Price: \$12.50

[Add to Cart](#)

Minutes to a Modern Hello Card with Around the Bend

Mary Fish

maryfish@stampinpretty.com

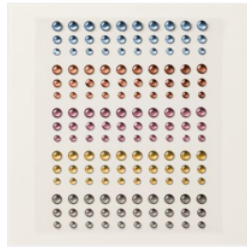
<http://stampinpretty.com>



Baker's Twine
Essentials Pack -
155475

Price: \$11.00

Add to Cart



2023-2025 In
Color™ Dots -
161620

Price: \$8.00

Add to Cart



Stampin' Seal+ -
149699

Price: \$12.00

Add to Cart



Copper Clay
Classic Stampin'
Pad - 161647

Price: \$9.00

Add to Cart



Clear Block C -
118486

Price: \$8.00

Add to Cart