

Building a Bright & Beautiful Birthday Card

Mary Fish
maryfish@stampinpretty.com
<http://stampinpretty.com>



CUT YOUR CARD STOCK – DIMENSIONS:

- Basic White Thick Card Stock:
Card Base – 5 1/2 x 8 1/2, scored at 4 1/4
- Berry Burst Card Stock
Layers – 5 1/4 x 2 1/4, 4 x 2 3/4
- Basic White Card Stock:
Sentiment Die-Cut – 2 1/2 x 1 1/2 (before die-cutting)
- Bright & Beautiful Designer Series Paper:
Layers – 5 x 2 (dots), 3 3/4 x 2 1/2 (stripes)
Envelope Flap – 5 3/4 x 2 1/4

Building a Bright & Beautiful Birthday Card

Mary Fish

maryfish@stampinpretty.com

<http://stampinpretty.com>



1. Begin by burnishing the fold of the Basic White Thick card base with a Bone Folder.
2. Adhere the Bright & Beautiful Designer Series Paper layers to the coordinating Berry Burst layers with Multipurpose Liquid Glue.
3. Adhere the dots layer to the card base with Multipurpose Liquid Glue.
4. Wrap with white Baker's Twine Essentials, securing with a bow.
5. Adhere to the card as shown with Stampin' Dimensionals.
6. Use a Clear Block C to stamp the sentiment (Biggest Wish Stamp Set) in Berry Burst Classic Ink onto the Basic White layer.
7. Crop the stamped sentiment with a [Stampin' Cut & Emboss Machine](#) (Standard or Mini) and the 2 1/4 x 1 1/4 Something Fancy die.
8. Adhere to the card with Stampin' Dimensionals.
9. **POP OF PERSONALITY!** Embellish with Berry Burst dots from the Tinsel Gems Four-Pack.
10. **PERFECT POLISH!** Use Multipurpose Liquid Glue to adhere the Designer Series Paper to the outside flap of a Basic White Medium Envelope. You can see my video demonstration with tips on adding designer paper to an envelope flap [here](#).

Mary Fish
Independent
Stampin' UP! Demonstrator

[CLICK FOR BLOG POST](#)

[CLICK TO SHOP](#)

Building a Bright & Beautiful Birthday Card

Mary Fish

maryfish@stampinpretty.com

<http://stampinpretty.com>



**Biggest Wish
Photopolymer
Stamp Set
(English) - 155052**

Price: \$17.00

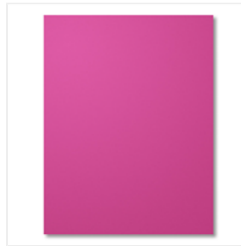
[Add to Cart](#)



**Bright & Beautiful
6" X 6" (15.2 X
15.2 Cm) Designer
Series Paper -
161449**

Price: \$12.50

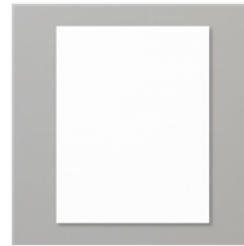
[Add to Cart](#)



**Berry Burst 8-1/2"
X 11" Cardstock -
144243**

Price: \$10.00

[Add to Cart](#)



**Basic White 8-1/2"
X 11" Cardstock -
159276**

Price: \$10.50

[Add to Cart](#)



**Paper Trimmer -
152392**

Price: \$26.00

[Add to Cart](#)



**Multipurpose
Liquid Glue -
110755**

Price: \$5.50

[Add to Cart](#)



**Basic White
Medium Envelopes
- 159236**

Price: \$8.50

[Add to Cart](#)



**Stampin'
Dimensionals -
104430**

Price: \$4.25

[Add to Cart](#)



**Bone Folder -
102300**

Price: \$7.00

[Add to Cart](#)



**Clear Block D -
118485**

Price: \$9.50

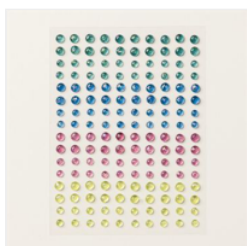
[Add to Cart](#)



**Berry Burst Classic
Stampin' Pad -
147143**

Price: \$9.00

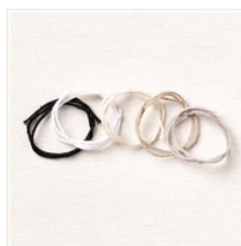
[Add to Cart](#)



**Tinsel Gems Four-
Pack - 161623**

Price: \$8.00

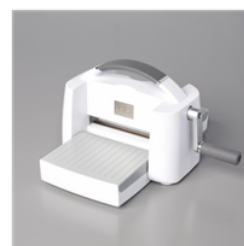
[Add to Cart](#)



**Baker's Twine
Essentials Pack -
155475**

Price: \$11.00

[Add to Cart](#)



**Stampin' Cut &
Emboss Machine -
149653**

Price: \$128.00

[Add to Cart](#)



**Mini Stampin' Cut
& Emboss
Machine - 150673**

Price: \$66.00

[Add to Cart](#)

Building a Bright & Beautiful Birthday Card

Mary Fish

maryfish@stampinpretty.com

<http://stampinpretty.com>



Something Fancy
Dies - 160424

Price: \$28.00

Add to Cart