

Paper Crafting Perfection for Spring Cards!

with the Sending Smiles Bundle

Mary Fish

maryfish@stampinpretty.com

<http://stampinpretty.com>



CUT YOUR CARD STOCK - DIMENSIONS:

- Basic White Thick Card Stock:
Card Base – 5 1/2 x 8 1/2, scored at 4 1/4
- Basic White Card Stock
Stamped Layer – 5 x 3 3/4
Sentiment Die-cut- 3 x 3/4 (before die-cutting)
- Vellum Card Stock:
Die-cut – 4 x 2
- Early Espresso Card Stock (adhered to an Adhesive Sheet):
Die-cut – 4 x 2
- Neutrals 6x6 Designer Series Paper:
Envelope Flap – 5 3/4 x 2 1/4

Paper Crafting Perfection for Spring Cards!

with the Sending Smiles Bundle

Mary Fish

maryfish@stampinpretty.com

<http://stampinpretty.com>



1. Begin by burnishing the fold of the Basic White Thick card base with a Bone Folder.
2. Use Clear Blocks to stamp the stems in Mossy Meadow Classic Ink at random angles as shown.
3. Use Clear Blocks to stamp the flower petals in the following Classic Ink colors: Gorgeous Grape, Daffodil Delight and Calypso Coral.
4. Finish it off by stamping the flower centers in Early Espresso Classic Ink.
5. Adhere the stamped layer to the card base with Stampin' Dimensionals.
6. Use a Clear Block to stamp the sentiment (Sending Smiles Stamp Set) in Early Espresso Classic Ink onto the Basic White layer.
7. Crop with a [Stampin' Cut & Emboss Machine](#) (Standard or Mini) and the coordinating Sending die.
8. Adhere as shown with Stampin' Dimensionals.
9. Crop the Vellum and Early Espresso (adhered to an Adhesive Sheet) layers with a [Stampin' Cut & Emboss Machine](#) (Standard or Mini) and the coordinating Sending dies.
10. Remove the protective backing from the Early Espresso die-cut and adhere to the vellum die-cut.
11. Adhere to the die-cut sentiment with small amounts of Multipurpose Liquid Glue (only where the die-cuts touch).
12. **PERFECT POLISH!** Use Multipurpose Liquid Glue to adhere the Designer Series Paper to the outside flap of a Basic White Medium Envelope. You can see my video demonstration with tips on adding designer paper to an envelope flap [here](#).

Mary Fish
Independent
Stampin' UP! Demonstrator

[CLICK FOR BLOG POST](#)

[CLICK TO SHOP](#)

Paper Crafting Perfection for Spring Cards!

with the Sending Smiles Bundle

Mary Fish

maryfish@stampinpretty.com

<http://stampinpretty.com>



Sending Smiles Bundle (English) - 158707

Price: \$49.50

Add to Cart



Sending Smiles Photopolymer Stamp Set (English) - 158701

Price: \$22.00

Add to Cart



Sending Dies (English) - 159271

Price: \$33.00

Add to Cart



Paper Trimmer - 152392

Price: \$25.00

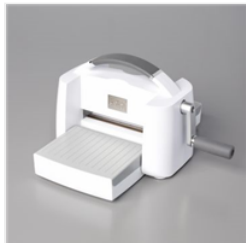
Add to Cart



Mini Stampin' Cut & Emboss Machine - 150673

Price: \$63.00

Add to Cart



Stampin' Cut & Emboss Machine - 149653

Price: \$125.00

Add to Cart



Bone Folder - 102300

Price: \$7.00

Add to Cart



Multipurpose Liquid Glue - 110755

Price: \$4.00

Add to Cart



Stampin' Dimensionals - 104430

Price: \$4.25

Add to Cart



Basic White 8-1/2" X 11" Thick Cardstock - 159229

Price: \$8.75

Add to Cart



Basic White 8-1/2" X 11" Cardstock - 159276

Price: \$10.25

Add to Cart



Basic White Medium Envelopes - 159236

Price: \$7.50

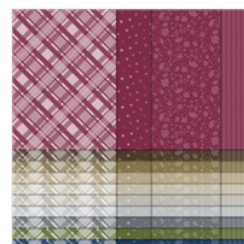
Add to Cart



Adhesive Sheets - 152334

Price: \$11.00

Add to Cart



Neutrals 6" X 6" (15.2 X 15.2 Cm) Designer Series Paper - 159257

Sale: \$8.40

Price: \$12.00

Add to Cart



Clear Block Bundle - 118491

Price: \$76.00

Add to Cart

Paper Crafting Perfection for Spring Cards!

with the Sending Smiles Bundle

Mary Fish

maryfish@stampinpretty.com

<http://stampinpretty.com>



Mossy Meadow
Classic Stampin'
Pad - 147111

Price: \$8.00

Add to Cart



Gorgeous Grape
Classic Stampin'
Pad - 147099

Price: \$8.00

Add to Cart



Daffodil Delight
Classic Stampin'
Pad - 147094

Price: \$8.00

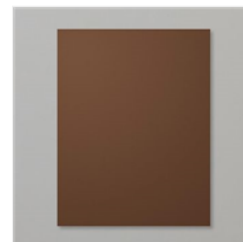
Add to Cart



Calypso Coral
Classic Stampin'
Pad - 147101

Price: \$8.00

Add to Cart



Early Espresso 8-
1/2" X 11"
Cardstock -
119686

Price: \$9.25

Add to Cart



Vellum 8-1/2" X
11" Cardstock -
101856

Price: \$10.00

Add to Cart



Early Espresso
Classic Stampin'
Pad - 147114

Price: \$8.00

Add to Cart