

A Friend Card with Fresh as a Daisy Suite

Mary Fish
maryfish@stampinpretty.com
<http://stampinpretty.com>


stampin' pretty
step-by-step tutorial



CUT YOUR CARD STOCK - DIMENSIONS:

- Basic White Thick Card Stock:
Card Base – 4 1/4 x 11, scored at 5 1/2
- Basic White Card Stock
Die-cut Daisy – 2 3/4 x 2 1/2
Stamped Sentiment – 2 3/4 x 1/4
- Wild Wheat Card Stock:
Layers – 4 x 5 1/4
- Bubble Bath Card Stock:
Die-Cut – 2 1/2 x 2 1/2 (before die-cutting)
- Moody Mauve Card Stock:
Die-Cut – 1 1/2 x 1 1/2 (before die-cutting)
- Vellum Card Stock:
Die-Cut – 2 3/4 x 2 3/4 (before die-cutting)
- Fresh as a Daisy Designer Series Paper:
Layer – 3 1/4 x 5
Envelope Flap – 5 3/4 x 2 1/4

A Friend Card with Fresh as a Daisy Suite

Mary Fish
maryfish@stampinpretty.com
<http://stampinpretty.com>



1. Begin by burnishing the fold of the Basic White Thick card base with a Bone Folder.
2. Layer and adhere the Fresh as a Daisy DSP Layer to the Wild Wheat layer with Multipurpose Liquid Glue.
3. Wrap the layers with a piece of Wild Wheat 3/8 Textured Ribbon, securing to the back side with Stampin' Seal +.
4. Adhere to the card with Multipurpose Liquid Glue.
5. Tie a bow of white Baker's Twine Essentials around the Wild Wheat ribbon as shown.
6. Crop the Vellum with a [Stampin' Cut & Emboss Machine](#) (Standard or Mini) and the Stylish Shapes 2 1/2 stitched circle die.
7. Crop the Basic White, Bubble Bath, and Moody Mauve layers with the Cheerful Daisies dies.
8. Layer and adhere as shown with Multipurpose Liquid Glue.
9. Adhere to the vellum and to the card base with Stampin' Dimensionals.
10. Use a Clear Block to stamp the sentiment (Cheerful Daisies Stamp Set) in Wild Wheat Classic Ink onto the Basic White layer.
11. Snip the ends at an angle with Paper Snips.
12. Adhere as shown with Stampin' Dimensionals.
13. **POP OF PERSONALITY!** Embellish with Copper Clay Adhesive-Backed Solid Gems.
14. **PERFECT POLISH!** Use Multipurpose Liquid Glue to adhere the Designer Series Paper to the outside flap of a Basic White Medium Envelope. You can see my video demonstration with tips on adding designer paper to an envelope flap [here](#).

Mary Fish
Independent
Stampin' UP! Demonstrator

[CLICK FOR BLOG POST](#)

[CLICK TO SHOP](#)

A Friend Card with Fresh as a Daisy Suite

Mary Fish
maryfish@stampinpretty.com
<http://stampinpretty.com>



Paper Trimmer -
152392

Price: \$25.00

Add to Cart



Mini Stampin' Cut
& Emboss
Machine - 150673

Price: \$63.00

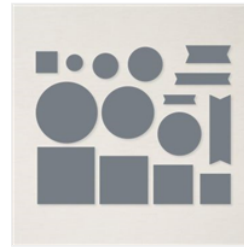
Add to Cart



Stampin' Cut &
Emboss Machine -
149653

Price: \$125.00

Add to Cart



Stylish Shapes
Dies - 159183

Price: \$30.00

Add to Cart



Bone Folder -
102300

Price: \$7.00

Add to Cart



Multipurpose
Liquid Glue -
110755

Price: \$4.00

Add to Cart



Stampin'
Dimensionals -
104430

Price: \$4.25

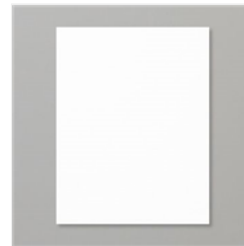
Add to Cart



Mini Stampin'
Dimensionals -
144108

Price: \$4.25

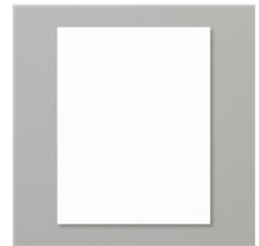
Add to Cart



Basic White 8-1/2"
X 11" Thick
Cardstock -
159229

Price: \$8.75

Add to Cart



Basic White 8-1/2"
X 11" Cardstock -
159276

Price: \$10.25

Add to Cart



Vellum 8-1/2" X
11" Cardstock -
101856

Price: \$10.00

Add to Cart



Basic White
Medium Envelopes
- 159236

Price: \$7.50

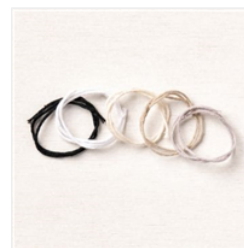
Add to Cart



Clear Block G -
118489

Price: \$5.00

Add to Cart



Baker's Twine
Essentials Pack -
155475

Price: \$11.00

Add to Cart