

There's Nothing Basic about Basic Borders Dies

Mary Fish

maryfish@stampinpretty.com

<http://stampinpretty.com>



CUT YOUR CARD STOCK - DIMENSIONS:

- Basic White Thick Card Stock:
 - Card Base – 5 1/2 x 8 1/2, scored at 4 1/4
 - Curved Layer – 4 3/4 x 3 1/2 (before die-cutting)
- Basic White Card Stock:
 - Stamped Flowers – 3 x 3 (Qty 3) (before punching)
- Night of Navy Card Stock:
 - Layer – 5 1/4 x 4
 - Curved Layer – 4 3/4 x 2 (before die-cutting)
- Balmy Blue Card Stock:
 - Layer – 5 x 3 3/4
 - Curved Layer – 4 3/4 x 1 3/4 (before die-cutting)
- Regency Park Designer Series Paper:
 - Layer – 4 3/4 x 3 1/2
 - Envelope Flap – 5 3/4 x 2 3/4 (before die-cutting)

There's Nothing Basic about Basic Borders Dies

Mary Fish

maryfish@stampinpretty.com

<http://stampinpretty.com>



1. Begin by burnishing the fold of the card base with a Bone Folder.
2. Layer and adhere the Night of Navy, Balmy Blue, and Regency Park layers together and to the card base with Multipurpose Liquid Glue.
3. Layer the Night of Navy, and Balmy Blue and use a [Stampin' Cut & Emboss Machine](#) to crop 1/4 off both pieces at the same time with the curved Basic Borders Die.
4. Use the curved edge of the Night of Navy or Balmy Blue die-cut as a template to line up the die to crop the Basic White layer.
5. Use a [Stamparatus](#) or a Clear Block to stamp the sentiments (Sentimental Park Stamp Set) in Night of Navy Classic Ink as shown onto the Balmy Blue layer.
6. Adhere all three pieces together with Multipurpose Liquid Glue and to the card with Stampin' Dimensionals.
7. Use a [Stamparatus](#) to stamp the flowers (Petal Park Stamp Set) in Balmy Blue and Night of Navy Classic Ink as shown; a two-step process.
8. Crop the stamped flowers with the coordinating Petal Park Builder Punch.
9. Adhere the large flowers to the card with Stampin' Dimensionals and the small flowers to the card with Multipurpose Liquid Glue.
10. **POP OF PERSONALITY!** Embellish the flower centers and sentiment with the Night of Navy Enamel Dot Essentials.
11. **PERFECT POLISH!** Crop the bottom edge of the envelope flap DSP with a [Stampin' Cut & Emboss Machine](#) (Standard) and the Basic Borders stitched curved die. Use Multipurpose Liquid Glue to adhere the Designer Series Paper to the outside flap of a Basic White Medium Envelope. You can see my video demonstration with tips on adding designer paper to an envelope flap [here](#).

Mary Fish

Independent
Stampin' UP! Demonstrator

[CLICK FOR BLOG POST](#)

[CLICK TO SHOP](#)

There's Nothing Basic about Basic Borders Dies

Mary Fish

maryfish@stampinpretty.com

<http://stampinpretty.com>



**Sentimental Park
Photopolymer
Stamp Set
(English) - 160561**

Price: \$24.00

Add to Cart



**Petal Park Bundle
(English) - 160577**

Price: \$37.75

Add to Cart



**Petal Park
Photopolymer
Stamp Set -
160571**

Price: \$23.00

Add to Cart



**Petal Park Builder
Punch - 160576**

Price: \$19.00

Add to Cart



**Basic White 8-1/2"
X 11" Thick
Cardstock -
159229**

Price: \$8.75

Add to Cart



**Basic White 8-1/2"
X 11" Cardstock -
159276**

Price: \$10.25

Add to Cart



**Balmy Blue 8-1/2"
X 11" Cardstock -
146982**

Price: \$9.25

Add to Cart



**Night Of Navy 8-
1/2" X 11"
Cardstock -
100867**

Price: \$9.25

Add to Cart



**Regency Park 6" X
6" (15.2 X 15.2
Cm) Designer
Series Paper -
160559**

Price: \$12.00

Add to Cart



**Bone Folder -
102300**

Price: \$7.00

Add to Cart



**Paper Trimmer -
152392**

Price: \$25.00

Add to Cart



**Stamparatus -
146276**

Price: \$49.00

Add to Cart



**Night Of Navy
Classic Stampin'
Pad - 147110**

Price: \$8.00

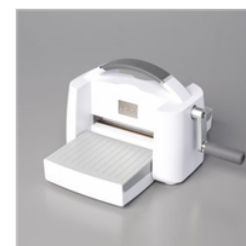
Add to Cart



**Balmy Blue Classic
Stampin' Pad -
147105**

Price: \$8.00

Add to Cart



**Stampin' Cut &
Emboss Machine -
149653**

Price: \$125.00

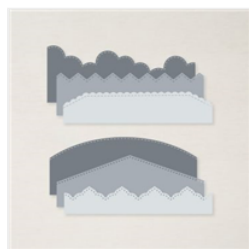
Add to Cart

There's Nothing Basic about Basic Borders Dies

Mary Fish

maryfish@stampinpretty.com

<http://stampinpretty.com>



Basic Borders Dies
- 155558

Price: \$29.00

Add to Cart



Stampin'
Dimensionals -
104430

Price: \$4.25

Add to Cart



Multipurpose
Liquid Glue -
110755

Price: \$4.00

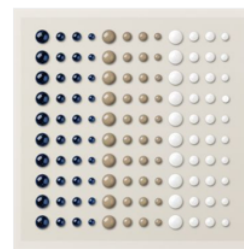
Add to Cart



Basic White
Medium Envelopes
- 159236

Price: \$7.50

Add to Cart



Enamel Dot
Essentials -
160751

Price: \$8.00

Add to Cart