

Gorgeous Gatefold Card Using the Hello, Irresistible Suite!

Mary Fish
maryfish@stampinpretty.com
<http://stampinpretty.com>



CUT YOUR CARD STOCK – DIMENSIONS:

- Basic White Thick Card Stock:
Card Base – 5 1/2 x 8 1/2, scored at 2 1/8 and 6 3/8
- Basic White Card Stock:
Belly Band – 9 1/2 x 1 3/4
Die-Cut – 3 x 3 (before die-cutting)
- Hello, Irresistible Designer Series Paper:
Layers – 1 7/8 x 5 1/4 (qty 2), 1 5/8 x 5 (qty 2)
Die-cut Leaves – die-cut image direct from DSP
Sentiment Die-Cut- 2 x 2 (before die-cutting)
Belly Band Layer – 4 1/2 x 1 1/2 (qty 2)
Envelope Flap – 5 3/4 x 2 1/4

Gorgeous Gatefold Card Using the Hello, Irresistible Suite!

Mary Fish
maryfish@stampinpretty.com
<http://stampinpretty.com>



PROJECT TUTORIAL:

1. Begin by burnishing the two folds of the gatefold card base with a Bone Folder.
2. Layer and adhere the Designer Series Paper layers together and to the card base with Stampin' Seal. Repeat for the opposite side.
3. Adhere the two pieces of belly band Designer Series Paper to the Basic White belly band strip with Stampin' Seal.
4. Lay the card in the center and mark/score the belly band to wrap around the card. Leave a wee bit of room to allow it to slide on and off.
5. Use Stampin' Seal + (extra strength) to adhere the belly band ends together, placing it where it will be covered by the sentiment die-cut.
6. Crop the Basic White layer with a [Stampin' Cut & Emboss Machine](#) (Standard or Mini) and the Painted Labels die.
7. Adhere to the belly band as shown with Stampin' Dimensionals.
8. Thread white Baker's Twine Essentials through the die-cut twice as shown, securing with a bow.

Gorgeous Gatefold Card Using the Hello, Irresistible Suite!

Mary Fish

maryfish@stampinpretty.com

<http://stampinpretty.com>



9. Crop the leaves from the Hello Irresistible DSP with a [Stampin' Cut & Emboss Machine](#) (Standard or Mini) and the coordinating Irresistible Blooms dies.
10. Use a [Stamparatus](#) to stamp the sentiment in Versamark Ink onto a piece of Hello, Irresistible Designer Series Paper that has been rubbed with an Embossing Buddy (Embossing Additions Took Kit).
11. Cover with white Basics Embossing Powder. Tap to remove excess. Set with a Heat Tool.
12. Crop with a [Stampin' Cut & Emboss Machine](#) (Standard or Mini) and the 2nd smallest Stylish Shapes circle die.
13. Adhere as shown with Stampin' Dimensionals.
14. **POP OF PERSONALITY!** Embellish with Loose Frosted Dots adhered with a Fine-Tip Glue Pen.
15. **PERFECT POLISH!** Use Multipurpose Liquid Glue to adhere the Designer Series Paper to the outside flap of a Basic White Medium Envelope. You can see my video demonstration with tips on adding designer paper to an envelope flap [here](#).

Mary Fish

Independent
Stampin' UP! Demonstrator

click for blog post

click to shop

Gorgeous Gatefold Card Using the Hello, Irresistible Suite!

Mary Fish

maryfish@stampinpretty.com

<http://stampinpretty.com>



Hello, Irresistible Suite Collection (English) - 161154

Price: \$74.50

Add to Cart



Irresistible Blooms Bundle (English) - 161150

Price: \$54.00

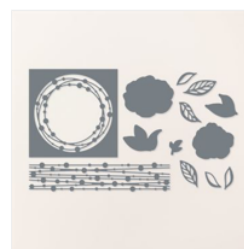
Add to Cart



Irresistible Blooms Cling Stamp Set (English) - 161140

Price: \$25.00

Add to Cart



Irresistible Blooms Dies - 161149

Price: \$35.00

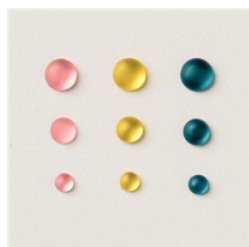
Add to Cart



Hello, Irresistible 6" X 6" (15.2 X 15.2 Cm) Designer Series Paper - 161139

Price: \$12.50

Add to Cart



Loose Frosted Dots - 161153

Price: \$8.00

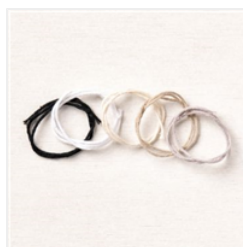
Add to Cart



Bone Folder - 102300

Price: \$7.00

Add to Cart



Baker's Twine Essentials Pack - 155475

Price: \$11.00

Add to Cart



Paper Trimmer - 152392

Price: \$25.00

Add to Cart



Stamparatus - 146276

Price: \$49.00

Add to Cart



Stampin' Dimensionals - 104430

Price: \$4.25

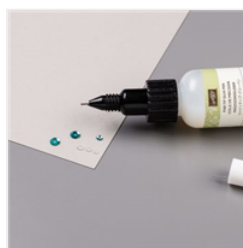
Add to Cart



Stampin' Seal - 152813

Price: \$8.00

Add to Cart



Fine-Tip Glue Pen - 138309

Price: \$7.00

Add to Cart



VersaMark Pad - 102283

Price: \$9.50

Add to Cart



Basics Embossing Powders - 155554

Price: \$18.00

Add to Cart

Gorgeous Gatefold Card Using the Hello, Irresistible Suite!

Mary Fish

maryfish@stampinpretty.com

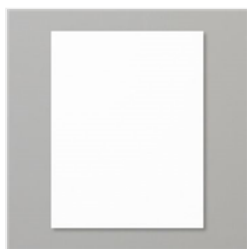
<http://stampinpretty.com>



Heat Tool - 129053

Price: \$30.00

Add to Cart



Basic White 8-1/2"
X 11" Thick
Cardstock -
159229

Price: \$8.75

Add to Cart



Basic White 8-1/2"
X 11" Cardstock -
159276

Price: \$10.25

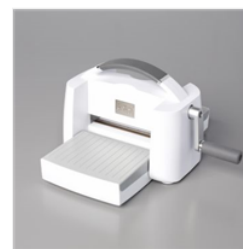
Add to Cart



Mini Stampin' Cut
& Emboss
Machine - 150673

Price: \$63.00

Add to Cart



Stampin' Cut &
Emboss Machine -
149653

Price: \$125.00

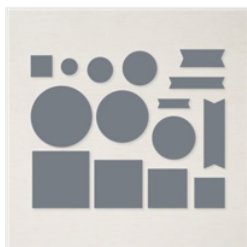
Add to Cart



Painted Labels
Dies - 151605

Price: \$35.00

Add to Cart



Stylish Shapes
Dies - 159183

Price: \$30.00

Add to Cart



Basic White
Medium Envelopes
- 159236

Price: \$7.50

Add to Cart