

# This Favored Flowers Card Is Simply Dreamy!

Mary Fish  
[maryfish@stampinpretty.com](mailto:maryfish@stampinpretty.com)  
<http://stampinpretty.com>



## CUT YOUR CARD STOCK - DIMENSIONS:

- Basic White Thick Card Stock:  
Card Base – 4 1/4 x 11, scored at 5 1/2
- Evening Evergreen Card Stock:  
Layer - 3 1/4 x 4 1/2
- Vellum Card Stock:  
Layer – 3 1/2 x 1 1/2
- Basic White Card Stock:  
Die-Cut Sentiment - 3 x 2 1/2 (before die-cutting)
- Favored Flowers Designer Series Paper:  
Layers - 4 x 5 1/4, 3 x 4 1/4  
Envelope Flap – 5 3/4 x 2 1/4

# This Favored Flowers Card Is Simply Dreamy!

Mary Fish  
[maryfish@stampinpretty.com](mailto:maryfish@stampinpretty.com)  
<http://stampinpretty.com>



1. Begin by burnishing the fold of the card base with a Bone Folder.
2. Adhere the Favored Flowers DSP to the card base with Stampin' Seal.
3. Layer and adhere the Favored Flowers DSP to the Evening Evergreen layer together with Stampin' Seal and to the card with Stampin' Dimensionals.
4. Flag the end of the Vellum card stock with a [Stampin' Cut & Emboss Machine](#) (Standard or Mini) and the Beautiful Shapes 2nd smallest hexagon die.
5. Wrap with Linen Thread around the Vellum as shown, securing with a bow.
6. Tie another bow of Linen Thread around the knot of the previous bow.
7. Trim the ends as shown with Paper Snips.
8. Adhere the card as shown with Stampin' Dimensionals.
9. Use a [Stamparatus](#) to stamp the sentiment Evening Evergreen Classic Ink onto the Basic White layer.
10. Crop with a [Stampin' Cut & Emboss Machine](#) (Standard or Mini) and the coordinating Beautiful Shapes hexagon die (largest).
11. Adhere to the card as shown with Stampin' Dimensionals.
12. **POP OF PERSONALITY!** Embellish with a single Petal Pink Solid Faceted Gems!
13. **PERFECT POLISH!** Use Multipurpose Liquid Glue to adhere the Designer Series Paper to the outside flap of a Basic White Medium Envelope. You can see my video demonstration with tips on adding designer paper to an envelope flap [here](#).

# This Favored Flowers Card Is Simply Dreamy!

Mary Fish  
[maryfish@stampinpretty.com](mailto:maryfish@stampinpretty.com)  
<http://stampinpretty.com>

Mary Fish  
Independent  
Stampin' UP! Demonstrator

click for blog post

click to shop

# This Favored Flowers Card Is Simply Dreamy!

Mary Fish

[maryfish@stampinpretty.com](mailto:maryfish@stampinpretty.com)

<http://stampinpretty.com>



**Covered In  
Sunshine Cling  
Stamp Set  
(English) - 160726**

Price: \$23.00

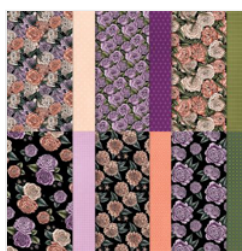
[Add to Cart](#)



**Beautiful Shapes  
Dies - 158046**

Price: \$29.00

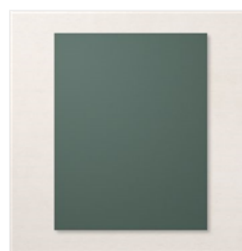
[Add to Cart](#)



**Favored Flowers  
12" X 12" (30.5 X  
30.5 Cm) Designer  
Series Paper -  
160833**

Price: \$0.00

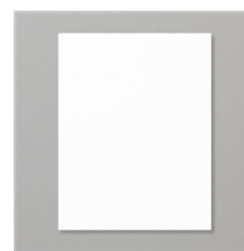
[Add to Cart](#)



**Evening Evergreen  
8-1/2" X 11"  
Cardstock -  
155574**

Price: \$9.25

[Add to Cart](#)



**Basic White 8-1/2"  
X 11" Thick  
Cardstock -  
159229**

Price: \$8.75

[Add to Cart](#)



**Basic White 8-1/2"  
X 11" Cardstock -  
159276**

Price: \$10.25

[Add to Cart](#)



**Vellum 8-1/2" X  
11" Cardstock -  
101856**

Price: \$10.00

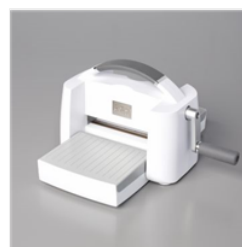
[Add to Cart](#)



**Paper Trimmer -  
152392**

Price: \$25.00

[Add to Cart](#)



**Stampin' Cut &  
Emboss Machine -  
149653**

Price: \$125.00

[Add to Cart](#)



**Mini Stampin' Cut  
& Emboss  
Machine - 150673**

Price: \$63.00

[Add to Cart](#)



**Stamparatus -  
146276**

Price: \$49.00

[Add to Cart](#)



**Evening Evergreen  
Classic Stampin'  
Pad - 155576**

Price: \$8.00

[Add to Cart](#)



**Bone Folder -  
102300**

Price: \$7.00

[Add to Cart](#)



**Stampin'  
Dimensionals -  
104430**

Price: \$4.25

[Add to Cart](#)



**Multipurpose  
Liquid Glue -  
110755**

Price: \$4.00

[Add to Cart](#)

# This Favored Flowers Card Is Simply Dreamy!

Mary Fish

[maryfish@stampinpretty.com](mailto:maryfish@stampinpretty.com)

<http://stampinpretty.com>



Paper Snips  
Scissors - 103579

Price: \$11.00

Add to Cart



Solid Faceted  
Gems - 159189

Price: \$8.00

Add to Cart



Linen Thread -  
104199

Price: \$5.00

Add to Cart