

Making a Statement with the Stampin' Up! Fancy Flora Suite

Mary Fish
maryfish@stampinpretty.com
<http://stampinpretty.com>


stampin' pretty
step-by-step tutorial



CUT YOUR CARD STOCK - DIMENSIONS:

- Basic White Thick Card Stock:
Card Base – 5 1/2 x 8 1/2, scored at 4 1/4
- Calypso Coral Card Stock:
Layer – 5 x 3 3/4
Die-Cut Layer – 3 1/2 x 2 (before die-cutting)
- Basic White Card Stock:
Sentiment Die-Cut – 3 x 1 1/2 (before die-cutting)
- Fancy Flora Designer Series Paper:
Layer – 4 3/4 x 3 1/2
Envelope Flap – 5 3/4 x 2 1/4

Making a Statement with the Stampin' Up! Fancy Flora Suite

Mary Fish
maryfish@stampinpretty.com
<http://stampinpretty.com>



1. Begin by burnishing the fold of the card base with a Bone Folder.
2. Adhere the Fancy Flora DSP layer to the Calypso Coral layer with Stampin' Seal.
3. Crop the Calypso Coral layer with a [Stampin' Cut & Emboss Machine](#) (Standard or Mini) and the coordinating Something Fancy label die.
4. Adhere the die-cut to the card as shown with Stampin' Dimensionals.
5. Wrap all layers as shown with Pool Party Ribbon and secure with a bow.
6. Use a [Stamparatus](#) to stamp the sentiment in Soft Suede Classic Ink onto the Basic White layer.
7. Crop with a [Stampin' Cut & Emboss Machine](#) (Standard or Mini) and the coordinating Something Fancy label die.
8. Adhere to the card as shown with Stampin' Dimensionals.
9. **POP OF PERSONALITY!** Embellish the sentiment with three Iridescent Pastel Gems.
10. **PERFECT POLISH!** Use Multipurpose Liquid Glue to adhere the Designer Series Paper to the outside flap of a Basic White Medium Envelope. You can see my video demonstration with tips on adding designer paper to an envelope flap [here](#).

Mary Fish
Independent
Stampin' UP! Demonstrator

Making a Statement with the Stampin' Up! Fancy Flora Suite

Mary Fish
maryfish@stampinpretty.com
<http://stampinpretty.com>

click for blog post

click to shop

Making a Statement with the Stampin' Up! Fancy Flora Suite

Mary Fish

maryfish@stampinpretty.com

<http://stampinpretty.com>



Fancy Flora Suite Collection (English) - 160431

Price: \$139.50

Add to Cart



Something Fancy Bundle (English) - 160425

Price: \$45.75

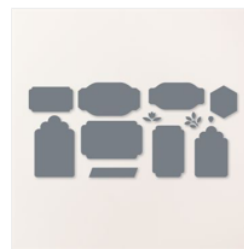
Add to Cart



Something Fancy Cling Stamp Set (English) - 160416

Price: \$23.00

Add to Cart



Something Fancy Dies - 160424

Price: \$28.00

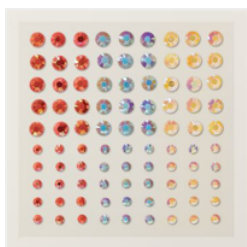
Add to Cart



Fancy Flora 6" X 6" (15.2 X 15.2 Cm) Designer Series Paper - 160413

Price: \$12.00

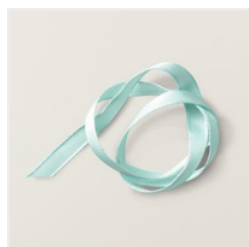
Add to Cart



Iridescent Pastel Gems - 160429

Price: \$8.00

Add to Cart



Pool Party 3/8" (1 Cm) Grosgrain Ribbon - 160430

Price: \$8.00

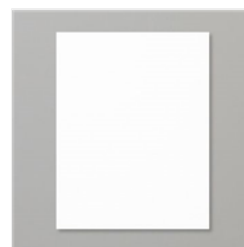
Add to Cart



Basic White 8-1/2" X 11" Thick Cardstock - 159229

Price: \$8.75

Add to Cart



Basic White 8-1/2" X 11" Cardstock - 159276

Price: \$10.25

Add to Cart



Calypso Coral 8-1/2" X 11" Cardstock - 122925

Price: \$9.25

Add to Cart



Stampin' Cut & Emboss Machine - 149653

Price: \$125.00

Add to Cart



Mini Stampin' Cut & Emboss Machine - 150673

Price: \$63.00

Add to Cart



Stamparatus - 146276

Price: \$49.00

Add to Cart



Bone Folder - 102300

Price: \$7.00

Add to Cart



Stampin' Dimensionals - 104430

Price: \$4.25

Add to Cart

Making a Statement with the Stampin' Up! Fancy Flora Suite

Mary Fish

maryfish@stampinpretty.com

<http://stampinpretty.com>



Multipurpose
Liquid Glue -
110755

Price: \$4.00

Add to Cart



Paper Snips
Scissors - 103579

Price: \$11.00

Add to Cart



Paper Trimmer -
152392

Price: \$25.00

Add to Cart



Basic White
Medium Envelopes
- 159236

Price: \$7.50

Add to Cart