

I'm Crushin' on Stampin' Up! Ready to Ride Designer Paper

Mary Fish
maryfish@stampinpretty.com
<http://stampinpretty.com>



CUT YOUR CARD STOCK - DIMENSIONS:

- Basic Gray Card Stock:
Card Base – 4 1/4 x 11, scored at 5 1/2
- Very Vanilla Card Stock:
Layers – 4 1/8 x 5 3/8, 3 3/8 x 4 3/8
Sentiment Layer – 2 3/4 x 3/4 (before cropping)
- Basic Black Card Stock:
Layers – 4 x 5 1/4, 3 1/4 x 4 1/4
- Ready to Ride Specialty DSP:
Layers – 3 3/4 x 5, 3 x 4
Envelope Flap – 5 3/4 x 2 1/4

I'm Crushin' on Stampin' Up! Ready to Ride Designer Paper

Mary Fish
maryfish@stampinpretty.com
<http://stampinpretty.com>



1. Begin by burnishing the fold of the card base with a Bone Folder.
2. Layer and adhere the larger three layers (Ready to Ride, Basic Black, Very Vanilla) together with Multipurpose Liquid Glue and to the card with Stampin' Dimensionals.
3. Adhere the smaller Basic Black and Very Vanilla layers together with Multipurpose Liquid Glue.
4. Adhere the Ready to Ride DSP layer with Stampin' Dimensionals.
5. Wrap all three pieces with black Baker's Twine Essentials, securing with a bow.
6. Adhere to the card with Stampin' Dimensionals.
7. Rub the Very Vanilla with an Embossing Buddy (Embossing Additions Tool Kit).
8. Use a [Stamparatus](#) to position and stamp the sentiment in Versamark Ink onto the Very Vanilla layer.
9. Cover with black Basics Embossing Powder. Tap to remove excess. Set with a Heat Tool.
10. Adhere as shown with Stampin' Dimensionals.
11. **POP OF PERSONALITY!** Embellish with three black Classic Matte Dots.
12. **PERFECT POLISH!** Use Multipurpose Liquid Glue to adhere the Designer Series Paper to the outside flap of a Very Vanilla Medium Envelope. You can see my video demonstration with tips on adding designer paper to an envelope flap [here](#).

I'm Crushin' on Stampin' Up! Ready to Ride Designer Paper

Mary Fish

maryfish@stampinpretty.com

<http://stampinpretty.com>

Mary Fish

Independent
Stampin' UP! Demonstrator

click for blog post

click to shop

I'm Crushin' on Stampin' Up! Ready to Ride Designer Paper

Mary Fish

maryfish@stampinpretty.com

<http://stampinpretty.com>



Happy Labels
Bundle (English) -
162384

Price: \$43.00

Add to Cart



Ready To Ride 12"
X 12" (30.5 X 30.5
Cm) Specialty
Designer Series
Paper - 160752

Price: \$15.00

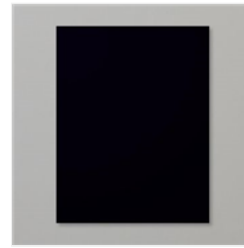
Add to Cart



Basic Gray 8-1/2"
X 11" Cardstock -
121044

Price: \$9.25

Add to Cart



Basic Black 8-1/2"
X 11" Cardstock -
121045

Price: \$9.25

Add to Cart



Very Vanilla 8-1/2"
X 11" Thick
Cardstock -
144237

Price: \$8.75

Add to Cart



Very Vanilla 8-1/2"
X 11" Cardstock -
101650

Price: \$10.25

Add to Cart



Multipurpose
Liquid Glue -
110755

Price: \$4.00

Add to Cart



Paper Trimmer -
152392

Price: \$25.00

Add to Cart



Stamparatus -
146276

Price: \$49.00

Add to Cart



Bone Folder -
102300

Price: \$7.00

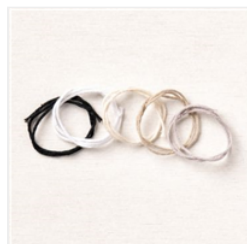
Add to Cart



Stampin'
Dimensionals -
104430

Price: \$4.25

Add to Cart



Baker's Twine
Essentials Pack -
155475

Price: \$11.00

Add to Cart



Embossing
Additions Tool Kit -
159971

Price: \$27.00

Add to Cart



VersaMark Pad -
102283

Price: \$9.50

Add to Cart



Basics Embossing
Powders - 155554

Price: \$18.00

Add to Cart

I'm Crushin' on Stampin' Up! Ready to Ride Designer Paper

Mary Fish

maryfish@stampinpretty.com

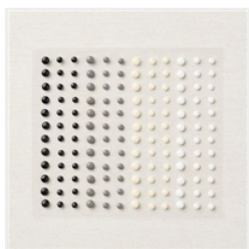
<http://stampinpretty.com>



Heat Tool - 129053

Price: \$30.00

Add to Cart



Classic Matte Dots
- 158146

Price: \$7.00

Add to Cart



Very Vanilla
Medium Envelopes
- 107300

Price: \$7.50

Add to Cart