

Hello, Irresistible Suite Collection...Ooh-La-La!

Mary Fish
maryfish@stampinpretty.com
<http://stampinpretty.com>


stampin' pretty
step-by-step tutorial



CUT YOUR CARD STOCK - DIMENSIONS:

- Basic White Thick Card Stock:
Card Base – 4 1/4 x 11, scored at 5 1/2
- Basic White Card Stock:
Layer – 3 3/4 x 5
Die-Cut – 4 x 5 1/4 – Adhered to an Adhesive Sheet (before die-cutting)
- Hello, Irresistible Designer Series Paper:
Layer – 1 1/4 x 4 5
Die-cut Leaves – 2 1/2 x 2 (before die-cutting)
Stamped & Die-Cut Flower – 2 1/2 x 2 (before die-cutting)
Envelope Flap – 5 3/4 x 2 1/4

Hello, Irresistible Suite Collection...Ooh-La-La!

Mary Fish
maryfish@stampinpretty.com
<http://stampinpretty.com>



1. Begin by burnishing the fold of the card base with a Bone Folder.
2. Use a [Stamparatus](#) to stamp the sentiment in Soft Succulent Classic Ink onto the Basic White layer as shown.
3. Layer and adhere the Designer Series Paper and Basic White layer together with Stampin' Seal and to the card with Stampin' Dimensionals.
4. Crop the Basic White layer with a [Stampin' Cut & Emboss Machine](#) (Standard or Mini) and the Irresistible Blooms dies.
5. Remove the protective backing from the die-cut and adhere to the Designer Series Paper strip as shown.
6. Use a [Stamparatus](#) to stamp the floral image in Versamark Ink onto a piece of Hello, Irresistible Designer Series Paper that has been rubbed with an Embossing Buddy (Embossing Additions Took Kit).
7. Cover with white Basics Embossing Powder. Tap to remove excess. Set with a Heat Tool.
8. Crop the image and leaves (DSP) with a [Stampin' Cut & Emboss Machine](#) (Standard or Mini) and the coordinating Irresistible Blooms dies.
9. Adhere as shown with Stampin' Dimensionals.
10. **POP OF PERSONALITY!** Embellish with Soft Succulent 2021-2023 In Color Opal Rounds.
11. **PERFECT POLISH!** Use Multipurpose Liquid Glue to adhere the Designer Series Paper to the outside flap of a Basic White Medium Envelope. You can see my video demonstration with tips on adding designer paper to an envelope flap [here](#).

Hello, Irresistible Suite Collection...Ooh-La-La!

Mary Fish
maryfish@stampinpretty.com
<http://stampinpretty.com>

Mary Fish
Independent
Stampin' UP! Demonstrator

click for blog post

click to shop

Hello, Irresistible Suite Collection...Ooh-La-La!

Mary Fish
maryfish@stampinpretty.com
<http://stampinpretty.com>



Bone Folder -
102300

Price: \$7.00

Add to Cart



Paper Trimmer -
152392

Price: \$25.00

Add to Cart



Stamparatus -
146276

Price: \$49.00

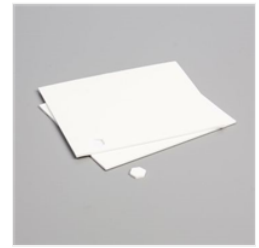
Add to Cart



Soft Succulent
Classic Stampin'
Pad - 155778

Price: \$8.00

Add to Cart



Stampin'
Dimensionals -
104430

Price: \$4.25

Add to Cart



Stampin' Seal -
152813

Price: \$8.00

Add to Cart



VersaMark Pad -
102283

Price: \$9.50

Add to Cart



Basics Embossing
Powders - 155554

Price: \$18.00

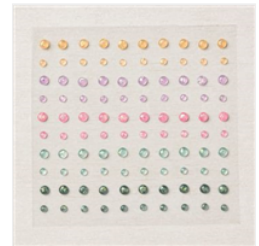
Add to Cart



Heat Tool - 129053

Price: \$30.00

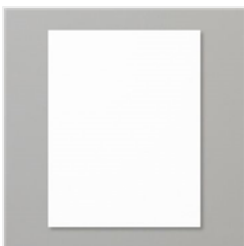
Add to Cart



2021-2023 In Color
Opal Rounds -
159185

Price: \$8.50

Add to Cart



Basic White 8-1/2"
X 11" Thick
Cardstock -
159229

Price: \$8.75

Add to Cart



Basic White 8-1/2"
X 11" Cardstock -
159276

Price: \$10.25

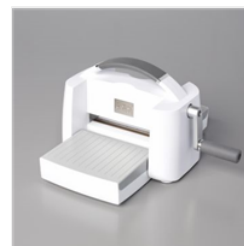
Add to Cart



Mini Stampin' Cut
& Emboss
Machine - 150673

Price: \$63.00

Add to Cart



Stampin' Cut &
Emboss Machine -
149653

Price: \$125.00

Add to Cart



Basic White
Medium Envelopes
- 159236

Price: \$7.50

Add to Cart

Hello, Irresistible Suite Collection...Ooh-La-La!

Mary Fish
maryfish@stampinpretty.com
<http://stampinpretty.com>



Adhesive Sheets -
152334

Price: \$11.00

Add to Cart